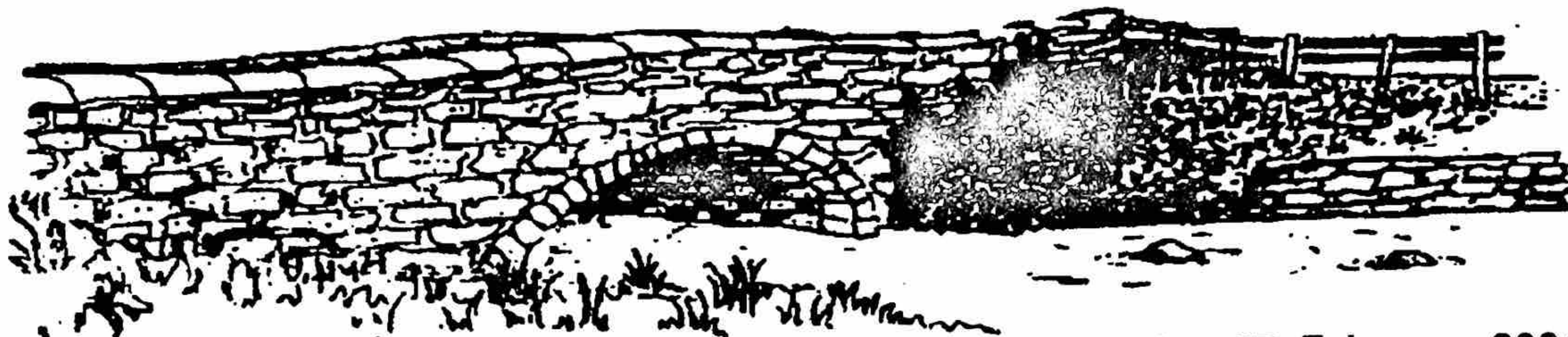


# CLAPHAM & DISTRICT NEWSLETTER



Number 27, February, 2004

## THE WAY FORWARD FOR CRAVEN

Many households will have received a copy of the above named booklet. It sets out suggestions for the future of health care in the Craven area. Following is a brief summary of the proposals.

\* \* \*

Welcome to this short summary of a public consultation document we have produced looking at options for the future of the way health and social care is provided right across Craven. These are being considered for a three month period lasting from 22nd December, 2003 to 22nd March, 2004.

This is an issue of great concern and interest to the population of the locality and we want to engage in a wide debate so we have a complete understanding of the views of as many local residents as possible.

As a Primary Care Trust we are responsible for controlling health spending locally, and believe that our residents should, wherever possible, have access to many basic services close to their homes. In Craven we feel that by looking again at what provision is currently on offer and in what location we can arrive at a solution which better meets local needs.

Of course, services cannot be reshaped regardless of cost. Our aim is to work with the community to develop a range of truly accessible and affordable services which meet the needs of Craven people for the foreseeable future.

A detailed document giving much more background to Craven and the different options we want to consider is available widely across the district. If you are unable to find a copy you can request one by ringing Gerri Burroughs 01423 815150, or download a copy from the PCT website, [www.chrd-pct.nhs.uk](http://www.chrd-pct.nhs.uk)

A variety of meetings, both formal and informal,

will be held right across Craven between now and the end of March, and we want people to get involved and tell us their views. More details on the venues will be advertised in your local newspapers.

The options for both South Craven (centred on Skipton) and North Craven (centred on Settle) are briefly summarised in this leaflet. Your views count, so please take the time to fill in the response slip and return it to us at our freepost address, or write a separate letter if you prefer. We look forward to hearing from you or seeing you at a public meeting in Craven.

### Tell us your views

Let us know your preferred option for the future shape of health services in the Craven area.

#### NORTH CRAVEN

- ☐ **Option B1**  
Retain all existing services as currently provided.
- ☐ **Option B2**  
Co-locate a range of primary, community and intermediate care services on one site. These would include the services of currently provided at Castleberg Hospital, Settle Health Centre and the GP practice.

If you do not receive a leaflet, you can cut out the above and post to:

FREEPOST NEA 16164  
Penny Jones, Chief Executive  
Craven, Harrogate & Rural District PCT  
The Hamlet, Hornbeam Park  
Harrogate HG2 8RE

**A Public Meeting will be held at the Village Hall on Wednesday, 3rd March at 7.30 p.m. to discuss the proposed health care changes. Your views count!**



# PARISH COUNCIL MEETING – 20 JANUARY 2004 (SUMMARY REPORT)

A proposed re-organisation of primary and community health/social care services in Craven was drawn to the attention of the meeting. The Parish Council had already been consulted about the Primary Care Trust's (PCT) proposals which, if approved, would have a major effect on the provision of local medical services. It was suggested that the PCT should be asked to attend a public (evening) meeting in Clapham to give local people an opportunity to express their views on what is being proposed. This would be in addition to the PCT's own public consultation meeting, already arranged for February 18th in Skipton Town Hall.

Several people stated objections to the proposed conversion of the Flying Horseshoe Hotel into eight apartments. The Parish Council also objects to the proposal, primarily on grounds of loss of amenity, loss of an employment site, harm to the wider local economy, and over-development of the area around Clapham station. The Planning Authority will be notified accordingly.

Craven District Council had received an application for a Certificate of Lawfulness, which would allow a site warden's caravan to remain on land adjacent to the Flying Horseshoe Hotel, where it now stands without planning permission. Parish Councillors felt quite certain that a warden's caravan had been on the site for more than ten years, and agreed that the planning authority should be informed of this.

In December, a public meeting in the Village Hall had been called by the Parish Council to discuss the proposal to build 23 houses on the former H L Gomer garage site in Clapham. About fifty people had attended and the overwhelming majority of those present clearly objected to this particular scheme.

Since that meeting, the scheme for 23 houses appears to have been withdrawn, at least for the time being. It is understood that the applicant is now simply seeking approval for a change of use, in order to establish in principle that the site could be used for housing instead of for employment purposes.

The Parish Council has been informed that a formal Breach of Conditions Notice had been issued by Craven District Council in respect of the caravan repair business in Newby. This notice requires the site operators to comply with the conditions imposed on the grant of planning permission, or to face legal sanctions should they fail to do so within thirty days.

Councillors approved a draft letter to David Curry MP, suggesting that local authorities should have more effective powers to remove permanently caravans or temporary buildings being used as dwellings in defiance of local planning policy.

Local demand for some kind of high speed access to the internet appears to be increasing. BT say they might consider upgrading the local telephone exchange to make broadband available provided that 150 local internet users express an interest in applying for the service. However, in Austwick, where a campaign for high-speed internet access has been running for some time, there is some scepticism about BT's willingness to make broadband available in rural areas at all, because the number of potential subscribers would be relatively small. There are also concerns about the cost of subscribing to broadband services in rural areas. For these reasons, the Austwick campaigners are looking at an alternative technical solution involving a satellite link via a small aerial attached to each subscriber's house. It was agreed that the clerk should make further tentative enquiries about BT broadband, and the emerging



**Fisher  
Wrathall**

**ESTATE AGENTS  
CHARTERED VALUATION SURVEYORS**

*We provide advice on all types of property transactions including the sale of rural properties and the development of Land and Buildings*

Lancaster (01524) 68822  
Morecambe (01524) 417272  
[www.fisherwrathall.co.uk](http://www.fisherwrathall.co.uk)  
e-mail: [property@fisherwrathall.co.uk](mailto:property@fisherwrathall.co.uk)  
The Old Warehouse, Castle Hill, Lancaster  
17 Princes Crescent, Morecambe

## Thomas Redhead

*Clapham's Solid Fuel & LPG gas supplier*  
supports British coal

**Six grades & sizes of coal**  
from £5.00 per 50kg bag – including V.A.T.

**20 different smokeless fuels**  
from £6.00 per 50kg bag – including V.A.T.

**Bottled gas delivered to your door**

QUALITY, RELIABILITY & CHOICE

Top up service available

**015242 41626 or 41212**



Austwick scheme, and report back to the next meeting.

In February, NYCC expect to carry out ditching work alongside local highways to reduce the possibility of flooding. This will include (i) the minor road on Newby Moor opposite the Little Chef; (ii) the Clapham to Ingleton road near Bleak Bank Farm; (iii) the lower end of Newby village; and (iv) the Keasden road below the cross-roads.

At about the same time, NYCC are proposing to carry out work to stabilise the edges of the Keasden road, and to rectify the more serious defects on the highway itself. Later in the year, they hope to re-surface the entire length of road between Clapham Station and the cross-roads.

Work to tidy up the disused section of the old A65 has still not been done, and quite a lot of rubbish remains there. NYCC have again been asked to get this cleared away. Meanwhile, the Parish Council had received a complaint about the dumping there of a large pile of used farm straw. The Parish Council expects this to be removed promptly once adjacent fields are dry enough to allow spreading.

NYCC have been reminded that work needs to be carried out on the old road, as previously agreed, before the next influx of 'travellers' begins in the spring. The proposal to apply a Traffic Regulation Order to the site also needs to be addressed quickly or it will be too late to be effective this year.

It was suggested that when turning into Newby village at night from the A65, the alignment of the junction is not always easy to see in the darkness. NYCC Highways will be asked to consider installing reflective posts at the junction.

A suggested 20mph speed limit for Clapham village will be considered at the Parish Council's next meeting.

A report in the Craven Herald seemed to indicate that the District Council are taking a very hard line over gravestones deemed to be unstable. In cemeteries for which they are responsible, very many

stones have been laid flat recently. Evidently, this is to avoid any possibility of litigation should the stones fall over and cause injury. This begs the question of whether similar action should be taken in Clapham churchyard, for which the Parish Council is responsible. There was no support whatever for this. On the contrary, it was clear that any such suggestion would be vigorously opposed. All the gravestones had been checked recently and there was no evidence of any being in an unstable or dangerous condition. Regular checks will be carried out in future, at approximately six-monthly intervals. A notice is already displayed at the church gate reminding people that the churchyard is not a playground, and that their children should not be playing there.

Some years ago, the Parish Council expressed interest in a project which (at the time) the National Park Authority was hoping to develop to encourage the recycling of agricultural plastics, especially used silage wrap. Although nothing seems to have come of this project in our area, it was agreed that the possibility of setting up a small-scale local scheme might now be worth investigating. Some local farmers have already made their own arrangements with recycling contractors, and it may be possible to use these established contacts as the basis for a wider scheme supported by the Parish Council. Grant money may be available from various sources to cover the cost of purchasing re-cycling bins (about £200 each) and liners, with the farmer paying only the collection costs. Informal enquiries will be made to see whether there is any interest in such a scheme.

The Clapham Development Association had written to the Parish Council asking for a financial contribution to the cost of making up three distribution boxes in which Clapham visitor leaflets could be placed at key points in the village. The total estimated cost was expected to be about £150. The Parish Council had agreed previously to contribute to the cost of producing the leaflets themselves. However, it seems that these costs have now been

## BROCKLANDS Woodland Burial

Environmentally-friendly burials  
open to people of all faiths

\* \* \*  
Each grave has a tree planted on it

\* \* \*  
Peaceful and secluded setting

\* \* \*  
Ask for a leaflet or come and visit

**Julia and Chris Weston, Rathmell**

Tel: 01729 840102

[www.brocklands.co.uk](http://www.brocklands.co.uk)



## Newsholme & Son

(Established 1950)

*Electrical Engineers*

**STATION ROAD, CLAPHAM**  
**Write or phone 015242 51383**

Domestic • Agricultural Installations • Security  
Lighting and Burglar Alarms • Fire Alarm  
Systems • Additional Electrical Circuits •  
Faults • Breakdowns • Cooker and Night Store  
Heater Repairs.

**No call-out charges, No VAT, Free estimates**



## **Parish Council Report – continued**

covered by external grants, so it was agreed instead to pay one half of the cost of making up the leaflet boxes, up to a maximum of £75.

### **Planning applications approved since the last meeting:**

- Conversion of barn to workspace/ancillary living accommodation, Burn Head Farm, Mewith.
- Conversion of barn to residential accommodation, Bracken Garth Barn, Keasden.
- Extension to bungalow, plus the erection of stable block and garage: The Heigh, Mewith.

### **Planning applications refused since the last meeting:**

- Two storey rear extension, Chapel House, Newby.
- Conversion of barn to workspace/ancillary living accommodation, Greenhill barn, Oaklands, Bentham.

### **Planning applications still awaiting decision:**

- New dwelling at Croft House, Newby.
- Retention of timber kitchen and classroom, also toilets – land at Burn Head Farm, Mewith.
- Retrospective change of use to campsite – land at Burn Head Farm, Mewith.
- Conversion of outbuilding, extension and double garage: Lythe Birks, Keasden.
- Change of use: Public House/Hotel to eight apartments, Flying Horseshoe Hotel.
- Siting of static caravan (for site manager) adjacent to Flying Horseshoe Hotel.
- Construction of Network Rail communications mast beside railway line near Clapham Station.
- Outline application for the erection of residential dwellings and the layout of public open space on the former Mercedes Benz (H L Gorner) garage site – Old Road, Clapham.

**Next meetings:** The next meetings of the Parish Council will be held on Tuesday, March 23 and on Tuesday, May 18. Both meetings will start at 7.30pm and will be held in the Village Hall.

**Linda & John**

welcome you to

### **CLAPHAM VILLAGE STORE & POST OFFICE**

Monday – Friday . . . . . 0700–1800  
Saturday . . . . . 0730–1700  
Sunday . . . . . 0800–1300

#### **Post Office Hours:**

Monday – Friday . . . . . 0900–1730  
Saturday . . . . . 0900–1230

**Telephone: 015242 51212**

## **Age Concern Coffee Club**

### **4th February**

Meeting in the Village Hall 10.00 am – 12 noon  
*Speaker:* Lindy & Tony Wilmont  
Experience of Fostering”

### **12th February**

Trip to Damart at Bingley and  
Salt’s Mill, Saltaire  
Meet 10.00 am outside Village Hall

### **3rd March**

Meeting in the Village Hall 10.00 am – 12 noon  
*Speaker and Performer:* Edward Lawson  
“Travels with my oboe”

### **11th March**

Trip to Stephen Smith’s Garden Centre, Otley  
Coffee at Booth’s, Ilkley  
Meet 10.00 am outside Village Hall

## **We are inviting ourselves to your party!**

Combine the pleasure of a party and enjoyment of learning. You will avoid both hangovers and boredom!

Do you have a group of friends who you would like to see more often? Or do you fancy getting to know people from your community better, or perhaps a bit of both? Then why not inspire each other to learn something new.

Have a learning party. All you need is a place to meet and a group of interested people. Decide what you are all interested in learning and we will arrange the rest.

If you are curious about this, then phone us to talk about what you might do.

Call Community Education on  
01729 823312

## ***‘Heavenly Hands’***

**Reika healing and  
herbal health care**

Tel. GILLIAN on  
**015242 62608**

*I will be happy to be of service*



## Happy New Year!

So what are you going to do with yourself in 2004? Try a bit of I.A.G.!

North Craven's **I**nformation, **A**dvice and **G**uidance service is here to help you take stock of your skills and experience. Take some time to consider your current situation – do you want to make any changes to:

- Your current work?
- Find new work?
- To help you get back to work after an absence
- To help you at home
- For any other reason that you can think of!

You may have some idea of what you would like to do or maybe you know that you would like to do *something* but can't think what! Whatever your state of thinking is – talk to us! Contact us for an informal chat or for more specific help and support.

Telephone Joy Waddington on: 01729 823312

Email: joywaddington@hotmail.com

## School PTA Christmas Fair

Saturday, 6th December saw Clapham school buzzing with the excitement of the annual Christmas Fair. The event was organised and run by the PTA but its success is down to the continued support of our many friends and supporters. Our thanks to everyone who donated, created, baked, sewed, licked and stuck wonderful items to sell . . . and then came along on the day and bought them all up! Top stall was the Home-made Produce stall, closely followed by the Craft stall, the Children's Christmas Cake stall and the Raffle.

The refreshment tables were kept busy all morning and everyone visiting had the opportunity to view the new Computer Suite and sign-up for courses with Learning Direct.

Santa even took time out of his busy schedule to visit his grotto in the school with gifts for the children.

You will be pleased to know that all the hard work raised over £800 (including the second raffle at the children's performance), which is a fantastic effort and is a reflection of the much appreciated support and generosity of our community.

Thank you

## WHIST DRIVES

Whist Drives will be held in Clapham Village Hall at 7.30 pm on the following dates:

February: 13th 20th (semi-partner) and 27th

March: 12th 19th (rainbow whist) and 26th

April: 9th

Proceeds from all whist drives go into the charity fund. Aggregate winner from the previous twelve whist drives was M. Willock.

## FREE ONE HOUR TASTERS

Is there something you've always wanted to learn, but you've never known where to start? A new campaign of free, one hour Bite Size Intros could be just the first step you need.

Running across North Yorkshire from 19 January to the end of May 2004, there are Bite Size topics on using a computer for the first time, putting digital photos onto a computer, shopping on the Internet, learning a language, learning to relax and practising your job interview skills. There are also Intros on helping your pet to lose weight, making greetings cards and hundreds more topics!

If you've an hour to spare and there's something you've always fancied doing then call free on 0800 515 547 or go to the website [www.ynybitesize.co.uk](http://www.ynybitesize.co.uk) to find out what's on in your area. They are running in all kinds of venues from community centres to pubs.

Bite Size is run by the Learning and Skills Council North Yorkshire, supported by local training organisations, voluntary organisations and employers. If you didn't enjoy school, or you're keen to try something new, then Bite Size Intros could give you the confidence to go on to learn more.

## Clapham Tennis Club

Despite the club previously running a series of coaching classes for all age groups, by a Lawn Tennis Association qualified coach, the 2003 season was disappointing as only two families, two adults and six juniors took out membership of the club.

As some serving members of the club have left the village, a meeting will be held on **Wednesday, 25th February** at 7.30 pm in the Supper Room of Clapham Village Hall to discuss the future running of the club.

## HARRISON & CROSS LTD.

ELECTRICAL & REFRIGERATION ENGINEERS

Our electrical retail shop is now open for:  
Chest freezers, Upright freezers, Larder fridges,  
Washing machines, Tumble dryers, Dish washers  
and Microwaves.

We are NICEIC approved Electrical Contractors

We do partial or complete rewires, electrical checks  
on existing installations.

Phone/Fax: 01729 823423

Unit 6, Sidings Industrial Estate, Settle

Free delivery up to 20 miles.



# If you bank here



Alliance  
Leicester  
*a real plus*

**BARCLAYS**



Lloyds TSB

## you can withdraw cash here free



All you need is your card\* and your PIN.

With our new automated banking service you can now withdraw money from your bank account absolutely free at the counter of your local Post Office® branch.

**Clapham Village Store  
& Post Office**

Telephone 015242 51212



## Clapham Women's Institute

Clapham Women's Institute meets on the second Wednesday of each month at 7.30 pm in the Village Hall. The group includes members from Eldroth, Keasden and Newby. New members, visitors and friends are always welcome. For more information telephone Jean Davey 015242 51321.

### Programme:

**February 11th:** *Cuba Libre – travel, humour and anecdotes from a trip to Cuba.*

Speaker: Ms Sue Mann

**March 10th:** *Woodland Industries – history of woodland management and uses of wood.*

Speaker: Mr. Michael Goth

## Seat of Remembrance

Many of you may have seen a newly erected seat on the stretch of grass on the beck side, opposite Deighton House. This seat was given by the Rotary Club of Lunesdale in remembrance of Stephen Mallaband who was an active member of the Club for seventeen years and was its President in 1994/95. Stephen certainly applied the Rotary ideal of service to his personal, business and community life. Lunesdale played an important part in Stephen's life, especially during the last three years. He tried to attend meetings even when he was very ill, and the friendship and company on those Thursday evenings brought him great happiness.

Much discussion took place about a suitable and fitting site and, with Dr Farrer's approval, it was decided the beck side opposite the Mallaband home was an ideal spot. Stephen stayed in Deighton House as a child when holidaying at the Brewin's. It was a strange coincidence that we moved into the same house in 1978.

The family would like to see the seat being used by villagers, visitors and tourists. It is extremely peaceful and relaxing on this piece of land. It is an ideal spot to sit and reminisce, to take in the beauty and peacefulness of Clapham.

Jean Mallaband

## Jumpers for Belarussians

I would like to thank all the people who donated odd balls of wool, used for knitting jumpers for the Belarussian children. Currently there are four of us knitting and we already have a few jumpers ready. We still need more wool, most of the jumpers are striped, so any oddments will be welcome.

Rosie (51492)

## Bethel Chapel

Sunday Services 11.00 a.m. and 6.30 p.m.

Tuesday – Bible Study

Wednesday – 429 Club – 6.00 p.m.

Thursday – Senior Citizens – 2.30 p.m.

(1st Thursday in month)

Ladies Meeting – 2.00 p.m.

(3rd Thursday in month)

Coffee Evenings – 7.30 p.m.

(4th Thursday in month)

Friday – Clapham Tots 9.45 to 11.15 a.m.

Youth Club (10–14 yrs) 7.30 p.m.

Everyone welcome

Enquiries: Clapham 51363

## Village News

Shaun and Joanna Walton of Masons Cottage are now the proud parents of Cara Mae.

By the time we go to press Pat and Ian Briggs will have left Clapham. We shall miss them, but wish them well in their new home in Addingham.

We send our sympathy and best wishes to Paul and Mason Sellers who had come to live in the village a few weeks before Christmas. Victoria died suddenly on 17th December.

We welcome Simon and Sue Lattimer with Megan and Nathan who have come to live in Rose Dene, Riverside.

## Jazz in Spring ! !

After a highly successful night in 2003, Sue Parish & Duo have agreed to give us a 'repeat performance' on 6th March at 7.30 p.m. in the Village Hall. Tickets at £7 include supper. There will be a licensed bar.

Proceeds will go towards the Church Restoration Fund

Tickets will be on sale at the Village Shop and from J. Farrer 015242 51302 or S. Mann 015242 51792

 **Arbutus**  
Country  
Guest House



offer a discount to Friends  
and Relations of locals  
*See Jackie or David for details*

**RIVERSIDE, CLAPHAM**

**Tel: 015242 51240**



# THE HISTORY OF BRIDGE COTTAGE, CLAPHAM . . . .

It is never easy to identify village houses with a view to finding their history, and Bridge Cottage is no exception. Its appearance suggests that it was built in the 18th century, although the rather curious feature of a centre wall which is solid enough for an outside wall suggests that the present building probably had a predecessor of some sort. There seems to be no indication as to which side of this thick wall an older building might have stood. The very large cellars would appear to be 18th century and to have an association with copious storage of some sort. There is no identifiable old hearth or chimney, centre piece of so many old houses. At one end there is a building with a barn door (which has recently been converted into a separate dwelling) but the wrong shape for a barn. Its 19th century use was as a workshop and that is what it looks like, so probably this was always a house with a commercial intention. Inside it has good re-used beams which are a normal feature of houses in this area where timber was not too prolific and good wood was used and re-used. A small old window in the gable end indicates that the building was always three-storeyed, with an attic that was used.

Everything points, then, to an 18th century house built on an older site. But it has none of the space round it that one would associate with a village yeoman's house, and it is moreover, very near the river bank, nearer than buildings on any of the other three corners of the bridge. My own guess is that the older building was associated with the much larger and more prestigious property next door, which at some time (one does not know for how long) was an inn called the '*Bull and Cave*', and that at some time in the 18th century this was redeveloped as a house, probably from the beginning as a house with a commercial bias, possibly always a shop at one end and a workshop at the other. The idea of the

commercial bias is underlined by the fact that so far as is discoverable, the house was never lived in by its owner, always by a tenant. There is one more oddity: the house stands between two public roads for no reason that is apparent.

I have not managed to track the history back into the 18th century, although more research might get further. In 1800 it was the property of a wealthy gentleman of Hole House in Dent, called Roger Hodgson.

Roger Hodgson made his will in 1800 and died in 1812. He was a widower with one daughter, an unfortunate daughter as the will makes clear. He left handsome legacies of £500 each to several relations, but one niece and nephew, Richard and Isabella Holme (unmarried brother and sister) were closer and indeed probably lived with him. As Mr Hodgson's personal property, without the real estate, was sworn at £9000, clearly their service to him and his daughter would be well rewarded. In 1829 the Clapham property was sold on behalf of Isabel, still a spinster, still living at Hole House. It would seem that her brother too had died and she was the sole inheritor.

The buyer: William Stackhouse came of a long-established family round about Giggleswick, and one branch had long settled at Lawkland Green where they were quite considerable yeomen.

From 1807 to 1831 he was the 'writing master' at Giggleswick School. The school was going through a successful phase at the time.

William Stackhouse did not have to remain a schoolmaster all his life. In 1832 his elder brother Robert died, and he seems to have inherited Lawkland Green. William had married in 1816 and had two daughters, Agnes and Ann. Sadly Agnes died at the age of 13. She appears on her father's tombstone, a very handsome table tomb in Clapham churchyard. 'William Stackhouse Esquire' he is there called, died

## Local Food for Local People



GROWING WITH GRACE  
CLAPHAM NURSERIES . . . .

offers an extensive range of organic vegetable & fruit bags delivered to your door every week

Tel: Sue on 015242 51723

Come & visit our Organic Shop  
Over 2 acres of greenhouses  
growing organic produce

[www.growingwithgrace.co.uk](http://www.growingwithgrace.co.uk)

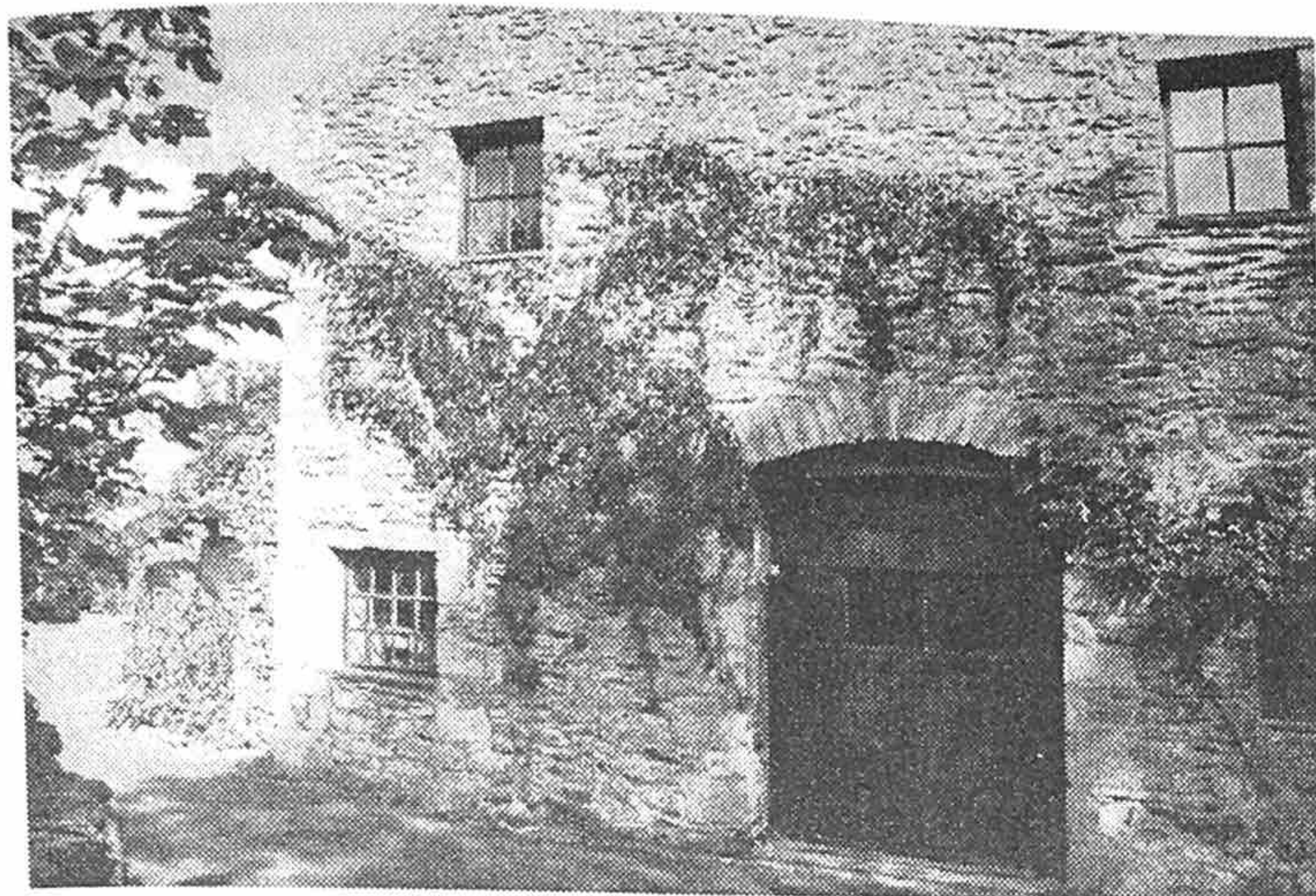
## Ruth A. Woodhouse \* Professional Florist \*

available for  
*Weddings, Funerals, Special  
Occasions and Demonstrations*

FOUNDRY COTTAGE  
FLYING HORSESHOE COTTAGES,  
CLAPHAM, via LANCASTER LA2 8ES

Telephone: 015242 51157





1842 at the age of 58. Ellen his wife outlived him by many years and died in 1869.

Meanwhile the second daughter Ann, who as the only child inherited her father's estate and was therefore quite an heiress, had married at Clapham in 1839 Christopher Other of Elm House Wensley. The Clapham property was sold in 1873 to James Farrer of Ingleborough and so incorporated into the Farrer estate while the Others continued to rise in their Yorkshire world and bought Coverham Abbey in Wensleydale.

So much for the owners. It is disappointing that there is no way of discovering the early tenants. Village houses had no names. It is sometimes possible to work out who lived where from the Land Tax returns (between 1780 and 1832) but in the case of Clapham these returns have disappeared. From 1841, the first to give details of inhabitants, we can follow the tenants of Bridge Cottage for the rest of the 19th century through the census returns.

In 1841 the tenant was Robert Wilcock, a grocer. He belonged to a Bentham family, where he was born in 1784, and had moved to Clapham certainly by 1825, as his son Richard was born there. His daughter Jane was born in Bentham in 1821.

In 1851 the family were still there, Richard 26 and his father quite an elderly man. By 1861 they had gone.

While the Wilcocks were at Bridge Cottage there is no indication as to how they might have used the workshop end of the building, but the next tenants undoubtedly did. In 1861 Richard Howson was described as 'joiner and grocer' a man of 34 with a wife and two young children. Women are rarely given credit for their work in the census, but we may presume that while Richard worked in the workshop, Mary Ann was the grocer. Richard's was quite a large establishment. Robert Howson aged 60 was a boarder, described as 'joiner journeyman', and there were also two 16-year-old apprentices living in.

The business flourished. In 1871 Richard was described as a joiner and builder employing 2 apprentices and 4 men. Only one lived in, but there were three Howson children, and the grocer's shop seems to have been temporarily in abeyance. At any rate it was not mentioned. It may have continued in too small a way to be worth mentioning, but it may have closed, as the old '*Bull and Cave*' next door was now a large shop run by Thomas Faraday, large enough to need a live-in 'shopman' as well as the owner to run it.

The Howsons continued in place and in business at least until 1891. In 1881 Richard still had an apprentice, but by 1891, now a man of 64, he lived alone with his daughter Maria. However, the business continued because two doors away was his son Robert, also described as a joiner, with wife and baby.

As unfortunately there are no deeds to the house, which would in all probability have covered the 20th century, the best way to fill the gap is by local information. One can usually depend on local memory to go back a hundred years, seventy of them by actual memory and the other thirty by hearsay.

*Emmeline Garnett, April 2002*

**AGE**  
*Concern*

**NORTH CRAVEN**

*Advice and information for  
older people and their carers*

**CHEAPSIDE, SETTLE BD24 9EW**

**Tel: 01729 823066**

**01729 825669**

Registered Charity number: 700054

**James, Jenifer, Michael & Anne are  
*Party Animals***

**PRIVATE PARTIES:**

Christenings, Birthdays, Weddings, Themed Parties and Funeral Teas, etc.

In your home, garden, village hall, marquee, barn, attic wherever . . .

**We can provide:** Decorations to Venue, Bar, Catering, Table Waiting and Washing up.

Telephone:

**015242 51877 or 015242 51404**



# FURTHER EDUCATION

## Craven College – Spring 2004

### Bentham & Ingleton

#### Distance, Open and Flexible learning

Distance, Open and Flexible learning has opened up many opportunities for people living in the rural areas, enabling them to study programmes not normally offered in more traditional ways in smaller or isolated communities.

Experienced and qualified tutors can provide guidance, support and tuition to rural based students on a number of programmes including;

GCSE's  
AS & A2 Levels  
Management Qualifications  
Travel Qualifications

If this sounds like the answer to your learning needs, please contact:

Anne or Sue at Millers Court, High Bentham,  
Tel: 015242 61474

### Courses at Millers Court, Bentham

Skills for the modern Office  
Digital Photography and Image Manipulation  
Introduction to Feltmaking techniques  
Introduction to Desktop Publishing  
Basic IT Skills  
AS Level Law  
Intermediate Certificate in Food Hygiene & Safety  
Sculpted Heads  
Upholstery  
Introduction to the Internet  
Basic IT Skills  
Intro to the Internet  
Intro to Digital Imaging  
Making Great Posters with MS Word  
Improve your English up to GCSE  
Move On Literacy  
Introduction to Word Processing  
Holiday French for Beginners  
First Aid Appointed Person  
Improve your Maths up to GCSE  
Move on Numeracy  
First Aid for Parents and People Working with Children  
Bronze Age in the Yorkshire Dales  
Dress to Impress  
Introduction to Graveyard Archaeology  
Iron Age in the Yorkshire Dales  
First Aid for Small Animals

### Rural Studies

A range of Rural and Countryside courses such as Dry Stone Walling, Hedge Laying, Fencing, Fly Fishing for Beginners, Chain Saw Handling, Motor Cycle Maintenance, First Aid for Animals, Spring Lambing and Lamb Care are available through Craven College and may be arranged locally. Please call 015242 61475 for more information.

### Free Computer Training for Voluntary & Community Organisations

Designed to meet the needs of terrified beginners or competent users; an extensive range of *FREE* IT courses is available to help you and your team make use of the modern technology now available.

Basic Computing, Desktop Publishing, Digital Imaging, Computerised Accounting, European Computer Driving Licence, Internet & e-mail, PowerPoint for Presentations, Spreadsheets & Databases and Website Design are just some of the courses on offer.

### Courses at Ingleborough Community Centre

Further Basic Skills Spreadsheets • European Computer Driving Licence • Intro to Desktop Publishing • Digital imaging • An Introduction to Child Minding Practice • Graveyard Archaeology • Old Inns of the Yorkshire Dales • Architecture of your Village

For more information on the above please call Anne or Sue on 015242 61474

### Community Education Spring Programme

Your Money or Your Life • Study Skills  
Iyengar Yoga • Hatha Yoga • Gardening  
Spanish Conversation Level 2  
Workshop for Spellors • Pottery • Sugarcraft  
Get Going • Computing for Beginners  
Intro Deep Relaxation • Deep Relaxation Developed  
Managing Farm Paperwork • Desktop Publishing  
Woodwork • Brush up on Your Maths  
A Changing Landscape • Life Schools Workshops  
Painting & Drawing • Paint as an Impressionist

To find out more about any of these courses contact John Collins 01729 823312



## CHURCH NEWS

Plans are going ahead for the induction of our new vicar Rev'd Ian Greenhalgh on 3rd April. Details for this service and services for Holy Week which follows immediately afterwards will be given nearer the time, but it has been decided that this year there will be no Easter breakfast in church and the service on Easter Day will be Holy Communion at 11.00 a.m. as usual.

Lent begins on Ash Wednesday, 25th February, when there will be Holy Communion at 7.30 p.m. celebrated by Canon David Creaser. On 29th February, a fifth Sunday in the month, the service is a united one at Clapham, 11.00 a.m.

The Annual General Meeting takes place in the school on Monday, 15th March at 7.00 p.m. After the short Vestry meeting at the beginning it affords opportunity for all parishioners to hear how the Church conducts its business, and hear the various reports that are given. There are people who give support in many ways to the church, but do not come to other meetings or many church services. This is a chance to thank them and listen to any comments and ideas they

may have and chat together over a cup of coffee.

Mothering Sunday is 21st March – a family service with posies for children to give to their mothers; 11.00 a.m.

The Craven Arts Council and other supporting bodies are planning a Festival of Magic, Myths and Legends in Clapham on 8th and 9th May and the hunt is on for volunteers with any time and skill to offer. Please contact David Kingsley 51240. The church proposes to hold an Exhibition of Angels. If anyone can help in any way please speak to Jean Claughton 51491.

### Booklet to celebrate the life of **John Dalby**

Stan Lawrence and Anne Read would like to thank most warmly everyone who has contributed to the booklet.

Copies will go on sale from mid-February at:  
Clapham Village Store  
Cross Leigh Store, Austwick and  
Austwick School.

---

## CLAPHAM DEVELOPMENT ASSOCIATION

OPEN MEETING – 7th January 2004

We are delighted to say that the promise of funding has now been confirmed and that the brochure is literally at the printer as we speak. The website will hopefully be laid out in a similar format to give information to visitors and other interested parties, but it will also have specific pages of local news, information and comments, so that local 'connected' people can check up on events etc.

We have been approached by the Clapham Park Association for some assistance and we have had lengthy discussions with the Yorkshire Dales National Park with regard to the future of the reading room, Snooker club and former Information Centre. Partly due to our intervention the sale has been held up and there is still a chance that a local use may be found to enable the centre to reopen.

We have been in touch with the Yorkshire Wildlife Trust and there is a project which should help to encourage wildlife and tidy up sections of the village.

The Clapham Festival came about after an introduction from Hazel Smith our facilitator from Craven council when the Yorkshire Dales National Park were deciding how to launch their 50th Anniversary Celebrations. The concept of a 'Magic, Myths & Legends' festival was their's, and we were approached as to whether we were interested in having it here in Clapham. As far as we are concerned

the whole idea frightened us, but we have been assured that a festival such as proposed can only bring good to the village. Hopefully it will help all the existing groups that are already meeting, pull together on one unified effort to attract quality activities and lots of fun for all members of the village. If we can follow the example of other villages like Kettlewell and Wray the event could bring in quite a lot of cash for village activities and or charities. This festival will be organised by a professional team of event people with the hope that in future years we can run it with our own volunteers. It will require help in numerous directions from as many people in the village that we can muster.

---

### **Festival of Magic, Myths and Legends**

Peter Huby has been given the job of coordinating the Clapham Festival of Magic, Myths and Legends which will take place over the weekend of May 8–9.

Peter was Head of Art at Settle High School from 1990-1997 and has been involved in a number of projects in Settle since then, including the Flag Festival.

His telephone number is 01729 840087 and his email address is: peterhuby@tinyworld.co.uk



## WILDLIFE IN CLAPHAM

Winter "specials" included ten Waxwing flying over Ingleborough Hall on November 11th, Snow Bunting heard by Jess Hart on Ingleborough in early December and one seen over the allotment on January 16th. One Brambling over the Flying Horseshoe (as was) December 19th compares with the big flocks there last year. Most interesting was a Yellow-browed Warbler seen three times over Christmas with a tit flock on the nature trail. At least one Chiff-chaff has spent the winter there as well. Other records include six Grey Partridge at Hardacre Moss December 19th, Goosander at Crina Bottom Farm December 28th and Kingfisher on the River Wenning January 10th. Spring starts early for some – Dipper are already singing in territories at the Show Cave, in Clapham village and near Calterder Bridge on Crook Beck. Three male Tawny Owl were calling between Clapham village and the station at dawn of January 16th, and Raven are already nesting near Austwick.

Butterflies may seem an age away but there was a Small Tortoiseshell in Smithy Cottage on January 1st – hibernating of course. We live in a particularly interesting area to observe climate change as we are right on the northern edge of so many butterflies' ranges. As it has got warmer over the last twenty years, with more rain in the winter rather than summer, many species have moved both north and higher in altitude. Terry Whittaker has done some fascinating research locally – as an example Small Skipper have been spreading north from Skipton at a steady 6km per year, and have now reached Ingleton. They will soon meet their cousins coming up the west coast who have just made it to Hornby! Orange Tip used to be confined to

the low meadows but are now breeding at over 300m up the hillsides. Further afield it has been reported from Sussex that a Red Admiral survived last winter – the first proven record.

Since we reported the return of Otter to our parish there have been a number of recordings – in early December Pete Evison saw three below Clapham School.

*Records supplied by Tim Hutchinson, Smithy Cottage.*

## Craven Conservation Group EVENTS CALENDAR 2004

**Sunday, 8th February, 10am**

**Tree Planting with English Nature** – Meet at Horton Station. All tools and work gloves will be provided and travel expenses will be paid. Please bring packed lunch and waterproofs and boots. New volunteers are always welcome but please ring John in advance to arrange insurance cover and health and safety details.

Contact John Osborne (Asst. Site Manager Craven Reserves) on 07967 971523 from 5pm

**Sunday, February 15th, 9am**

**Bird watching trip to Marshside, Southport** – With Gerald Light. Meet at Settle Swimming Pool to share transport. Please bring waterproofs, boots or waterproof shoes and a packed lunch.

Further details from Gerald 01756 753720.

**Thursday, February 26th, 7.30pm**

**The spread of deer locally in recent years** – At Linton Court Gallery, Duke Street, Settle.

Presentation by Bill Mitchell.

Members £1, non-members £2.

**Sunday, March 7th, 10am**

**Tree Planting with English Nature** – Meet at Leeds University Bungalow, off Alum Pot Lane.

Contact John Osborne on 07967 971 523 from 5pm

**Thursday, March 25th, 7.30pm**

**White Clawed Crayfish in Ribblesdale** – At Linton Court Gallery, Duke Street, Settle. Presentation and update on the status of the population by Paul Bradley.

Members £1, non-members £2.

**Sunday, April 4th, 10.15am Ingleborough Ramble** – Walk with John Osborne and Dave Tayler exploring the limestone scenery of Ribblesdale and Chapel-le-Dale Nature Reserves. Meet at Settle Swimming Pool to share transport at 9.30am or the Horton Station at 10.00am. Please bring waterproofs, boots and a Packed lunch. Contact John Osborne for details.

## MELDINGS SCALE

Locally produced  
**ORGANIC BEEF**  
delivered to your door  
or collect from the farm

**Tel: 015242 51345**

e-mail: meldingscale@hotmail.com

**ORGANICS**

This Free Newsletter aims to keep everyone in Clapham, Keasden and Newby in touch with what is happening in our community. It does, however, cost a not insignificant amount to produce, and advertising is a very necessary aid to the finances.

For Advertising your products and services, please contact Ray Hull on 015242 51492

Articles, News and Ideas PLEASE! for the next issue by **25th March, 2004** to the Village Shop, Chrissie Bell, Sylvia Haxell, Ray Hull or David Sharrod.

Articles submitted but not included in the present publication will be put in future newsletters.