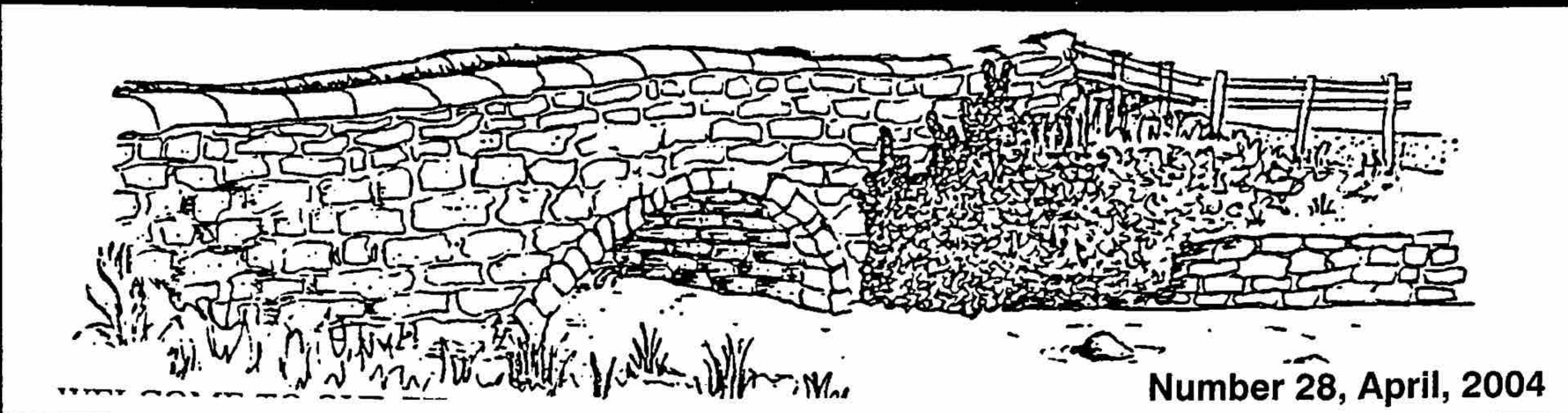


# CLAPHAM & DISTRICT NEWSLETTER



Number 28, April, 2004

## CLAPHAM FESTIVAL EDITION

By now we would be surprised if you are not aware that Clapham will be the venue for the first, 'Festival of Magic, Myths and Legends'! It will be taking place all over the village on the weekend of 8th and 9th May. There is an open community meeting at 7pm at Clapham Primary School on Thursday, 1st April to discuss progress – everyone is welcome, please come along.

This exciting new event is being held to celebrate the 50th anniversary of the Yorkshire Dales National Park and the rich, diverse and unique Dales cultural heritage.

The Dales has a great tradition of story telling that stretches back to Viking times and beyond. Many of our local place names relate to folklore such as Trow Gill, roughly translated from Norse and old English as 'troll's ravine' and Boggart's Roaring Holes refers to the Boggart, a shape-shifting mythical creature. The Dales are full of lost villages, faery dwellings, haunted woodlands, giants' hills, witches' caves and the green man. Perhaps this wealth of folklore was inspired by the stunning landscape that surrounds us? They are all an inherent part of local heritage and life. In fact you've probably already heard the story of Clapham's very own witch of Clapdale, Alice Kettyl!

The festival has an action-packed programme that will begin on Saturday morning with the new Vicar and his wife judging the home and business decoration competition. A cup will be presented to the winners. Residents and local business people can enter the competition by decorating the outside of their houses, gardens or shop fronts with home made boggarts, wood spirits, elves, hobs, faeries or whatever your imagination comes up with!

Then the proceedings will begin in earnest. The

weekend will be crammed full with:

- Street entertainers
- Street performances of a play about the Clapham witch
- Performances by local schools and youth groups including a puppet theatre.
- Bustling street stalls and craft demonstrations
- Historical reenactments
- International puppet convention
- Black cat village trail
- A giant luminarium (an amazing air supported temporary building)
- Themed food and drink and Black Sheep ale!

There will be lots of opportunities for everyone to get involved in hands-on workshops including dance and song, costume, lantern and bread making, circus skills and a junk gamelan (you'll have to come to find out what this is!), enchanting story-telling in the cave and a teepee. Musical entertainment will be

provided during the day and early evening by a selection of bands including samba, brass, blues, street bands.

Saturday will culminate in a fantastical lantern lit procession through the village and fire display. Then it'll all start again on Sunday! Visitors and residents are encouraged to get into the spirit of the event and to arrive in mystical fancy dress.

Proceeds raised by the festival will go to local community projects, charities and services. It is hoped that the festival will become an annual event and a highlight in the Dales calendar.

More information about the festival will be posted on the new village website at [www.claphamyorkshire.co.uk](http://www.claphamyorkshire.co.uk)

If you want to get involved call Paula Vickers on 01756 730403 or Peter Huby on 01729 840087





## PARISH COUNCIL MEETING – 23rd MARCH 2004 (SUMMARY REPORT)

It seems quite clear that to have any hope of bringing broadband – high speed internet access – to Clapham in the near future, a local campaign group must be set up now. The Parish Council is willing to support a campaign group, and perhaps help with funding, but it was agreed that the campaign itself must be led and driven by potential users within the local community. Volunteers are asked to come forward to get a broadband campaign started.

A public meeting was held recently in Clapham Village Hall to allow local people to hear about and comment on proposals to re-organise primary and community health and social care services in Craven. Three representatives from the Primary Care Trust (PCT) attended the meeting, at which nineteen local people were also present. The PCT promised that the views expressed would be taken into account in their decision-making process.

Local Police officers were praised for achieving the highest crime detection rate in North Yorkshire's Western Division. Councillors have been told that two additional constables are to be appointed, bringing up the combined strength of the local force (Ingleton/Settle) to fifteen. Police bicycle patrols may be tried locally once mandatory training procedures have been completed.

The Parish Council agreed to support a request from the organisers of the 'Clapham Festival of Magic, Myths and Legends' for the temporary closure of Riverside and Church Avenue over the two days of the festival early in May.

There was no support for a suggested 20mph traffic speed limit in Clapham. It was thought that any such limit would be almost impossible to enforce on the main roads through the village; and on the minor roads, traffic speed is probably self-limiting anyway because the roads are very narrow and are

made narrower still by the presence of parked vehicles.

NYCC have now applied for a temporary road closure order to allow them to carry out work to stabilise the edges of the Keasden road and patch it prior to 'top-dressing' the entire length between Clapham Station and the cross-roads. Some ditching work has already been done alongside the road, but more may need to be done to make this fully effective.

NYCC have confirmed that the Jack Beck road (Keasden) is still on a medium-priority gritting route, and has not been downgraded as was previously thought.

Work to tidy up the disused section of the old (A65) road has still not been done, and a lot of rubbish remains there. Craven District Council have again been asked to get this cleared away.

NYCC have been asked to provide better weather protection for the new bus shelter at Newby, the front of which is completely open to the prevailing wind and weather. NYCC will also be asked whether the seemingly-redundant shelter near Clapham Station should be removed, and the former lay-by there reinstated.

The Parish Council is concerned about the possibility of litigation in the event of an accident involving a collapsing gravestone in Clapham churchyard. Until now, the stability of the stones has been checked on behalf of the Parish Council by a local resident, but it has been suggested that a professional contractor should be employed instead. It is accepted that any such contractor would be likely to err on the safe side, and would probably recommend that stones should be laid flat even if the risk of their collapse was minimal. In such cases, the Parish Council may be compelled to accept the recommendation to avoid any difficulties over



**ESTATE AGENTS  
CHARTERED VALUATION SURVEYORS**

*We provide advice on all types of property transactions including the sale of rural properties and the development of Land and Buildings*

Lancaster (01524) 68822  
Morecambe (01524) 417272  
[www.fisherwrathall.co.uk](http://www.fisherwrathall.co.uk)  
e-mail: [property@fisherwrathall.co.uk](mailto:property@fisherwrathall.co.uk)  
The Old Warehouse, Castle Hill, Lancaster  
17 Princes Crescent, Morecambe

### **Thomas Redhead**

*Clapham's Solid Fuel & LPG gas supplier*  
supports British coal

**Six grades & sizes of coal**  
from £5.00 per 50kg bag – including V.A.T.

**20 different smokeless fuels**  
from £6.00 per 50kg bag – including V.A.T.

**Bottled gas delivered to your door**

**QUALITY, RELIABILITY & CHOICE**

Top up service available

**015242 41626 or 41212**



insurance. Nevertheless, Councillors feel that they now have little choice but to seek professional advice, and this will be obtained as soon as practicable.

The Ingleborough Estate has confirmed that work to clear weeds from the ginnel between the Village Hall and Riverside will be carried out this spring.

It was agreed that the ornamental fountain in Clapham should be professionally cleaned; and that the hole in the rear wall should be sealed up as it is no longer needed for access to the (redundant) stop-tap.

Information about the enforcement of ragwort control procedure has now been obtained from Defra, and is available from the Parish Council should any local resident wish to see it.

It seems that there is no demand to set up a project for the recycling of agricultural plastics, as most local farmers have already made their own arrangements.

### **Planning applications awaiting decision:**

- Part demolition of outhouse, conversion to porch, utility and toilet, Bull & Cave Farm, Clapham.
- Proposed conversion of barn to form single dwelling – Newby Hall Farm, Newby.
- Construction of silage clamp, Crina Bottom Farm, Clapham.
- Erection of steel-framed building for HGV maintenance, Rosland Barn, Green Close.
- Hardstanding surface for HGV operating centre, Rosland Barn, Green Close.
- Outline application for erection of dwellings and B1 floorspace etc. on the former H L Gorner garage site, Old Road, Clapham (revised application).
- Retention of timber kitchen, classroom and toilets on land at Burn Head Farm, Mewith.
- Retrospective change of use to campsite, land at Burn Head Farm, Mewith.
- Siting of static caravan for site manager adjacent to Flying Horseshoe Hotel.
- Construction of Network Rail communications mast beside railway line near Clapham Station.

## **BROCKLANDS Woodland Burial**

Environmentally-friendly burials  
open to people of all faiths

\* \* \*  
Each grave has a tree planted on it

\* \* \*  
Peaceful and secluded setting

\* \* \*  
Ask for a leaflet or come and visit

**Julia and Chris Weston, Rathmell**

Tel: 01729 840102

[www.brocklands.co.uk](http://www.brocklands.co.uk)



### **Planning applications approved:**

- New dwelling at Croft House, Newby.
- Conversion of outbuilding, extension and double garage at Lythe Birks, Keasden.

### **Planning applications refused:**

- Outline application for the erection of residential dwellings and the layout of public open space on the former H L Gorner garage site, Old Road, Clapham (original application).
- Change of use of Flying Horseshoe Hotel from Public House/Hotel to eight residential apartments.
- Planning – Flying Horseshoe Hotel: It was noted that within days of the Planning Committee's refusal to permit a change of use, all the external pub signs were removed. Their removal was thought to be unhelpful to any serious effort to market the property as a public house.

### **NEXT MEETINGS:**

The next meeting of the Parish Council, will be held on Tuesday, May 18, immediately following the Annual Parish Assembly, which will start at 7.30pm in the Village Hall. The next Parish Council meeting after that will be held on Tuesday, July 13 also starting at 7.30pm in the Village Hall.

## **MAGIC, MYTHS & LEGENDS**

All offers of help before the event are gratefully accepted – there's lots to do:

We need story tellers – come and see Linda Taylor at the Village Store for more information.

Stalls are available – speak to Sue Jarman on 51242

If you can help with stewarding or car parking please contact Kate Crosthwaite on 01756 730404.

Also ring Kate if you can help with setting up and dismantling.

## **Newsholme & Son**

(Established 1950)

*Electrical Engineers*

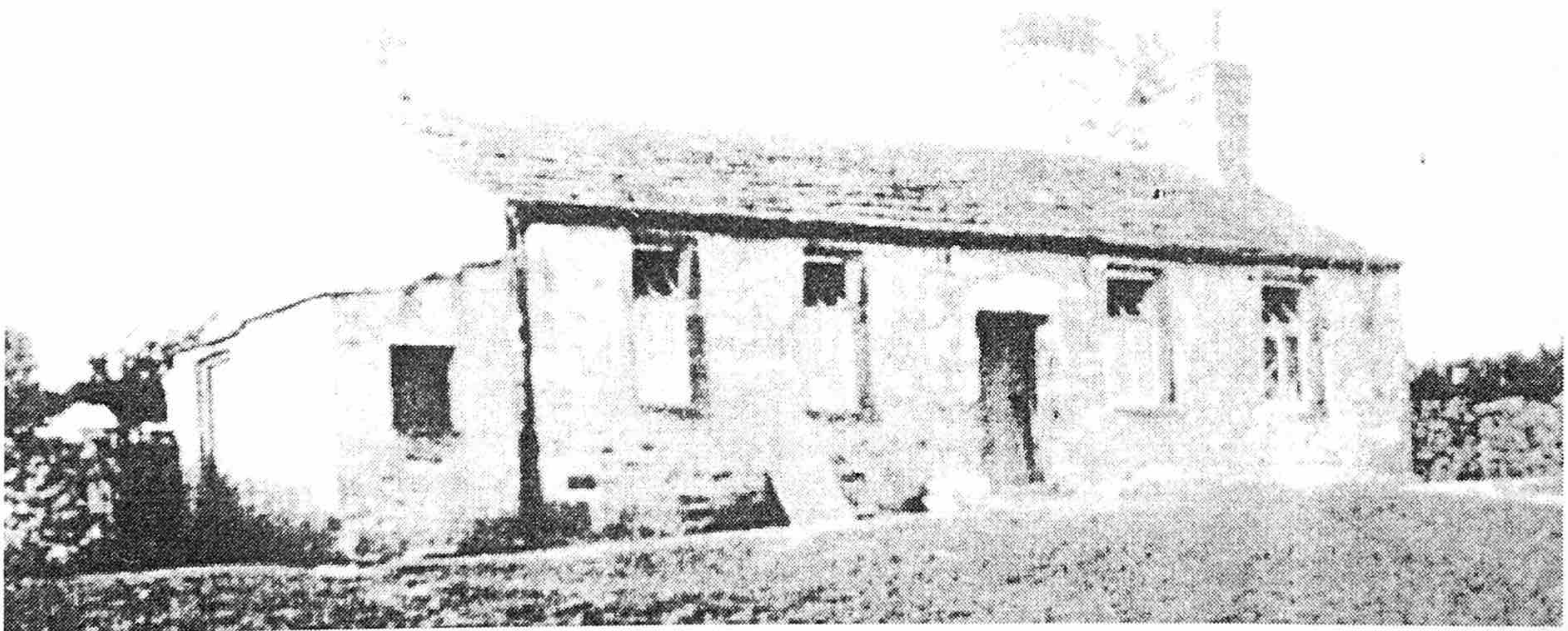
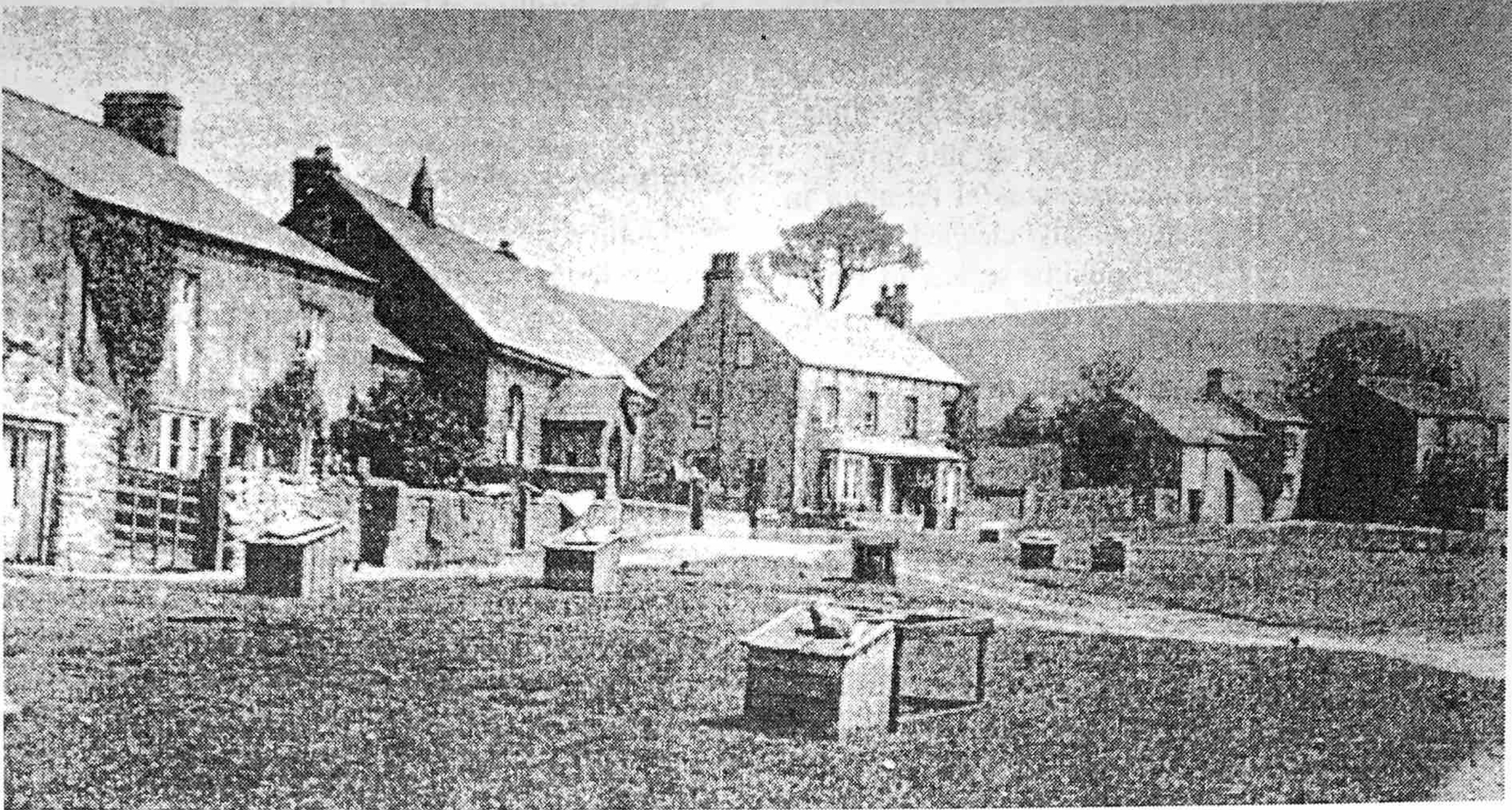
**STATION ROAD, CLAPHAM**  
**Write or phone 015242 51383**

Domestic • Agricultural Installations • Security Lighting and Burglar Alarms • Fire Alarm Systems • Additional Electrical Circuits • Faults • Breakdowns • Cooker and Night Store Heater Repairs.

**No call-out charges, No VAT, Free estimates**



## BYGONE NEWBY



*Top picture: Newby village green around the turn of the century, before the new school was built (note the chicken coops on the green. Above: Old school building around 1900.*

Linda & John  
welcome you to  
**CLAPHAM VILLAGE STORE  
& POST OFFICE**

Monday – Friday . . . . . 0700–1800  
Saturday . . . . . 0730–1700  
Sunday . . . . . 0800–1300

**Post Office Hours:**  
Monday – Friday . . . . . 0900–1730  
Saturday . . . . . 0900–1230

**Telephone: 015242 51212**

The school at Newby was closed in 1977, when the children were transferred to Clapham. Newby School had been built in the latter half of the 1920s and replaced an old school. The rent from a 2-acre field in Henbusk Lane paid towards the upkeep of the school, and the rent from Newby Hall paid for the services of a 'school master to educate the children in the parish'.

In the late 1930s and 1940s Miss Caudle the headmistress, sent the Newhouse children from Hardacre Farm home at 3 o'clock during the winter, so that they could cross the moor before nightfall.

Chapel House was farmed by Thomas Dawson's family at the turn of the century and the chicken coops on the green would be theirs. Thomas was married to Elizabeth Howson of the Cornmill, between Newby and Clapham Station, the remains of which can still be seen.



## Clapham School PTA News

The PTA is planning a variety of fund-raising events for the rest of the year and provides the following information for your diaries:

- Friday, 25th June – Family Barn Dance in the Village Hall
- Thursday, 16th September – Cheese Making Evening (with the Cheese Maker from Chipping – as seen on TV) and Wine Talk, Village Hall
- Friday, 15th October – Cabaret Night with 'Dave the Rave', Village Hall

For a change, the popular Quiz Night is planned to return in Spring 2005, rather than Winter 2004.

On Saturday, 27th March the children took part in a sponsored trampoline bounce at school, to raise some funds for new playground equipment.

A repeat of the Bags 2 School second hand clothes collection is coming up. So if you are planning to spring clean, then Clapham School PTA wants your second hand ladies', men's and children's clothing, bedding, curtains, shoes, belts, handbags and soft toys. We aim to deliver collection bags to local homes. If you don't receive one or it isn't big enough for all your items then large plastic dustbin bags can also be used. Filled bags should be returned to school on Thursday, 22nd April from 3.15pm to 4.00pm. Every little helps, as the total amount raised is dependent on the overall weight of all the bags.

Finally, look no further than here for your bedding plants and hanging basket needs this year! The PTA has been able to link in with a nursery to provide trays of bedding plants at reasonable prices. A price list should be included with this newsletter. If you would like to order any, please complete the form and send to school with the correct payment by Friday, 30th April. The plants are scheduled to be delivered on Friday, 21st May and will be available for collection from school in the afternoon (3.30 – 5.00pm). Delivery can also be arranged if required. Other schools have run this scheme for several years and we are told that the plants are of good quality. If you need further order forms for family or friends, please contact the school (51371).

## HARRISON & CROSS LTD.

ELECTRICAL & REFRIGERATION ENGINEERS

Our electrical retail shop is now open for:  
Chest freezers, Upright freezers, Larder fridges,  
Washing machines, Tumble dryers, Dish washers  
and Microwaves.

*We are NICEIC approved Electrical Contractors*

We do partial or complete rewires, electrical checks  
on existing installations.

Phone/Fax: 01729 823423  
Unit 6, Sidings Industrial Estate, Settle

*Free delivery up to 20 miles.*

## GO-Cars by Lin Barrington

Do you remember the publicity about 'Go-Cars' car club last year? After doing some research in Bentham, Ingleton, Burton in Lonsdale and Clapham, we found that there was quite a bit of interest in starting a car club, and we are now ready to launch 'Go-Cars'.

We have appointed Rob Eastwood to manage the project, and we will be starting with two small cars and a people carrier. Car club members can use the cars by booking them: members pay an annual subscription and then a 'pay as you go' system operates.

We will be distributing publicity about 'Go-Cars' and will be getting in touch with you if you expressed interest before. If you would like more information, phone us on 62753.

## Clapham WI

Clapham Women's Institute meets on the second Wednesday of each month at 7.30pm in the Village Hall. The group also includes members from Eldroth and Newby. New members, visitors and friends are always welcome. For more information telephone Moira Ings 015242 51316.

Programme:

April 14th: *Wildlife – a talk with slides*

Speaker: Mr. Peter Sharp

May 12th: *Found in the Cellar – Unusual and Hidden Treasure*

Speaker: Mr. Derek Soames

June 9th: *Questions and Answers about The Fire Service*

Speaker: Mr. Graham Robertson, fireman

## Station link and Taxibus

Settle Area Station link and North Craven Taxibus

Are you making use of this excellent service? A new timetable is enclosed with this edition of the Newsletter and includes examples of the very reasonable fares! The Scheme has funding for the next few years and will hopefully continue after that, if it is well used.

**Fares:**

Clapham to Settle is £1.10 single, £1.80 return.

Clapham Village to Clapham Station it is 30p.

Newby Lane End to Ingleton costs 85p single, £1.50 return

Cold Cotes Lane End to Ingleton is 65p single, £1.10 return.

Concessionary fares are available.



## CHURCH NEWS

The Rev'd Ian Greenhalgh was instituted as vicar of the United Benefice of Clapham and Austwick with Keasden and Eldroth on 3rd April. He writes: We moved into the Vicarage on the 3rd March, and after unpacking what seemed like an unending number of boxes, finally felt that we had really arrived in our new home. We are so grateful to a whole range of people who have made us so welcome since our arrival, and already we feel part of a new community and look forward to meeting many of you over the coming weeks and months.

We have both always had a love for this area, and in my case as a relatively young lad encountered the challenge and delights of Ingleborough and Penyghent. I feel so privileged to have been chosen as your new vicar, and honoured to follow such a faithful priest and pastor in John Dalby.

I hope that during these early days of ministry I will meet many of you at Church, and I also intend to systematically visit all the homes in this benefice. I would ask you in particular to let me know of anyone who would like a visit, especially the sick or housebound.

I have been ordained in June this year for 27 years, and have enjoyed the variety of ministry within the Church. During the past 20 years I have been a Royal Air Force Chaplain in a variety of locations but am now looking forward to a new challenge, and becoming a real part of the Church and community in our villages.

May God bless you all.

Your friend and Vicar

Ian Greenhalgh. Telephone 51313

## HOLY WEEK SERVICES

**April 5th to 7th Mon-Wed**

Clapham 7.30p.m. Austwick 10.30a.m.

**April 8th (Maundy Thursday)**

United Service at Clapham 7.30p.m. followed by Watch of the Passion.

**April 9th (Good Friday)**

Clapham 10.00a.m. Austwick 2.00p.m.

Keasden 6.45p.m. Eldroth 7.00p.m.

**April 11th (Easter Day)**

Clapham 11.00a.m. Austwick 9.30a.m.

Keasden 2.00p.m. Eldroth 7.00p.m.

**Christian Aid week** is this year May 9th-15th and there will be the usual house-to-house collection.

Preparations are continuing for the Exhibition of Angels as part of the Festival on May 8th and 9th. Willing helpers please contact Jean Claughton on 51491.

## POWER OF THE PRESS

Penny makes marmalade and a couple of years ago asked for jam jars via the paper. So many came that she contemplated a bigger house. Rosie and Christine asked for wool for jumpers for Chernobyl children and following an appeal in Skipton Building Societies, a room in Christine's house was so full an entire day had to be set aside for sorting it. People are so generous and we all hate waste. Knitters are already busy making beautiful sweaters for the Belarussian children. I must get cracking with plans for the sixth 'Clapham day' for the CCP (UK) group as August will come quickly. I think I have sorted out the itinerary now but every year we learn something new.

1999 – Croquet is not a good thing as balls hit parked cars.

2000 – Clapham rain always comes at the wrong time.

2001 – Car sick boys are a nightmare

2002 – Teenage girls take ages in the loo especially if there are weighing scales around.

2003 – A holiday just before the event means frantic long distance phone calls.

2003 went so well I don't know how it can be matched in 2004. However, on a frosty 1st March two of the Clapham ladies came here with tales of wool and jumpers so now I must do my bit. I shall start soon on the 2004 day when I have spring-cleaned, written an essay, sorted dad's 90th birthday, been to Dorset, had the cat micro-chipped etc, etc.

These children are so worth the time and enjoy Clapham. Perhaps I'll skip the spring cleaning – again. They won't notice.

*Janet Raine, Clapdale Way*

## Broadband

Is anyone interested in applying for Broadband?

We need a committee forming with someone to lead an initiative to apply for this. We need 150 subscribers and we have 55 so far. I am unavailable to lead this, but will help people to liaise to form a committee. Please phone Jean Davey 015242 51321

**Arbutus**  
Country  
Guest House



offer a discount to Friends  
and Relations of locals

*See Jackie or David for details*

**RIVERSIDE, CLAPHAM**

**Tel: 015242 51240**



## CLAPHAM A CONSERVATION VILLAGE

In accordance with our original brief, the Development Association is working with Yorkshire Wildlife Trust on a conservation project within the village.

It was identified that the section of the riverbank by Fall View at the top end of the village near the waterfall has long been neglected. The whole section is completely overgrown by Snowbushes. These bushes were originally planted by estates as cover for game birds but in our village they have completely taken over some sections. They completely obliterate the ground, preventing other plants from thriving and eventually nothing survives except them.

We are applying to BTCV (British Trust for Conservation Volunteers) for a grant to clear the Snowbushes and renew fences as well as creating a proper path and steps along with other allied projects in this part of the village. The grants will take a little time to come through; the work will involve local tradesmen and volunteers under qualified supervision to undertake part of the project. This is where YOU come in, it has been suggested that it would be great if some of the ground clearing work could start sooner rather than later in an effort to open this section visually so that the Waterfall can again be seen from the road. The dates of the 3rd and 4th of April have been allocated, so that volunteers can come along and help to cut down and dispose of some of this debris. Don Vine from Yorkshire Wildlife Trust will be there to lead and help us in this valuable first phase of this project. The more time you can give over those two days the more we will get done;

*So please all you budding conservationists male and female, please spare a little of your time and give us a hand. Meet outside Fall View at 9.30 on Saturday 3rd and Sunday 4th of April.*

Elsewhere in this news letter there is a full update on the progress of the First Clapham Festival of Magic Myths & Legends. At this stage I would like to thank all of the residents and other volunteers who are

giving of their time so willingly to try and help with the organisation and preparation for the festival. Over the Festival weekend of May 8 & 9th, Church Avenue, and Riverside will be closed to through traffic, residents, carers and essential vehicles will of course still have full access. We have received permission from Dalesmoor Homes that residents who would normally park on the road-side can use the car-park at the rear of their building, accessed from the side of the Village Hall, as long as no one is blocked in, (at owners risk). It is proposed that some stalls may be situated along either or both these roads.

As most people will have seen, the new village brochure has now been completed, special thanks to Gus Stewart and James Innerdale for their extra help in this production. The web site is now up and running on [www.claphamyorkshire.co.uk](http://www.claphamyorkshire.co.uk), eventually there will be a village news page that will be pass-worded so that only readers of this publication will have the code to enable local news and views to be aired on the site. We would appreciate any comments on our activities please contact me at Arbutus House or on our e mail [cda@arbutus.co.uk](mailto:cda@arbutus.co.uk).

Thanks again to all those for your continued support in our activities.

David Kingsley

*Chairman (Clapham Development Association)*

## Clapham Snooker Club

The future of this village facility is uncertain as negotiations with the National Park are ongoing. Obviously we would like to retain this facility, so if we are unable to keep our current room at the Reading Room we would like to know if anyone is aware of any other location that may be available for the use of the Snooker Club. If you are able to help please contact Paul Close, Giffords Farm, Clapham Tel. 51277.

### Local Food for Local People

GROWING WITH GRACE  
CLAPHAM NURSERIES . . . .

offers an extensive range of organic vegetable & fruit bags delivered to your door every week

Tel: Sue on 015242 51723

**Come & visit our Organic Shop  
Over 2 acres of greenhouses  
growing organic produce**

[www.growingwithgrace.co.uk](http://www.growingwithgrace.co.uk)



### Ruth A. Woodhouse \* Professional Florist \*

*available for  
Weddings, Funerals, Special  
Occasions and Demonstrations*

**FOUNDRY COTTAGE  
FLYING HORSESHOE COTTAGES,  
CLAPHAM, via LANCASTER LA2 8ES**

**Telephone: 015242 51157**



# GAPING GILL

## A Special Year for the Craven Pothole Club

The Craven Pothole Club was founded in 1929 and this year celebrates its 75th Anniversary. The CPC is of course well known for its annual Gaping Gill winch meet, held each August Bank Holiday week, when visitors flock to Clapham to be lowered by winch down the 340 feet deep entrance into the Main Chamber, the largest natural cavity in Britain.

The CPC came into existence in no small measure due to the vision of Skipton man and Ermysted's Grammar School pupil, Albert Mitchell. He gathered together a small group of like-minded individuals with a passion for the underworld of Craven. They were known locally as 'Mitchell's Mudlarks'. Soon afterwards they began exploring some of the easier caves of the district, but had their sights firmly fixed on the famous Gaping Gill. John Birkbeck of Anley Hall, Settle first attempted a descent of the latter around 1850, but it was the famous French cave explorer, Edouard Alfred Martel, who succeeded in August 1895.

In 1931 the young club made a rope ladder descent and the following year, using a rudimentary windlass with which to lower people, held their very first meet beside Fell Beck. They have never looked back and, barring the odd exception, the war years and the 2001 Foot and Mouth epidemic, have each year held winch meets, delighting the hundreds of visitors who make the fascinating journey into the subterranean world. Today a state-of-the-art hydraulic driven winch provides a safe and effortless alternative to potholing techniques using wire ladders and ropes.

The CPC has always had pride in its relations with Dales folk, and recognising the need to put something back into the local community, has for many years contributed to the Clapham Church Fund, and made donations to numerous worthy causes, the children's playing field at Horton, being one example.

Membership of the CPC today stands at round 250 and includes people from all walks of life, including Clapham's very own Dr Farrer, who very kindly allows the running of the Gaping Gill camps. The club welcomes anyone who would like to develop caving skills and become a member of Britain's longest established caving club.

For this Jubilee Year the CPC is celebrating with a special dinner, and by publishing a 200 page pictorial book and launching an exhibition at Craven Museum in Skipton in October. The CPC has a fine library in Skipton and operates from its Dales HQ at Ivy Cottage, Horton-in-Ribblesdale. This year the Gaping Gill Winch Meet will operate for visitors between 21st and 30th August.

*Howard M Beck*

**Friends of Dave Anderson recently braved the weather to lay a wreath in his memory at Rowten Pot, Kingsdalet.**

## WHIST DRIVES

Whist Drives will be held in Clapham Village Hall at 7.30p.m on the following dates:

April: 9th, 16th (semi partner) and 23rd.

May: 7th, 14th (rainbow), and 21st.

The whist drive on 4th June will be in Clapham Primary School. Admission to each whist drive is £1 and includes refreshments. Proceeds are for the charity fund.

## ARTESCAPE *by Jean Davey*

### Painting Days at Croft House, Newby

Exclusive days in an organic garden. Water, herbaceous extravaganzas. Walled vegetable garden, lovely trees and distant vistas all in one place. Come and learn how to record all these things in pencil, crayon, pastel, water-based paint or oils. Extensive hands-on tuition for beginners and advanced students.

10am – 4pm with an hour for lunch (*Included in the price*)

£20 for the day or £15 if you bring your own lunch.

### Dates in July:

Tuesday 6th    Tuesday 13th    Tuesday 20th

### Dates in August:

Tuesday 3rd    Tuesday 10th    Tuesday 17th

Marquee available if wet, chilly or too hot!

**AGE**  
*Concern*

**NORTH CRAVEN**

*Advice and information for  
older people and their carers*

**CHEAPSIDE, SETTLE BD24 9EW**

**Tel: 01729 823066**

**01729 825669**

Registered Charity number: 700054



## **Anxious moments**

### **Crossing Morecambe Bay in 1804**

September 13th. Nine o'clock resume our Route to Ulverston, over Lancaster sands (& never shall I forget it) the morning was dark & Gloomy – Sophia in the time of Breakfast entertained us with shocking accounts of the peril & danger of the attempt from intelligence she had learnt from the wife of the Postman whom she protested she gave up for lost whenever he left her – her Ladyship was not to be dismayed so set forward with the Caravan consisting of two stages a Cart 2 Horsemen. When we reached Hest Bank found the Tide too high – so alighted at the Ferry House to await its going off – A young person passenger in one of the stages & encountered in the garden had she informed me crossed five & twenty times & only was in danger of drowning once, but confessed it was not in general conceived to be safe – this gave us some alarm, but at last we entered on the sands very courageously – tho the wind blew the clouds hung as it were in dread suspense over the tremendous mountains – When we came to the first of seven fords we had to cross – two was half a mile over (& this was one of those) rapid deep & wide – the singularity of the scene – the appearance of the Guide – the silence of every individual, broken only by the hoarse voice of the Guide bawling We were too far to the right, or left, the ocean – rocks – flocks of sea fowl, hovering over us – the immense plain of sand & distance from land – joined to the hysteric screams of poor Sophia which now assailed our ears (whose fears had been executed to the highest pitch before by the postmans wife) so worked upon our feelings that it is not easy to convey an idea of our strange situation. When about midway we met 2 postchaise 2 carts & one horseman with a chariot & attendants – this circumstance exhilarated our spirits wonderfully – and we proceeded with tolerable composure to cross Ulverston sands.

Diary of Millicent Bant, 1804 (*Essex Record Office*).  
*This has been reproduced as it was written at the time.*

## **Thanks**

**From Pat & Ian Briggs** We would like to say how much we enjoyed our six years in Clapham. We really appreciated the kindness shown to us by the villagers. We would particularly wish to thank those at our farewell lunch, for their friendship and support and for the gift of the lovely picture, now hanging in our new home. We have many happy memories of Clapham.

A special thanks to the Slater girls for their valuable help in the kitchen, and a big thank you to Sue and Marilyn for the wonderful buffet meal.

*Pat & Ian*

## **Newby Ladies**

Last year a small team of ladies and girls from Newby participated in the 5 km Race For Life event held at Broughton Hall, Skipton and raised an amazing £645.00 for Cancer Research. The event is being held there again this year on Sunday, 16th May at 11.00am and we hope to enter another team. Please call Libby Morrison (51011) if you would like to join us. You can walk, run or jog it doesn't matter which. If you can't make this day there are other events at Milnthorpe on Sunday, 13th June and Lancaster on Sunday, 18th July. Entry £8.50 for women, £5.00 for children and you also need to try to raise some money through sponsorship. See [www.raceforlife.org](http://www.raceforlife.org) for more information.

## **Spring Book Fair**

A Spring Book Fair will be held in Clapham Village Hall on Sunday, 18th April from 9.30 am to 5.00 pm Home-made food available.

Please telephone 015395 35125 for further details.

## **Relief for Sudan**

A recent Coffee Morning held at Bridge Cottage raised a magnificent total of £209 for the relief of the Sudanese people who have endured 15 years of civil war. Many thanks to all who contributed in making it a successful event.

## **The village of Clapham**

### **Description from a book in the 1930s**

The village of Clapham, which is a mile from the Midland Station, four miles from Ingleton, and five from Giggleswick and Settle, is situated in the neighbourhood of mountain, caves, rocks, streams, and woodland scenery. The residents delight in cultivating flowers, in their efforts to make their dwellings models of neatness and floral beauty. The village is divided by a mountain stream, which runs within the banks of trees and shrubbery intersected with small plots of cultivated gardens. The stream is crossed by the County bridge opposite the New Inn, a little lower it is crossed again by the new ornamental Jubilee bridge, erected by the inhabitants, it is also crossed near the Church by a Township bridge. The village abounds with lovely trees, some of which are wrapped with ivy and evergreens, which adds a greater charm to Clapham than streets crowded with shops. By the quaint old Church and burial ground, the waterfall, brushwood and overhanging rocks gives a lovely view to one of the nicest parts in the village.



# WILDLIFE IN CLAPHAM

## JANUARY

The mild weather we had in the third week of January brought out some early moths. They were Dotted Border, Pale Brindled Beauty and the Chestnut.

A male Reed Bunting in full breeding plumage was seen on Newby Moor on the 24th. A male and female Reed Bunting were seen on Hardacre Moss on the 25th. A flock of six Siskins were seen at Meldingscale Farm on the 24th. Very few Siskins and Redpolls have been seen this winter around the local area. Five Snow Buntings and two Golden Plovers were seen on Ingleborough by Jess Hart on the 30th.

## FEBRUARY

A small flock of Redwings were seen flying over Ingleborough Hall and a large flock of Fieldfares were seen at the show cave on the 6th. They are the first Redwings and Fieldfares I have seen in the local area for well over a month. The Yellow Browed Warbler was seen briefly on the Nature Trail on the 6th. (In January's bird watching magazine they are reporting up to 12 Yellow Browed Warblers wintering in this country. One Green Woodpecker was heard calling at Trow Gill on the 6th. Two Buzzards were seen flying over Norber on the 6th. A flock of six Skylarks were seen on Hardacre Moss on the 8th. Flocks of 20, 22 and 5 Lapwings were seen around the local area on the 14th. A male Great Spotted Woodpecker was seen displaying to a female outside the Flying Horseshoe, also a male Goldcrest and a Male Treecreeper were seen displaying to future partners by the River Wenning. The above were all seen on the 14th. One Skylark was heard in full song on Hardacre Moss on the 14th. One Mute Swan was seen flying over Ingleborough Hall on the 16th. On the 16th a partially fledged bird

(House Sparrow) was found dead outside the village shop, which means that the adult birds must have mated and laid eggs sometime after the middle of January.

A caterpillar of the Ruby Tiger Moth was seen on the Eldroth road at Meldingscale Farm on the 15th. The moth spends the winter as a larva and can sometimes be found basking in the sun during the late winter and early spring. One Woodcock and three Buzzards were seen at Ingleborough Hall on the 18th. A flock of about fifty Pink Footed Geese flew north over Keasden on the 20th. One hundred and thirty Lapwings were seen in several flocks around the local area on the 29th. A flock of six Golden Plovers were seen in fields next to Laithebutt Lane near Clapham and a flock of fourteen Golden Plovers were seen flying over Nutta Farm and a Peregrine was seen chasing Lapwings near Clapham on the 29th.

## MARCH

The first Oystercatcher of the spring was heard calling as it flew over Clapham during the night of the 4th. On the 5th Jess Hart brought me a moth that she had found in Selgill Pot, north of Horton in Ribblesdale. I identified it as a moth called The Tissue, which is very rarely seen as an adult, as it doesn't come to light traps and it hibernates during the winter as an adult in caves. One Curlew was seen and heard calling at Meldingscale Farm on the 6th. One Oystercatcher was seen near the Greenhouses at Clapham and two Oystercatchers were seen by Crook Beck at Calterder Bridge on the 13th. One Grey heron has been seen feeding on Frogs at Ingleborough hall pond regularly. A baby Coaltit was seen feeding at Park View on the 22nd and on the 23rd two Goldfinches, two Ravens and two small flocks of Meadow Pipits were seen flying over Ingleborough Hall

## MELDINGSCALE

*Locally produced*  
**ORGANIC BEEF**  
delivered to your door  
or collect from the farm

**Tel: 015242 51345**

e-mail: meldingscale@hotmail.com

ORGANICS

## Bethel Chapel

### Sunday School Prizegiving and Anniversary Weekend

Saturday, 29th May – Prizegiving 7.30 pm.

Songs, recitations and musical items by children.

*Speaker:* Mr N Brewer

Supper at close.

Sunday, 30th May 11.00 am and 6.30 pm.

*Speaker:* Mr and Mrs J Bovenizer

Sunday lunch following morning service.

Everyone welcome to come and join our special weekend.

Sunday and weekday services as usual.

This Free Newsletter aims to keep everyone in Clapham, Keasden and Newby in touch with what is happening in our community. It does, however, cost a not insignificant amount to produce, and advertising is a very necessary aid to the finances.

For Advertising your products and services, please contact Ray Hull on 015242 51492

Articles, News and Ideas PLEASE! for the next issue by **25th May, 2004** to the Village Shop, Chrissie Bell, Sylvia Haxell, Ray Hull or David Sharrod.

Articles submitted but not included in the present publication will be put in future newsletters.