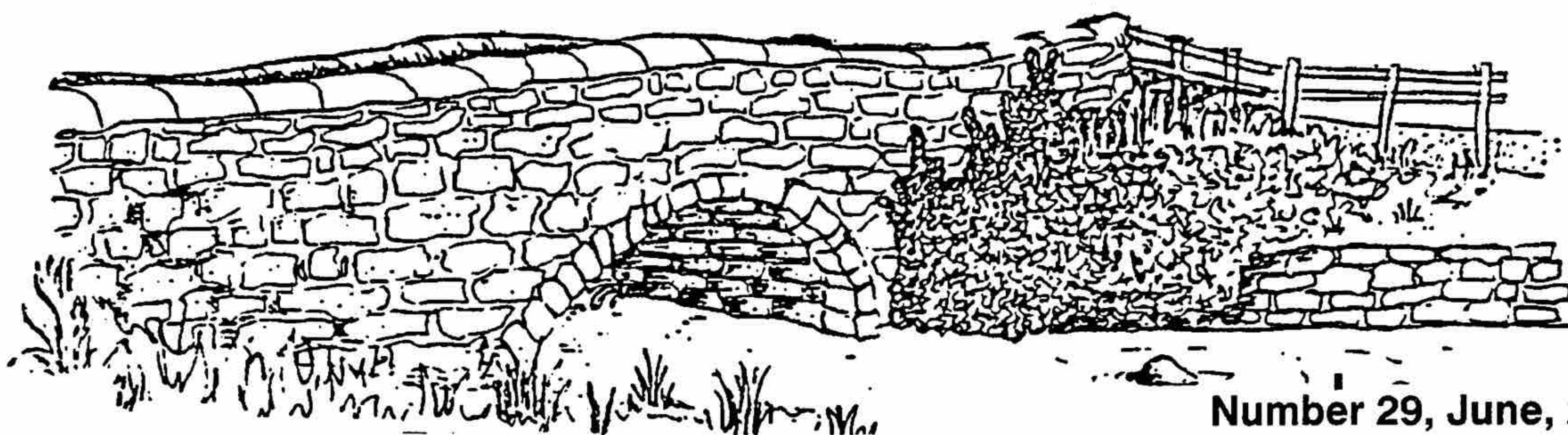


CLAPHAM & DISTRICT NEWSLETTER



Number 29, June, 2004

OH! WHAT A MAGICAL WEEKEND . . .

Well, finally the festival is over, probably one of the biggest upheavals the village has seen in recent years. Hopefully, most of you were around over the weekend and were able to make up your own minds as to the success or otherwise of the event.

My most memorable feeling was the torchlight procession up to Trow Gill, finishing with the splendid display of all the assembled lanterns and the fireworks display. There was a buzz in the air with so many excited voices and laughter.

During the two days we were well entertained by a superb and varied mix of actors and villagers alike, telling stories along the trail to and in the cave and at street corners around the village. There were clapping songs, Morris Men and Women Mummers and the bringing to life of the tale of our own Dame Alice on the stage with a specially written version of the old story.

The Church was an absolute picture, there were literally hundreds of angels in every shape and size and I feel a very special thank you must go to all concerned especially our new Vicar for his support in conducting a special Sunday Service and judging the displays on the houses throughout the village.

Whilst I am thanking people, I must not forget the fantastic support from Dr. and Mrs. Farrer without whose permission this event would never have taken place. I was really heartened by the many number of people who attended and helped run the work group sessions and sub groups, in decorations, costumes, catering, publicity and parking.

As many will by now appreciate, this first festival, (and maybe the last) was originally the idea of the Yorkshire Dales National Park. They approached the Clapham Development Association with the suggestion that we might like to jointly run the festival as an enjoyable traditional event to celebrate the rich culture and beauty of this Yorkshire Dales Village, as well as celebrating their 50th anniversary. Our main hope was that it would be a success socially and financially, even though we do not yet have any final figures, I do know that we should have covered all our costs and there will be a surplus of revenue, but the executive are delighted with the overall feeling of wellbeing that exuded from all those who took part and attended. If you have internet access please log on to the Clapham website on

www.claphamyorkshire.co.uk and see a selection of photographs of the weekend.

'What next', I hear you cry, well, we are still finalising the administration, and are planning an open meeting so that all those who have an opinion can have their say, we do know that we made some mistakes and upset one or two people, for that we are genuinely very sorry, we hope that those mistakes would not be repeated at other events. This meeting should happen within the next month or so. The hope is for one final, festival newsletter to come out, which will give more details.

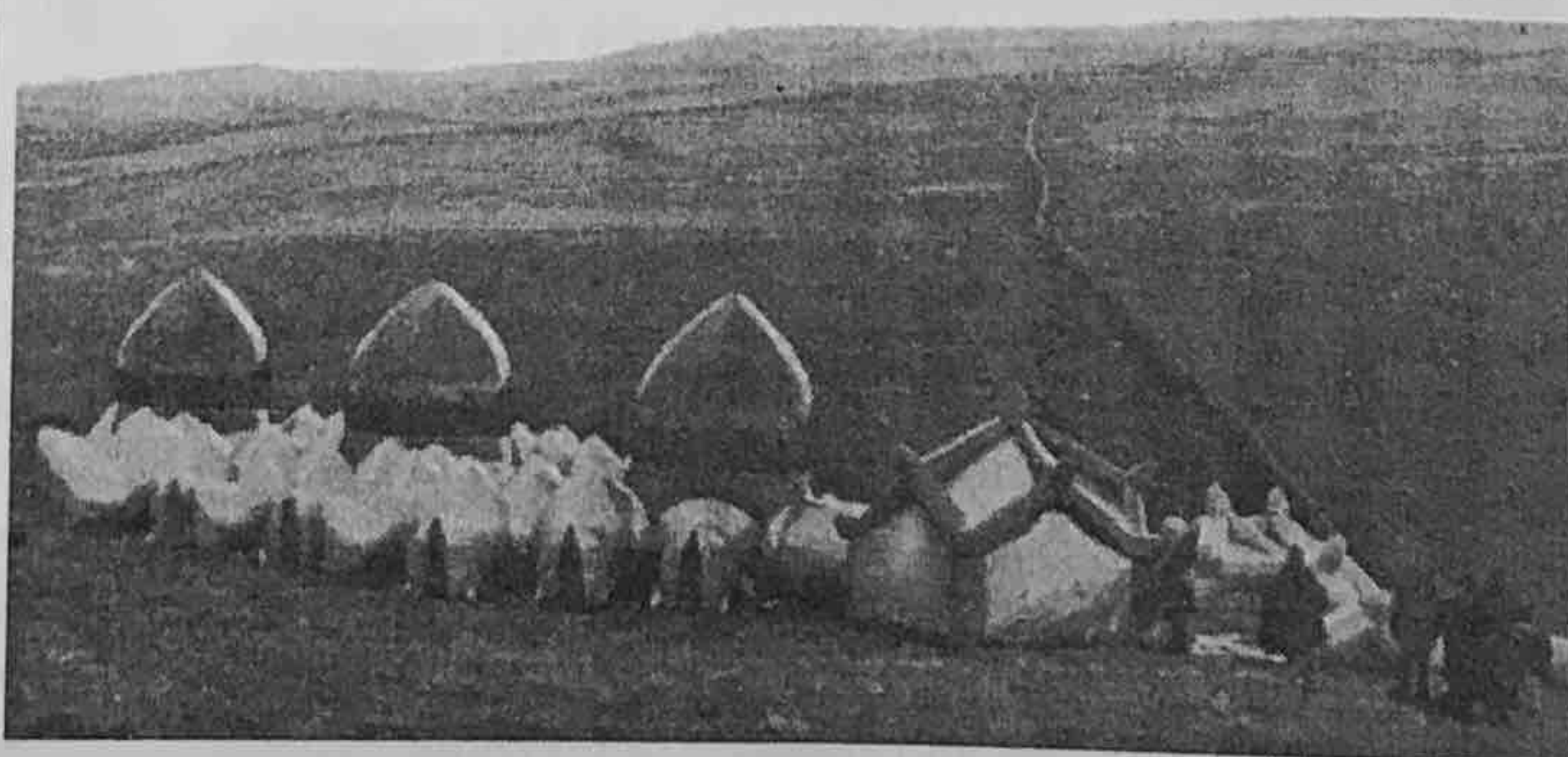
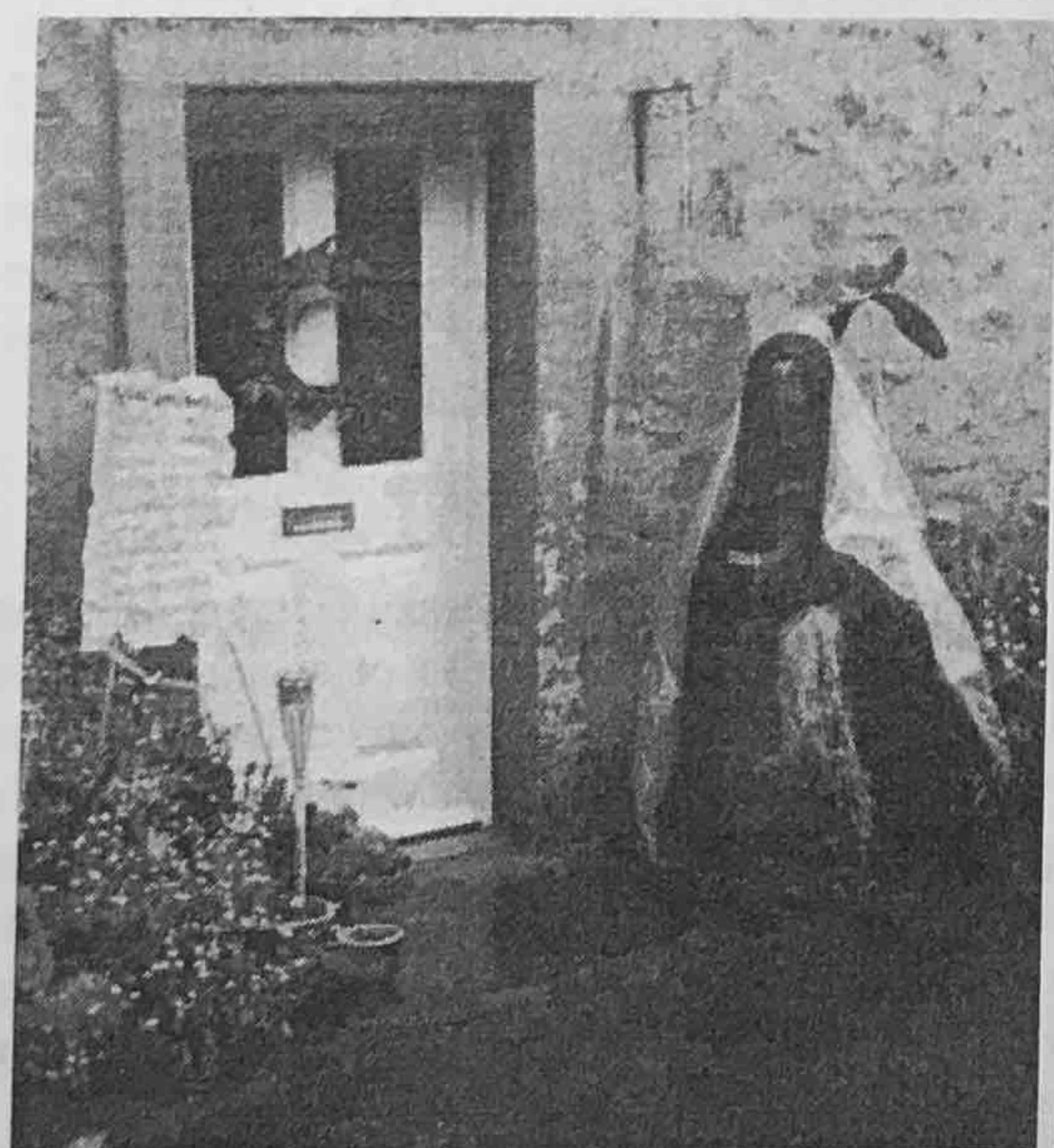
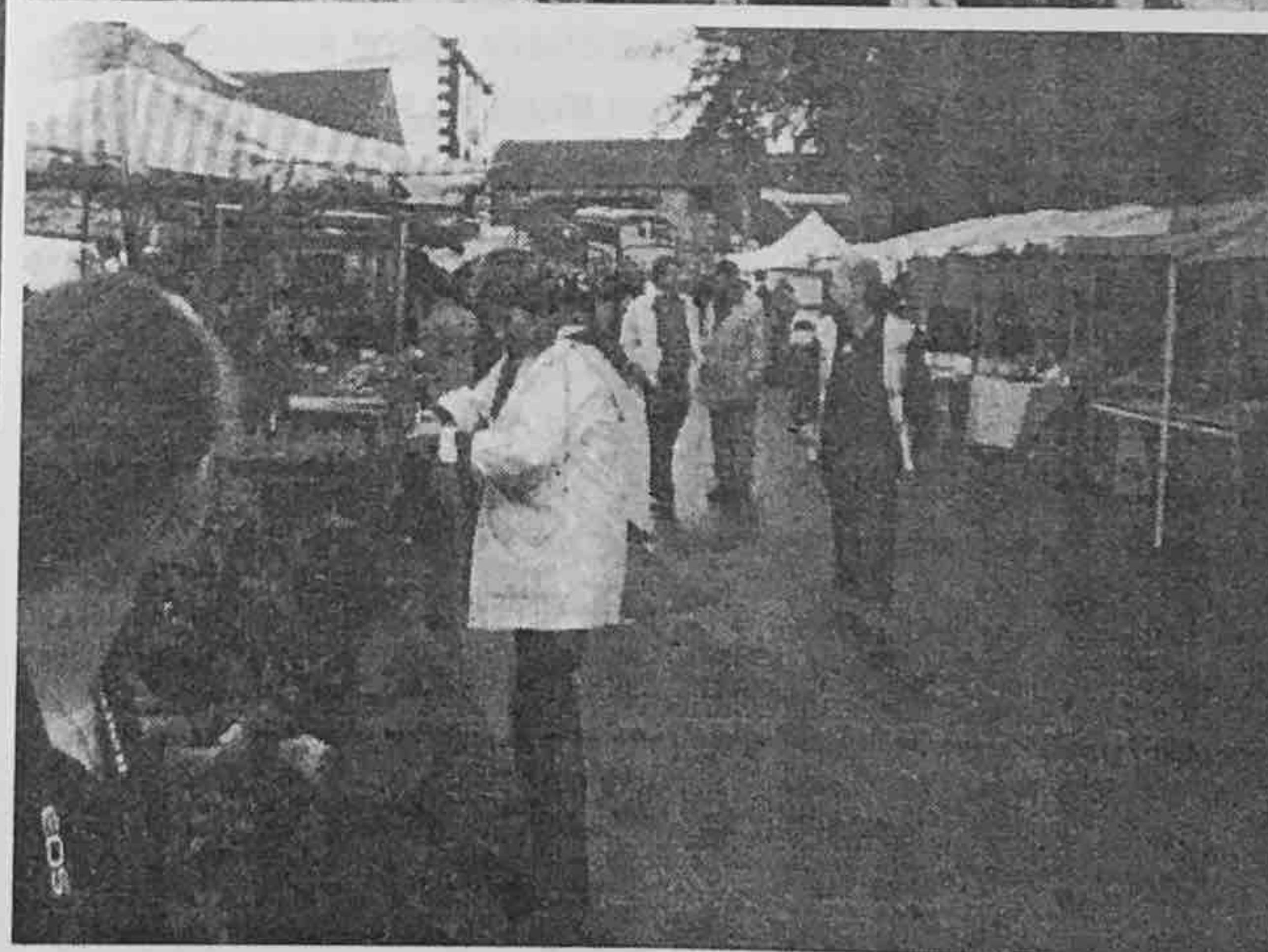
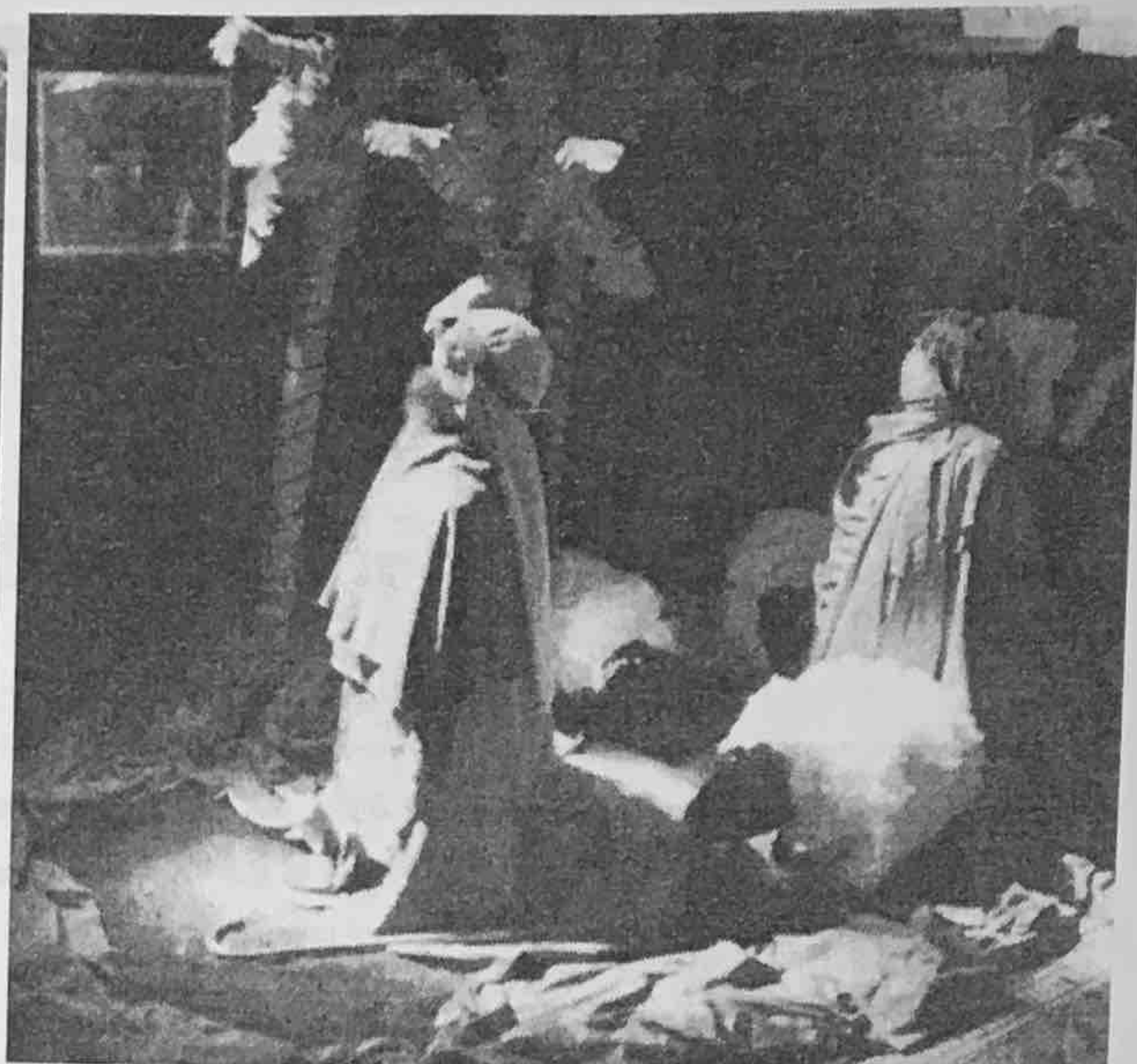
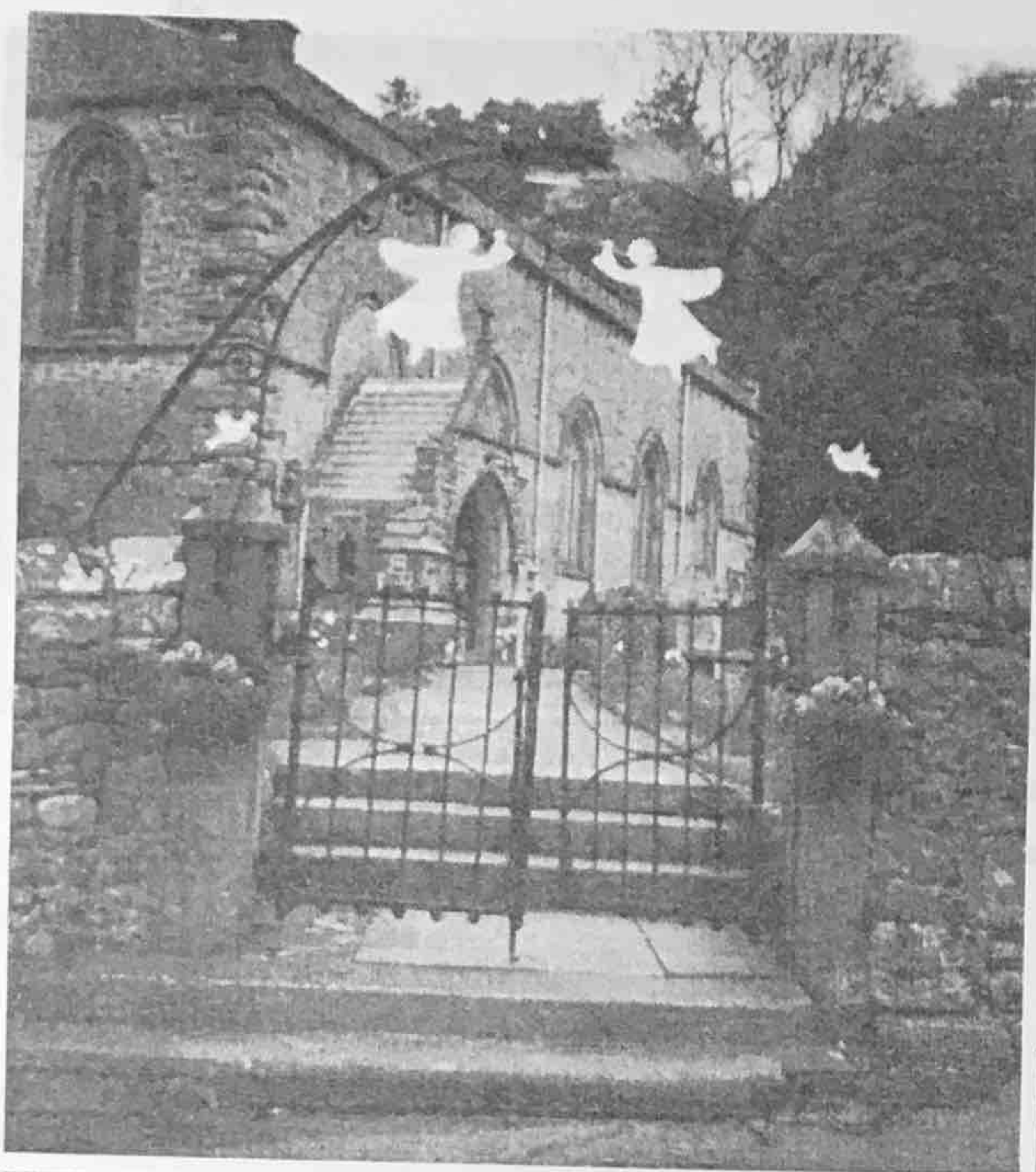
CONSERVATION PROJECT

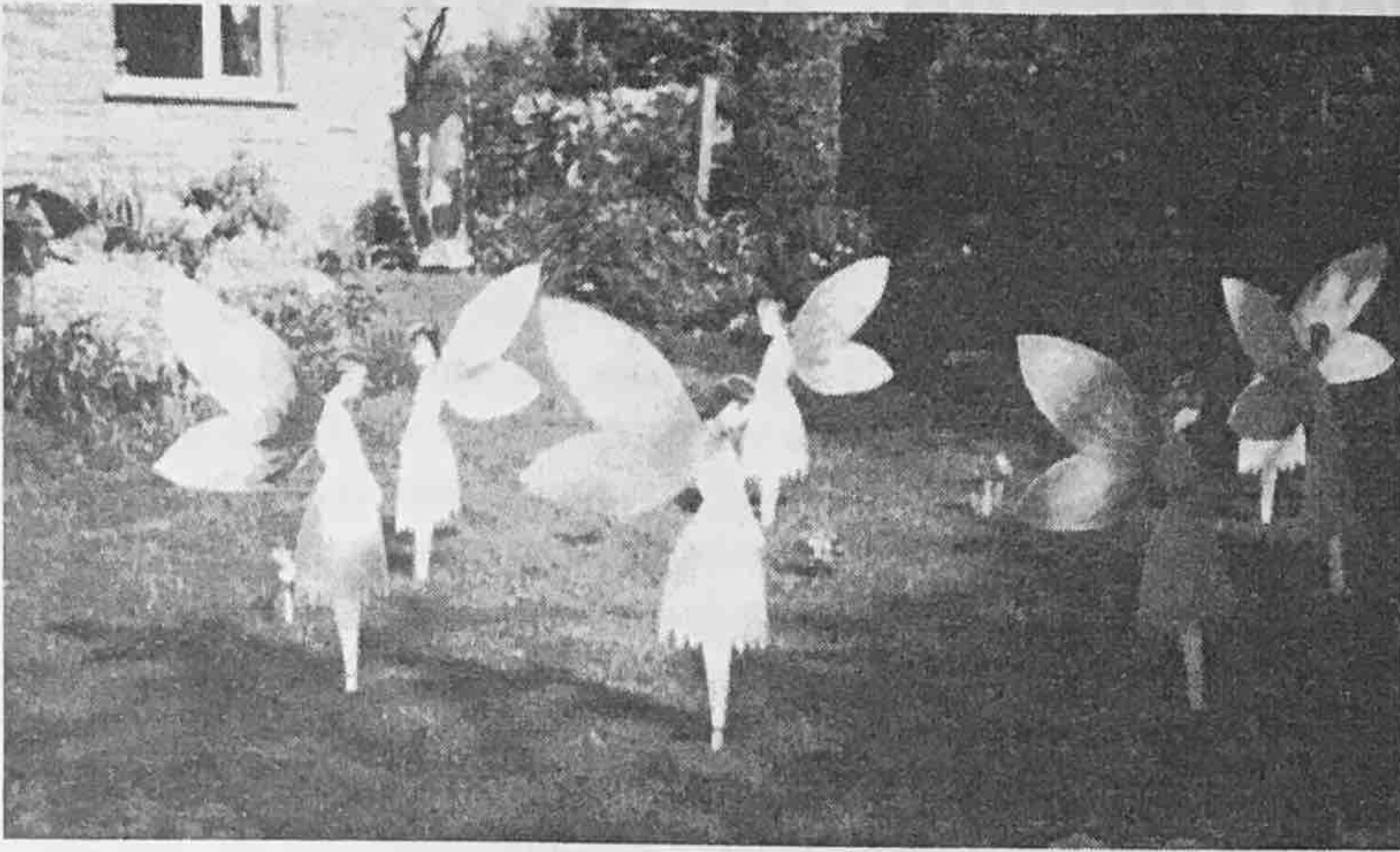
As mentioned in the last *Clapham Newsletter* we are working on a conservation project at the top of the village adjacent to Fall View, the next stage will involve more help from our band of volunteers to continue in this area and make new steps and a proper pathway down the banking to the waterfall, along with new estate-type fencing and a gate at the roadside. Ultimately it is hoped to provide a flat area so that disabled people can also view this picturesque section of the village in safety. The new fencing will extend from the Church Bridge up to the wall and also along the side of the river beside Park View Cottage to make a safer pathway to the children's play park. We have applied for funding for the fencing and materials and we hope that this project will restart during the summer, it is under the guidance of a professional fieldworker from the *Yorkshire Wildlife Trust* who will be ensuring that the work will be correctly and safely carried out.

FINALLY

Shortly there will be the first Annual General Meeting of the Clapham Development Association, when we shall be holding elections for our committee. The association is open to all people who live or work in Clapham and there is a nominal membership charge to cover administration costs. If you feel that you would like to be a member, feel free to contact either me, David Kingsley at Arbutus Guest House, Linda or John at the shop or Sue at Ingleborough Cave.

Pictures of Festival overleaf





PARISH COUNCIL MEETING – 18th MAY, 2004 (SUMMARY REPORT)

The Parish Council agreed conditionally to accept the present outline planning application for the former H L Gorner garage site in Clapham. This application includes 1,000m² of floorspace for employment use, and although this is less than had originally been hoped for, it was thought to be probably as much as could realistically be expected. However, the Parish Council regards the proposed 1,000m² as a minimum, and would not readily agree to a reduction in this level of provision. Moreover, the Parish Council would require the employment-use floorspace to be completed and fitted out ready for use, together with proper access, utilities and parking provision, prior to the start of any housing construction which may be approved for the remainder of the site. It would also expect the building or buildings for employment use to be constructed in such a way that they could be offered either as a single unit or as a number of smaller self-contained units, thereby making them attractive to businesses of various sizes.

As for the remainder of the site, the Parish Council would be willing to accept in principle some low-density housing development. However, any such acceptance would be conditional upon the proposed housing development being on a scale and to a design which was, in the opinion of the Parish Council, fully compatible with the existing built environment of the village. Moreover, any such housing development would also have to be on a scale which, in the opinion of the Parish Council, could be absorbed by the existing community without damage to its character or to its established economic and social balances.

A letter is to be sent to the Planning Authority setting out these conditions.

Parish Council appointments: Teddy Dawson and Eileen Plumridge were re-elected as Chairman and vice-Chairman respectively. Paul Pearce has decided to stand down as clerk, and his resignation had been accepted with effect from the end of June.

The present notice board in Newby (and a Victorian

letter box) are attached to the wall of a roadside barn. Planning approval has recently been given for the barn to be converted into a dwelling house, and the owners apparently wish to have the notice board and the letter box removed to enable the conversion to proceed. It was agreed that if the notice board had to be removed, it would need to be replaced by a smaller free-standing structure, probably located on the Village Green in the centre of the village. It was agreed that if possible the notice board and the letter box should remain close together within the same general area.

Craven District Council have offered specialist advice on the safety of churchyard memorials, and a preliminary site meeting has been arranged to get some idea of what, if anything, may need to be done in Clapham churchyard to comply with current safety standards. Meanwhile, the PCC will be asked to place a more prominent notice at the church gate advising people that children should not be allowed to play in the churchyard.

A comment was made about the poor condition of the highway below the Keasden cross-roads, and about the inadequacy of recent patching and verging works. For some time, the Parish Council has been pressing NYCC to improve this road and remains hopeful that scheduled surface-dressing work will at least bring it up to a more acceptable standard. A detailed inspection is planned for this road, and for a number of other local roads where surface defects or problems with drainage or signposting have been highlighted. A Parish Council representative will join the NYCC Highways Engineer for this inspection.

Skew Bridge, which carries a footpath over the Wenning river, remains closed due to concerns about its structural safety. It seems that the cost of replacing the bridge is very high, and the work is unlikely to be started until later in the year.

Only four people had responded to a notice placed in the Parish Newsletter asking for volunteers to help



**Fisher
Wrathall**

**ESTATE AGENTS
CHARTERED VALUATION SURVEYORS**

We provide advice on all types of property transactions including the sale of rural properties and the development of Land and Buildings

Lancaster (01524) 68822
Morecambe (01524) 417272
www.fisherwrathall.co.uk
e-mail: property@fisherwrathall.co.uk

The Old Warehouse, Castle Hill, Lancaster
17 Princes Crescent, Morecambe

Thomas Redhead

Clapham's Solid Fuel & LPG gas supplier
supports British coal

Six grades & sizes of coal
from £5.00 per 50kg bag – including V.A.T.

20 different smokeless fuels
from £6.00 per 50kg bag – including V.A.T.

Bottled gas delivered to your door

QUALITY, RELIABILITY & CHOICE

Top up service available

015242 41626 or 41212

launch a local campaign for high speed access to the internet (broadband).

There had been a complaint about inadequate standards of cleaning and servicing of the public toilets in the Clapham car park. However, recent inspections carried out on behalf of the Parish Council had found them to be in a condition which compared well with other public toilets in the area.

The National Park Authority expect to transfer the coach parking area to the centre of their Clapham car park in the very near future. The present coach stands will be white-line marked for car parking.

Internal auditing of the accounts for the year 2003/4 having been completed, the accounts were formally approved by the Parish Council. The Audit Commission's certification document was then signed by the Chairman and the clerk.

Planning applications approved since the last meeting:

- Demolition of outbuildings (subject to approval of change of use) at the Flying Horseshoe Hotel
- Hardstanding for HGV and erection of HGV maintenance building at Rosland Barn, Green Close.
- Formation of disabled access ramp at Ingleborough Hall.
- Part demolition of outhouse, conversion to porch, utility and toilet, at Bull & Cave Farm, Clapham.
- Replacement of conservatory with kitchen extension at Dovenanter, Keasden.
- New agricultural general purpose building, at Tewit Hall Farm, Newby.
- Construction of silage clamp, at Crina Bottom Farm.
- Conversion of barn to form single dwelling at Newby Hall Farm, Newby.
- Change of use to campsite: retention of kitchen, classroom & toilets on land at Burn Head Farm, Mewith.

Planning appeal:

Re: refusal of planning permission for two storey extension at Chapel House, Newby.

Planning applications awaiting decision:

- Siting of static caravan for site manager on land adjacent to the Flying Horseshoe Hotel.
- Outline application for erection of dwellings, B1 floorspace etc – former H L Gorner garage site, Clapham.
- Extension to rear to form kitchen and attic conversion at 2 Dovenanter, Keasden.
- External alterations to packing shed, including two external staircases and new windows and doors to facilitate the insertion of a first floor within the existing building at Clapham Nurseries.
- Construction of Network Rail communications mast beside railway line near Clapham Station.

Next meetings: The next two meetings of the Parish Council will be held on Tuesday, July 13th and on Tuesday, September 14th. Both meetings will be held in the Village Hall, and both will start at 7.30pm.

Summary of Chairman's Annual Report:

During the past year, the Parish Council had been successful in getting outside agencies to carry out a number of important public works within the Parish. They had completed important drainage schemes, including:

- construction of a new culvert under Station Road to prevent flooding of the highway;
- improvements to surface water drainage on the Newby Cote to Newby road (Henbusk Lane);
- clearing out the ditches alongside the Keasden Road.
- making a start on improving the Keasden Road – repairing the edges and patching the bad spots on the road surface. They had also agreed to top-dress the entire length between Clapham Station and the cross-roads later this year.
- increasing the priority for winter-gritting on the Keasden Road below the cross-roads, and on the road over Lawsings Brow.
- providing a waiting shelter on the platform at Clapham railway station; and a new bus shelter for Newby.

BROCKLANDS Woodland Burial

Environmentally-friendly burials
open to people of all faiths

* * *
Each grave has a tree planted on it

* * *
Peaceful and secluded setting

* * *
Ask for a leaflet or come and visit

Julia and Chris Weston, Rathmell

Tel: 01729 840102

www.brocklands.co.uk



Newsholme & Son

(Established 1950)

Electrical Engineers

STATION ROAD, CLAPHAM
Write or phone 015242 51383

Domestic • Agricultural Installations • Security
Lighting and Burglar Alarms • Fire Alarm
Systems • Additional Electrical Circuits •
Faults • Breakdowns • Cooker and Night Store
Heater Repairs.

No call-out charges, No VAT, Free estimates

- arranging for the bus serving Lancaster & Morecambe College to pick up students in Clapham village instead of from the exposed verge of the A65.
- replacing two of the street lights in Newby village with entirely new lamp units.
- arranging for the remaining overgrown areas of Clapham churchyard to be cut back and maintained to the same general standard as the rest of the churchyard.
- completing improvements to the Clapham to Austwick field-path
- fitting new lockable gates at both ends of the old main road to discourage travellers from using it as a camping place; and repaired the wire fence protecting the young trees planted on the nearby verge.

The Parish Council had also:

- maintained the Parish Precept at £3000 for yet another year.
- made donations to services and amenities used by or working for local people, including Settle Swimming Pool, Clapham School Community Computer Suite, the Clapham Development Association, the Citizens Advice Bureau, and Victim Support.

Organised public meetings, allowing local residents to comment on:

- plans for the re-development of the former H L Gorner garage site;
- the proposed re-organisation of local medical services in Craven;
- the draft 'right to roam' maps showing the proposed open-access areas in and around the Parish.

Intervened successfully to:

- prevent the building of twenty-three houses on the former H L Gorner garage site in Clapham.
- frustrate plans to convert the Flying Horseshoe Hotel into eight apartments.
- ensure that the caravan repair business in Newby is operated in accordance with planning conditions.

Whist Drives

Whist Drives will be held in the Village Hall on June 11th and 18th, July 2nd, 9th and 16th. On July 30th the whist drive will be held in the village school. All whist drives start at 7.30 p.m. the proceeds going to charity.

Clapham School PTA News

Lots of thank yous to say this month:

- to everyone who filled a bag for the Bag 2 School clothes collection, we raised a total of £151.20 for PTA funds
- to all those who sent in an order for bedding plants and hanging baskets. You should have received (and planted!) them by now and we hope that you enjoy them over the summer. Approx. £150.00 was raised for PTA funds in the process
- to all the children who took part in the sponsored bounce on Sat 27th March and their sponsors. The children raised £161.00 and the money will be used to buy new playground equipment for the school. The photo shows Katie Peach, aged 4 years, bouncing on the trampoline in the school hall.



The following fund-raising events are planned:

- **Friday, 25th June** – Family Barn Dance in the Village Hall with pie and peas supper, look out for posters. Adults £2.50, children are free but must come with an adult!
- **Thursday, 16th September** – Cheese Making Evening (with Robert Kitchen, the Cheese Maker from Chipping – as seen on TV) and Wine Talk
- **Friday, 15th October** – Cabaret Night with 'Dave the Rave', Village Hall
- In addition, it is planned to hold a school leaver's party on Thursday, 15th July and run a stall at the Street Market on 24th July

Many thanks for your continued support

Linda & John

welcome you to

CLAPHAM VILLAGE STORE & POST OFFICE

Monday – Friday 0700–1800
Saturday 0730–1700
Sunday open 0800

Post Office Hours:

Monday – Friday 0900–1730
Saturday 0900–1230

Telephone: 015242 51212

From the Vicarage

Dear Friends

RUN WITH PERSEVERANCE THE RACE THAT IS SET BEFORE YOU

I have been a keen Marathon runner for some 25 years now, and have learnt some important lessons about life from my running.

Running is an important part of my daily routine. I enjoy running, it keeps me fit and it allows me to switch off whilst at the same time enabling me to think through problems. Whenever I run Marathons there always come a time when it hurts, my legs feel extremely heavy and I just feel like giving up. However, by persevering I always come through the pain and on finishing the course feel a great sense of fulfilment, even joy.

Life is very similar to a race. There are times when it's easy, no problems, everything works well, and life is good. At other times life is hard: mistakes we make, failure, sickness, bereavements, so many things can lead us to feel like giving-up.

The words from Hebrews (chapter 12: verse 1) give us a clue as to coming through the difficulties and problems of life. 'Run with perseverance the race that is set before you'. The clue to success lies in the second part of the verse which says, 'looking to Jesus the pioneer and perfecter of our faith'. In my experience as a Christian and even as a runner, Jesus enables us to draw close to God when life hurts. If we seek God's help and strength he will indeed bring us through the pain and knocks that life gives at times.

My prayer for you all is that God will give you perseverance in order to come through the problems and pains of life, to know the freedom, even elation of winning the race.

Every blessing.

Ian

HARRISON & CROSS LTD.

ELECTRICAL & REFRIGERATION ENGINEERS

Our electrical retail shop is now open for:
Chest freezers, Upright freezers, Larder fridges,
Washing machines, Tumble dryers, Dish washers
and Microwaves.

We are NICEIC approved Electrical Contractors

We do partial or complete rewires, electrical checks
on existing installations.

Phone/Fax: 01729 823423
Unit 6, Sidings Industrial Estate, Settle

Free delivery up to 20 miles.

CHURCH NEWS

Africa is rarely out of the news now, especially the tragic affairs in Sudan. On Sunday, July 18th from 2.00 p.m. until 6.30 p.m. the Ewecross Deanery is to present an **African Event**. It is an afternoon to learn about involvement in Africa though displays, short talks, and activity, with a celebratory service when the Archdeacon, Rev. Malcolm Grundy will speak about his visit to the Sudan. It will be rounded off with an African style buffet. All are welcome and the event takes place at Ingleton Middle School. For more details please contact J. Shackleton (015242 51695). Used stamps for Sudan relief are still required but no more U.K. 1st and 2nd class ones. There is a box for these in Church or please give them to Valerie Potter.

The **Christian Aid** collection amounted to £630.66 of which Clapham School children gave £70 by making and selling small items each day. The Clapham School leavers service will be in Church on 14th July at 2.00 p.m.

The **Street Market** this year will be on Saturday, 24th July – official opening at 9.30 a.m. There will be a meeting for all helpers and prospective ones at Jean Claughton's home on Monday, 7th June at 7.30 p.m. For more information telephone 51491.

Stall collection – Will those willing to help with collection of goods around Clapham and Newby meet on the area near Cross Cottages at 6.00 p.m. or onwards on Tuesday, 13th July. Some cars are needed.

On Sunday, 8th August the service at 11.00 a.m. will be in the garden at Ingleborough Hall and be a united one for everyone in both parishes. Please bring a picnic lunch. Afterwards there will be games for the children.

Future Plans: August 25th – 27th in Ingleborough Hall garden, a children's Holiday club from 1.00 p.m. – 4.00 p.m. Children of all ages welcome but a parent must accompany those under 4. More details later.

Booklet to celebrate the life of John Dalby

Anne Read and Stan Lawrence would like to thank all those who purchased copies of the booklet and assisted with its distribution. Very special thanks are due to Cross Leigh Stores, Clapham Village Stores and Austwick School for selling copies for us.

We have covered the expenses of publication and are able to make donations of £50 to each of the four churches in the parish. All the initial printing was taken up. We had a short reprinting and the remaining copies will continue to be available from Anne Read 015242 51388 or through Stan Lawrence 015242 51294. Again any profits will be suitably distributed.

Women's Institute

Clapham Women's Institute meets on the second Wednesday of each month at 7.30 p.m. in the Village Hall. The group also includes members from Eldroth and Newby. New members, visitors and friends are always welcome. For more information telephone Moira Ings 015242 51316.

PROGRAMME:

- June 9th:** Questions and Answers about the Fire Service
Speaker: Graham Robertson, fireman
- July 14th:** A Writer's life, anecdotes and stories.
Speaker: Ms Peggy Hewitt
- August 11th:** W.I. Walk
Details to be announced.

Chernobyl children

Clapham lights and children from Belarus.

Night time lights can be magical. The lantern walk on 8th May to the cave was special, lights outside St. James Church on the night Alan Bennett spoke were lovely and I vividly remember my first view of St. Petersburg at night.

I hope the Chernobyl children will feel Clapham at night is memorable too. On Tuesday, 10th August as well as swimming, a video (Finding Nemo), lunch and board games, we plan a bonfire, supper and a candlelit walk around the labyrinth at the yurt.

If anyone has cakes, fruit or sweets to give for the bonfire supper please bring them to 2 Clapdale Way on Monday, 9th August. As last year we will give the children sweaters to take home. There will be a table top sale for funds on June 20th – providing money for bacon sandwiches at the supper.

It is now 18 years since the Chernobyl nuclear accident happened but children from Belarus continue to suffer the consequences. The Craven Group of CCP(UK) is just one of 30 offering help in England and Wales.

Janet Raine

AGE
Concern

NORTH CRAVEN

*Advice and information for
older people and their carers*

CHEAPSIDE, SETTLE BD24 9EW

Tel: 01729 823066

01729 825669

Registered Charity number: 700054

BETHEL NEWS

Sunday Services as normal. 11.00 a.m. and 6.30 p.m.
Weekdays – see notice board.

Special congratulations to Alan and Ruth Woodhouse on the birth of Wadeson John, born 25th March, a brother for Emily and Nelson.

Also congratulations to Joanne Coates on completing a degree at Sheffield Hallam University, where she has been studying for a BA (Hons) in International Tourism Management. During her third year she was given the opportunity to work at the Royal Pacific Resort, a Loews Hotel, at Universal Orlando, Florida for twelve months. As a result of her dedication and hard work during this time, she was nominated for a national award, for excelling in industry. After a visit to London with the other nine finalists, Joanne was fortunate to win one of the two places on board a catering forum in June.

Congratulations also go to Stephen Whitaker on completing his GNVC modern apprenticeship, light vehicle mechanic, at Lancaster Training Centre. He is employed by A.I. Harrison & Co. on the Industrial Unit at High Bentham.

Rug Making

Experience the Art of Traditional

Hooky & Proddy

at Clapham Village Hall

on Sunday, 18th July

10.00 a.m. – 4.00 p.m.

Display of work, crafts for sale, plus demonstrations and a chance to 'have-a-go' yourself at these traditional methods of rug making.

£2.50 entrance includes tea/coffee.

Accompanied children free

Everyone welcome

Arbutus
Country
Guest House



offer a discount to Friends
and Relations of locals

See Jackie or David for details

RIVERSIDE, CLAPHAM

Tel: 015242 51240

INGLEBOROUGH HALL OUTDOOR EDUCATION CENTRE, CLAPHAM

Coffee Morning & Cake Stall

A Coffee Morning and Cake Stall will be held at Ingleborough Hall on Wednesday, 4th August, starting at 10.00 a.m., with the opportunity for visitors to look around this impressive building. **Admission £1.00.**

Your contributions to the cake stall would be much appreciated. Proceeds from this event will go towards financing the Christmas Lunch for the over 65's in the Clapham area which will be held in December.

This year we are hoping that the Coffee Morning will also be a reunion for ex staff and children who have lived and worked at Ingleborough Hall over the years.

CLAPHAM PLAYGROUP

As a contribution to the festival Clapham Community Playgroup came up with the idea of 'Tom Skellett's Sovereign'. Twenty-one bread rolls were baked with coins inside them; twenty contained 5p, 20p, and 50p coins, one contained a gold sovereign worth £95. Raffle tickets were sold for £1 and the first twenty-one numbers drawn at the end of each day got the chance to open a bun. The 'legend of Tom Skellett' was included at the back of the festival programme, which explained why a gold sovereign came to be hidden inside a bun!

Saturday's hidden sovereign, dated 1878, (value £95) was won by Stuart Currie of Settle.

Sunday's hidden sovereign, dated 2004, (value £75) was won by Andrew Wildman of Clapham.

The stall raised £184.00 for the festival fund.

A big thank you to everyone who supported the stall by buying tickets and most of all to the playgroup mothers and fathers who spent time preparing for running the stall and over the festival weekend.

Jo Williams (Chair)

Local Food for Local People

GROWING WITH GRACE
CLAPHAM NURSERIES

offers an extensive range of organic vegetable & fruit bags delivered to your door every week

Tel: Sue on 015242 51723

**Come & visit our Organic Shop
Over 2 acres of greenhouses
growing organic produce**

www.growingwithgrace.co.uk



THE STREET MARKET

The Street Market will be held on Saturday, 24th July, and donations of anything to sell will be most welcome. You can contact the following people if you have items you wish to donate.

Cakes:	Liz Mason (51319)
Books:	Heather Pearce (51071)
Glass/pottery:	Margaret Bullock (51451)
Household linen:	Jean Cloughton (51491)
Tombola:	Eileen Plumridge (51486)
Plants:	Elga Balmford (51324)
Jam:	Valerie Potter (51628)
Raffle prizes:	Vesta Walton (51685)

White Elephant/bric-a-brac: or any further information please contact Jean Cloughton (51491)

The Newsletter Committee are running a stall at the Street Market to raise funds towards production costs and would be very grateful for any old Videos, CDs, Tapes and DVDs.

These can be left at:

Peter Ings at Croft Cottage
Chrissy Bell at Gildersbank or
Ray Hull at Park View Cottage

Craft & Table Top Sale

will be held on Sunday, 20th June
at Clapham Village Hall
from 10.00 a.m. to 3.00 p.m.

Light refreshments available including bacon
butties and pie & peas

Admission free

A few stalls are still available – ring 51492

Clapham cum Newby with Keasden Parish Council

A clerk is required for the above Council. This is a Part-time, paid position. For further details ring Teddy Dawson (42294) or Eileen Plumridge (51486)

Ruth A. Woodhouse ✱ Professional Florist ✱

*available for
Weddings, Funerals, Special
Occasions and Demonstrations*

**FOUNDRY COTTAGE
FLYING HORSESHOE COTTAGES,
CLAPHAM, via LANCASTER LA2 8ES**

Telephone: 015242 51157

WILDLIFE IN CLAPHAM

MARCH A large flock of Fieldfares were seen at Ingleborough Hall on the 25th. One Peregrine was seen flying over the Nature Trail and Ingleborough Hall and two Wheatears were seen at Clapham bottoms on the 26th. Lapwings, Curlews, Redshanks and Oystercatchers have all returned back to the local area. Another species which is now being seen moving through the local area to their moorland breeding grounds is the Meadow pipit, large flocks of which were seen in the local area at the end of March. One Kingfisher was seen by the River Wenning at Clapham Station; four Siskins were seen flying north along the old railway line near Nutta Farm; and one large white butterfly was seen flying around a garden near Bridge Cottage; one Snipe was seen drumming over Hardacre Moss all on the 28th.

APRIL On the 2nd – one Great spotted woodpecker was seen chiselling out a nest hole on the Nature Trail; eighteen Wheatears were seen on Ingleborough and the lower slopes of Ingleborough; one Chiffchaff was seen on the Nature Trail. One Tawny owl was seen and two male and one female Tawny owls were heard calling around the Crina Bottom Farm area on the 3rd; one male Woodcock was seen flying over Crina Bottom plantation. One Golden plover was seen with a large flock of Lapwings at Crook Beck on the 4th. The first Willow warbler for the spring was heard singing near Nutta farm; and three Sand martins were seen feeding over the River Wenning at Clapham Station on the 8th. One Snipe was seen at

Meldingscale farm; just outside the local area a Hoopoe was found at Eldroth village on the 10th. Ten Willow warblers were seen and heard calling around the local area; a flock of eight Sand Martins were seen feeding over Crook Beck at Calterber bridge; the first Swallow of the spring was seen flying over Clapham; one Merlin was seen chasing Meadow pipits over Meldingscale farm; two Linnets were seen at Lawsings Farm on the 12th. Three male Stonechats were seen at Hardacre Moss and two male and one female Stonechats were seen at Newby Moor on the 14th.

MAY on the 2nd – four Swifts were seen flying over Clapham; one male Whinchat was seen at Hardacre Moss; one Cuckoo was heard calling from the Green close area; one Grasshopper warbler was heard doing its reeling song at Hardacre Moss; five Buzzards were seen circling over Ingleborough Hall on the 7th. Two Garden warblers were seen on the Nature trail. Three male Redstarts and one Spotted flycatcher were at Trow gill. Six Dotterel were seen on the summit of Ingleborough. One winged tagged Red Kite was seen flying north on the Horton in Ribblesdale side of the hill. One Wood warbler was heard calling on the Nature Trail. There are two pairs of Stonechats breeding at Hardacre Moss and one pair of Stonechats breeding at Newby Moor. Two male Sedge Warblers are singing at Hardacre Moss and two male Sedge Warblers are singing at Newby Moor, all the above were seen on the 11th. On the 16th, Seventeen Sedge warblers were seen and heard singing on Newby moor and Hardacre moss and one Sedge Warbler was seen singing at Meldingscale Farm; one Lesser Whitethroat was seen at Newby Moor; one Lesser Whitethroat at Meldingscale Farm; one male Redstart was seen by Laithebutt Lane near Newby and one Redstart was heard singing at Calterber bridge and Simon and Audrey heard a Cuckoo calling near Trow gill; a pair of Spotted Flycatchers have returned to Arbutus House. One Hummingbird Hawkmoth was seen at Ingleborough Hall on the 18th. Two pairs of Redshanks are breeding at Meldingscale Farm. One pair have at least two chicks. These were seen on the 20th.

Records supplied by Tim of Smithy Cottage

MELDINGSSCALE

Locally produced
ORGANIC BEEF

delivered to your door
or collect from the farm

Tel: 015242 51345

e-mail: meldingscale@hotmail.com

ORGANICS

This Free Newsletter aims to keep everyone in Clapham, Keasden and Newby in touch with what is happening in our community. It does, however, cost a not insignificant amount to produce, and advertising is a very necessary aid to the finances.

For Advertising your products and services, please contact Ray Hull on 015242 51492

Articles, News and Ideas PLEASE! for the next issue by **25th July, 2004** to the Village Shop, Chrissie Bell, Sylvia Haxell, Ray Hull or David Sharrod.

Articles submitted but not included in the present publication will be put in future newsletters.