

CLAPHAM & DISTRICT NEWSLETTER



Number 33, February, 2005

JANUARY STORMS WREAK HAVOC

Early in the month Clapham village and the surrounding area were hit by ferocious winds and heavy rain, the worst weather experienced for many years. The first storm hit overnight on Friday 7th and was preceded by a day of heavy rain. Indeed, four inches of rain had fallen that week.

The second storm was four days later on the night of Tuesday 11th. Two days and nights of high winds caused much damage and discomfort. Falling trees caused most of the damage: about two hundred and fifty are estimated to have been brought down in the area. As well as this, other trees lost branches, chimney pots were toppled, greenhouses were smashed and roofs were damaged. Luckily no dwellings were badly damaged and there were no injuries.

Ingleborough Estate lost a lot of trees, some of which caused damage as they fell. The pipe to the two ram pumps located just upstream from the Lake was completely demolished, cutting off the water supply to Flatts Farm buildings and house. Fortunately this supply was replaced with an emergency supply from Little Ingleborough. The other pipe, which supplies water to pasture, will have to be repaired by the spring and will be a long and expensive job involving the removal of a large tree from where it has fallen into the Beck and the restoration of about 30 metres of large cast iron pipe. Both the pipe and the ram pumps date from 1921.

A number of local farmers were greatly inconvenienced. The electricity went off at Crina Bottom Farm at 6.45 am on Saturday, 8th January – half way

through milking. The milk had to be thrown away as it couldn't be properly cooled. Power wasn't restored until five days later – on Thursday 13th at 10.00 pm, so a generator had to be used to cool the milk while the family were forced to move out as they were

without heat and light. At Nutta Farm a tree branch brought down the electricity supply wire on the Saturday morning and, like Crina Bottom, the supply was not restored until five days later. Trying times.

Those living on The Green awoke to find their road completely blocked by a fallen tree which was swiftly towed out of the way so that the usual milk deliveries could be commenced! There were many lucky escapes: householders near the Post Office were lucky when a tree fell on to the road, but missed

several nearby buildings. Gildersbank householders were also lucky when a heavy bough broke off a very tall beech tree but fell into a garden, missing buildings and walls. Not so lucky was another house in Gildersbank which suffered a hole in its roof and some water damage in the attic. At the top of the village an old greenhouse was smashed and will have to be replaced.

Most of the felled and damaged trees have now been cleared, insurance claims are being pursued by those unlucky enough to have suffered damage, and everyone is hoping that we don't have too many more storms of such ferocity!



More pictures on pages 4-5

CLAPHAM-CUM-NEWBY PARISH COUNCIL

Report of the meeting of Tuesday, 11th January, 2005

Six Councillors were present at the meeting with apologies from Mr T Lund, along with the Clerk and three members of the public.

Taking items from the public first, Janet Monaghan from Clapham Community Playgroup gave some background to the group and its request for Parish Council support to help buy new equipment. The Council later agreed to give the group £100 towards new equipment.

Reporting on matters arising from previous meetings, the Clerk confirmed that the appeal against the planning application to change the use of the Flying Horseshoe to housing has been dismissed. The third light in Newby is still not repaired. The Council is trying to find an alternative electrician for repairs. With regard to the Community Warden idea, funding confirmation and therefore full details are still awaited; the Council will await these before discussing the idea further. Jean Davey reported that there has been less activity at the caravan repairers in Newby recently, an update on the legal situation is still awaited. On checking the Estate request for a contribution to grass cutting, this was made in 2003 as a one-off, and it was agreed to stick to that decision.

The Clerk had checked the situation over the Countryside Agency taxi voucher grant and it seems the scheme will not be going ahead now because of several factors. The Council therefore agreed to pay back the grant. The grant has now been received from the Forest of Bowland to refurbish the old West Riding signs.

There were no reports from Councillors.

The Parish Precept for 2005/2006 was set at the same rate as this year – £3,000.

There were several planning applications to consider, which the Council had no comments on:

- Retention of static caravan at Giffords, Keasden;
- increasing height of garage to form bedroom, Stoney Croft, Newby;
- outline permission for a dwelling adjacent to The Shieling, Newby;
- rear and front extensions at Greenstead, Newby;
- conversion of barn to workspace and living space, Greenhill Barn, Oaklands Farm.

Two plans had been granted permission;

- continued use of Post Office & Cottage, Clapham;
- temporary use of land for warden's caravan on land at Flying Horseshoe.

And one plan was refused – steel framed agricultural building at the Goat Gap Inn.

Two applications for tree works have been unopposed by the National Park – removal of low branches and basal growth to several trees along Clapham Beck which can be done on an annual basis and works to an oak tree adjacent to Church bridge.

The finance statement was received. The new Clerk's salary was confirmed and agreed for payment.

Other items raised included several drains blocked and other items arising from recent flooding and a request to be made to the Village Hall Committee about some lighting round the corner as there had been comments received recently on tripping.

The next meetings will be on Tuesday, 15 March, and then Tuesday, 10 May which will also be the Annual Parish Meeting.

Craven District Council

SPRING AREA FORUM MEETING

at Bentham Town Hall on Thursday, 10th March

Further information from

Laura Richardson 01756 706211

RIVERBANK HOMOEOPATHIC PRACTICE

Andrea Peach, Dl.Hom. Hons, FBIH

Professional homoeopathic practitioner
treating all physical, mental and
emotional problems

All consultations are in strict confidence.

Tel: 015242 51836

BROCKLANDS Woodland Burial

Environmentally-friendly burials
open to people of all faiths

Each grave has a tree planted on it

Peaceful and secluded setting

Ask for a leaflet or come and visit

Julia and Chris Weston, Rathmell

Tel: 01729 840102

www.brocklands.co.uk



CHURCH NEWS

February 9th ASH WEDNESDAY Service of Holy Communion at Clapham Church at 7.00p.m.

February 16th LENT MEETINGS begin at the Vicarage at 7.30p.m. Later venues to be arranged. Theme – the study of the Bishop's Charge and the Sermon on the Mount.

Visiting preachers will be in Clapham Church every Sunday during Lent, including Bishop David Young, Rev. David Briggs, Canon Paul Slater, Sam Randall and Rev Phillip Greenhalgh. On MOTHERING SUNDAY there will be a special family service and Baptism.

KEASDEN CHURCH – please note that from 6th February, and every 1st Sunday in the month the service will be at 11.00a.m. Other services at the usual time.

On Saturday 12th March there will be a FOLK EVENING in Clapham Village Hall, with a variety of folk music by Rev. Phillip Greenhalgh and other folk singers. Hot supper and bar facilities. Tickets from P.C.C. members £7 (under 16s £4)

March 1 3th Holy Communion at Clapham Church at 11.00a.m. and at 6.30p.m. at AUSTWICK there will be a Songs of Praise, a service of favourite hymns.

March 14th The Church Annual General Meeting. Open to all the people in the parish at 7.30p.m. in Clapham School.

EASTER

Holy Week Monday, Tuesday and Wednesday at 7.30p.m. Holy Communion in Clapham Church.

Maundy Thursday, Austwick at 7.30p.m.

Good Friday, Clapham at 10.00a.m.

Easter Day Holy Communion at Clapham at 11.00a.m. followed by coffee and refreshments.

Austwick – Holy Communion at 9.30a.m.

Keasden – Holy Communion at 2.00p.m.

Eldroth – Holy Communion at 7.00p.m.

The Vicar writes . . .

The Beatitudes Matthew 5: v3-10

Christianity is essentially a 'lifestyle' religion. It is as much about what and who we are, as about what we say or believe. The Scriptures are not primarily books of doctrine, but rather stories of how the revelation of God has made an impact on and shaped the lives of those who have heard its message.

We live in a rapidly changing world. Increasingly, ours is a culture where people are less interested in religious activity than in 'spirituality' and more interested in 'resources for living' than in doctrines or creeds. In a climate where lifestyle and well-being are major preoccupations and where values and codes are judged by whether they work, the challenge for the Church is twofold: to equip its members more wholly to live their faith; and to demonstrate to those outside the Church that a knowledge of God makes sense of the whole of life.

The Beatitudes, which will be our study for Lent, focus our minds on what makes us truly happy. These eight short verses are a little mine of resources for living. They call us to 'live the Kingdom – now' and to encounter God's blessings as we do this. I look forward to sharing with you all during Lent.

Your friend and Vicar, Ian

Clapham Park Association

We have recently purchased new goal nets and a replacement net for the climbing frame which will be installed by Springtime. Part of the cost of these has been covered by a grant from the Community Chest Fund.

We also have a 'springer' for the infants to play on and this will be installed as soon as weather permits. We also have a quantity of safety matting which we intend to lay under the climbing frame.

AGE
Concern

NORTH CRAVEN

*Advice and information for
older people and their carers*

CHEAPSIDE, SETTLE BD24 9EW

Tel: 01729 823066

01729 825669

Registered Charity number: 700054

Arbutus
Country
Guest House



offer a discount to Friends
and Relations of locals
See Jackie or David for details

RIVERSIDE, CLAPHAM

Tel: 015242 51240



TIMBERWORKS

TIMBER MERCHANT

Joinery Contractor & Manufacturer

Open to Trade and Public for all your timber needs

Specialists in Decking, Fencing, Garden Furniture, Playground equipment, etc.

**CUTTING
SERVICE**

Firewood now on sale – ideal for woodburners and open fires.

Free quotations and site visit

Unit 3, Sowarth Industrial Estate, Settle

Tel: 0729 825559

Open Mon-Fri 8 am to 5 pm Sat 8.30 to 1 pm

Fisher Wrathall

**ESTATE AGENTS
CHARTERED VALUATION SURVEYORS**

We provide advice on all types of property transactions including the sale of rural properties and the development of Land and Buildings

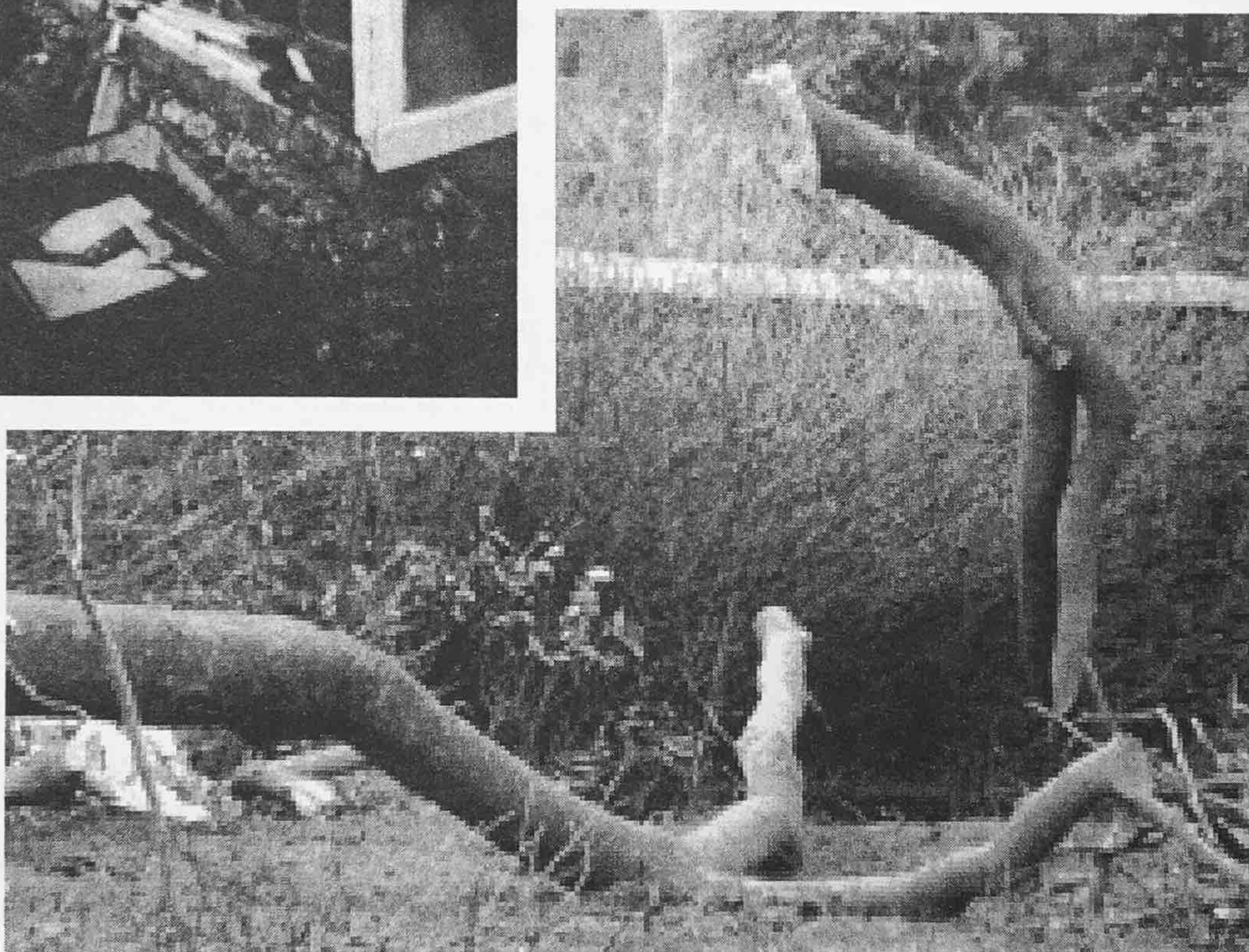
Lancaster (01524) 68822

Morecambe (01524) 417272

www.fisherwrathall.co.uk

e-mail: property@fisherwrathall.co.uk

**The Old Warehouse, Castle Hill, Lancaster
17 Princes Crescent, Morecambe**



HARRISON & CROSS LTD.

ELECTRICAL & REFRIGERATION ENGINEERS

Our electrical retail shop is now open for:
Chest freezers, Upright freezers, Larder fridges,
Washing machines, Tumble dryers, Dish washers
and Microwaves.

We are NICEIC approved Electrical Contractors

We do partial or complete rewires, electrical checks
on existing installations.

Phone/Fax: 01729 823423

Unit 6, Sidings Industrial Estate, Settle

Free delivery up to 20 miles.

Thomas Redhead

Clapham's Solid Fuel & LPG gas supplier
supports British coal

Six grades & sizes of coal

from £5.00 per 50kg bag – including V.A.T.

20 different smokeless fuels

from £6.00 per 50kg bag – including V.A.T.

Bottled gas delivered to your door

QUALITY, RELIABILITY & CHOICE

Top up service available

015242 41626 or 41212

Congratulations . . .

you've just won a luxury holiday for two'

Does this sound familiar? There seem to be more and more of these calls today, either at inconvenient moments or just making people very annoyed when they realise they are being addressed by a recorded voice! They can also be very confusing and worrying for some people.

Well, help is available. You can get rid of these unwanted calls by registering with the Telephone Preference Service which should stop the calls getting through to your number and should also get rid of worrying silent calls.

However, you will also cut off all unsolicited calls from companies wanting to market their products, not just the ones offering you a prize of some sort.

Registering is easy, you can do it by telephone, the number to call is **0800 398 893** which is a free call. Or, if you have a computer, you can do it online, go to **www.tpsonline.org.uk**. In both cases it only takes a few minutes and is easy to do.

Once you've registered you can pick up your phone, comfortable in the knowledge that it won't be an annoying recorded message!

PS There's also a Fax Preference Service to stop unsolicited faxes clogging up your lines. You can register on **0845 0700702**.

C.M. Bell

RAINBOW TAI-CHI, CHI KUNG

Classes have started recently in the Village Hall to teach methods of opening up awareness, both physical and mental, of the energy which flows through us and around us. By practising a series of gentle movements which are accessible to almost everyone, regardless of age, we can rediscover this energy. If you are interested and would like further information, call Heather Cardwell on 01729 840393.

Local Food for Local People

**GROWING WITH GRACE
CLAPHAM NURSERIES**

offers an extensive range of organic vegetable & fruit bags delivered to your door every week

Tel: Sue on 015242 51723

**Come & visit our Organic Shop
Over 2 acres of greenhouses
growing organic produce**

www.growingwithgrace.co.uk



WOMEN'S INSTITUTE

Clapham Women's Institute meets on the second Wednesday of each month at 7.30pm in the Village Hall. The group includes members from Eldroth, Newby, Newby Cote and Cold Cotes. New members, visitors and friends are always welcome. For more information telephone Moira Ings on 51316.

Forthcoming programme:

February 9th: *The Flying Vicar*

Speaker: Rev. Ian Greenhalgh of Austwick

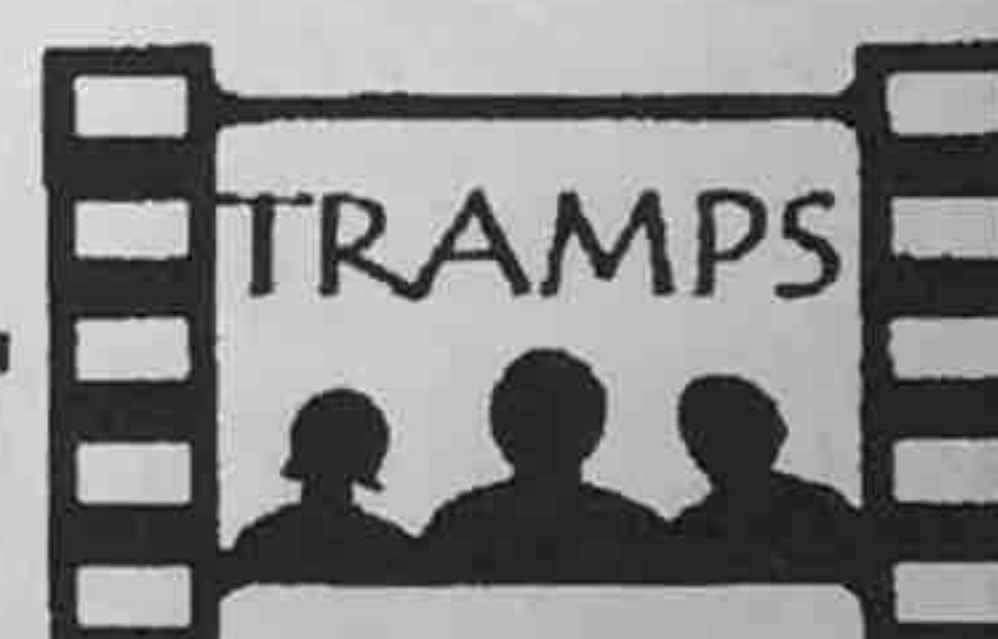
March 9th: *Poetry Night*. Members bring favourite poems.

Clapham Development Association

Pictorial history and bygone Clapham

We are appealing to the residents of Clapham who have memories and recollections or old photographs of the village that we can incorporate in the form of a booklet which would be available to the residents and general public. Any contributions however small would be gratefully appreciated. All photographs and documents would be returned.

Please contact Martin at the New inn or David at Arbutus guest house.



presents on its cinema-size screen

**Jude Law • Nicole Kidman
Renee Zellweger • Donald Sutherland**

in

COLD MOUNTAIN (Cert 15)

at 7.30pm

on Friday, 11th February at Settle Victoria Hall
and Saturday, 12th February at
Clapham Village Hall

Admission £3.50

Thank you – I would like to say a very big thank you to everyone who sent cards and good wishes following my accident, also many thanks to all the offers of help given to Christine, it is very much appreciated.

Martin Wilcock

NEIGHBOURHOOD WATCH

Craven Neighbourhood Watch Association's newsletter – now called Watch Power – is produced three times a year. Thirteen copies of the most recent issue (3/2004) were circulated around the village in December. Some residents still never see a copy so I urge you to pass on your copy to the next occupied property on the list after reading it.

Members of the scheme are also reminded that they should telephone the Police if they see any suspicious or criminal activity:

For emergencies (crimes in progress) – ring 999

For suspicious incidents – ring 0845 6060247

The second number is a new telephone number and is charged at the local call rate. If possible, write down a description of what you have seen, the time and place, and a description of the people and vehicles involved.

I have a selection of advisory crime-prevention leaflets, most of which are produced by the Home Office and are available to you free of charge. These include:

Coded for Keeps – advice on marking your valuable property – UV marker pens available.

How to beat the bogus caller

Doorstep selling – your rights (a NYCC publication)

Keep the Burglar out of Business – a CD ROM disc produced by the Craven Crime Prevention Partnership – requires a computer and monitor to view.

If you would like any of these please telephone me and I will bring them to your door!

Bill Summers

Clapham NW Co-ordinator. Tel. 51655

TSUNAMI APPEAL

Sunday 20th February.

Lunch in the Village Hall. 2 courses plus coffee

£7 per person, £6 for under 16's

Tickets from Rosie Harrison. Tel. 51492



**AUCTIONEERS, ESTATE AGENTS,
SURVEYORS & VALUERS**

3 High Street, Settle BD24 9EX

Tel: 01729 825252

www.graveson.uk.com

WEA

The Workers Education Association Annual Meeting will be on Tuesday, April 15th at 7.00p.m. in Clapham School, followed by a talk by Revd. Ian Greenhalgh on his experiences in 20 years as an R.A.F. Chaplain. At this meeting, the subject of next autumn's class will be arranged. Everyone welcome.

BETHEL NEWS

All weekly meetings have now re-started. Children's clubs run during school term only.

Please note that Ladies afternoon meetings are now at 2.30p.m.

Feb. 3rd Senior Citizens – John & Tina Gladden.

Feb. 17th Ladies Meeting – Special speaker.

Feb. 24th Ladies Meeting – Mrs B Smith of Morecambe.

March 3rd Senior Citizens – John Mollitt of Ingleton.

March 17th Ladies Meeting – Mrs Tina Gladden.

March 31st Ladies Coffee Evening – Special speaker.

If you require any information or help please contact 51265 or 51363

Bairstow Eves
Countrywide

An independently owned and operated part of
The Countrywide Estate Agents Group
The UK's largest estate agency group

LOCAL FOCUS – NATIONAL REACH

20 Main Street

BENTHAM

LA2 7HL

015242 62044

bentham@bairstoweves.co.uk

2 Church Street

SETTLE

BD24 9JE

01729 824292

settle@bairstoweves.co.uk

Linda & John

welcome you to

**CLAPHAM VILLAGE STORE
& POST OFFICE**

Monday – Friday 0700–1750

Saturday 0730–1600

Sunday 0900–1200

Post Office Hours:

Monday – Friday 0900–1730

Saturday 0900–1230

Telephone: 015242 51212

Taxibus – Stationlink

Changes to the North Craven
Taxibus and Settle Area
Stationlink Timetable



by Lin Barrington of Bentham Community Transport

Since the 4th of January this year, the Taxibus has been operating to a new timetable (a copy of the timetable is enclosed with this newsletter, if you would like further copies, please contact us on 015242 62753).

As you will see, the main change to the timetable is from mid-morning to mid-afternoon from Monday to Friday, when we will be operating a 'dial-a-ride' type service. Journeys can be made within and between Clapham, Clapham Station, Newby, Ingleton, Cold Cotes, Masongill, Westhouse, Thornton in Lonsdale, Low Bentham and High Bentham. We can pick you up and drop you off anywhere within these areas, but you have to book the journey in advance by calling us on 62753, or dropping in to our office.

On Saturdays the service remains timetabled all day so there is no 'dial-a-ride' time, and there are four buses from Clapham to Bentham and back, and the same number to Settle and back.

The new timetable incorporates a pick up at Settle School Bus Park on schooldays just after 16.30 each day; we are hoping that this will be of use to students at Settle College who wish to stay behind for after-College activities.

We change the timetable every so often in consultation with North Yorkshire County Council, who fund the service. The reason for the changes is to try to find ways of increasing passenger numbers so that the service will be viable when the grant funding obtained by the County Council to set it up runs out in March 2006.

If you would like to use the taxibus, but are unclear about how the new timetable works, please give us a ring and we will do our best to help you.

So if you want any information, or if you want to know more about the minibus hire service for local voluntary groups and car scheme we run, please give us a ring on 015242 62753. Thank you.

P.S. We're always looking out for more volunteer drivers to bring patients in to Bentham or Ingleton surgery!

WHIST DRIVES

Whist Drives will be held at Clapham Village Hall on February 11th and in the primary school on February 18th. Back in the Village Hall as usual for those on February 25th, March 11th, 18th and 25th, and April 8th.

All commence at 7.30p.m. Admission is £1.50 Proceeds for charity.

No Smoking – What an Issue!

I was brought up in an era when smoking was the 'cool' thing to do. I mustn't have been 'cool' because I didn't participate. My earliest recollection of smoking was catching the trolley bus to school. I would dash upstairs to get a front seat. Behind me all I could hear were smokers coughing and spitting! Not quite the glamorous image of the advertising posters. My neurosis must stem from those early days of being an outcast as a non smoker, not quite belonging to the 'club'.

When we moved to Clapham after buying the New Inn in 1987, a decision was made to have a non smoking restaurant area. From the outset this was well received. Our decision was prompted at the time by the eccentric proprietor of our namesake in Apple-treewick, the New Inn. Signs on the premises there read 'Will gentlemen please remove their hats when entering the building and No Smoking'.

In recent years we introduced a no smoking policy in our lounge bar area. Martin, our barman, encouraged smokers to move away from the bar by removing the ashtrays. In early January of this year a 'No smoking at the bar' notice appears to have solved the problem. Our guests can now enjoy a drink in several smoke free areas in the hotel and bar.

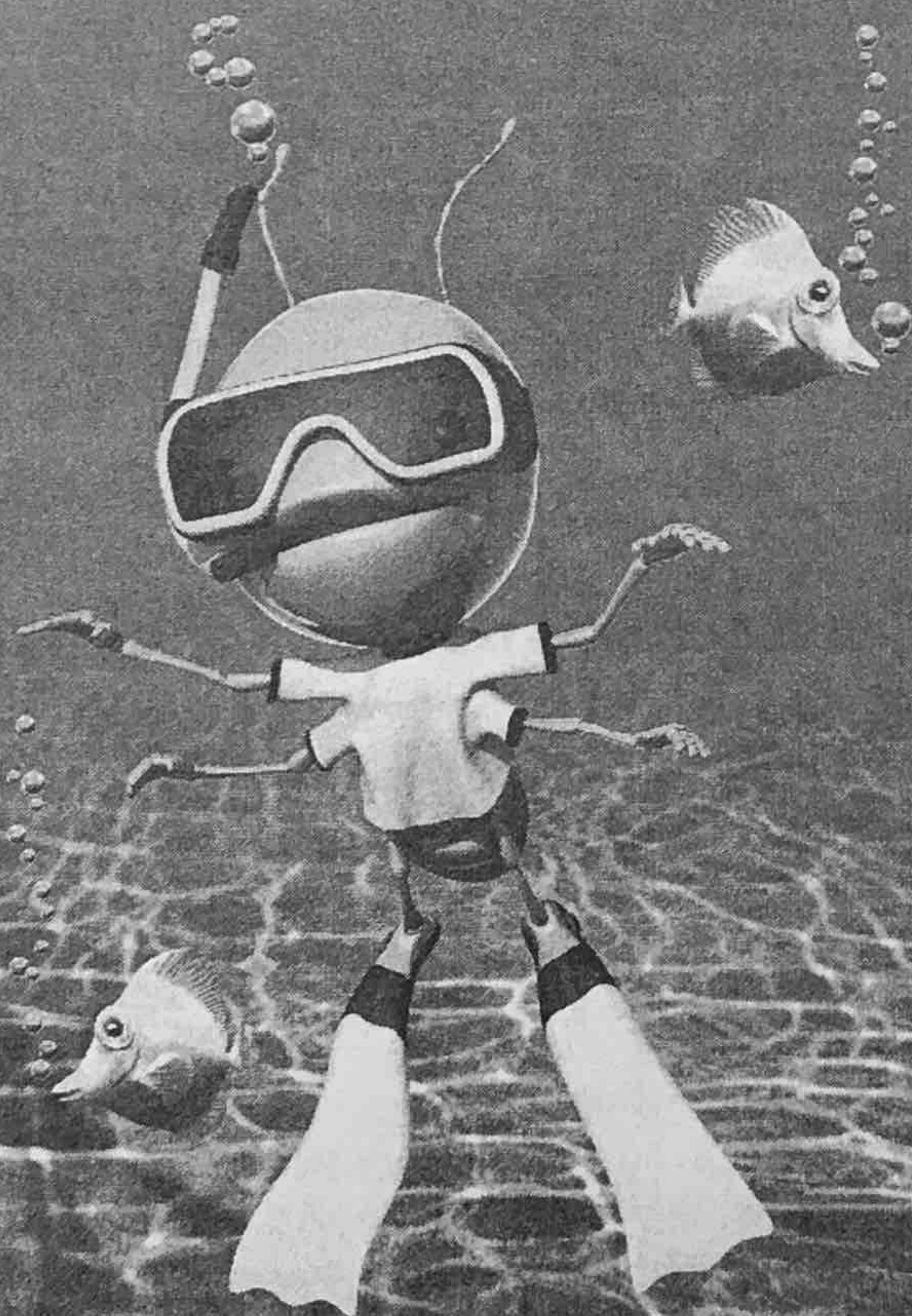
On a purely personal note . . . the Government knows how harmful smoking is to the health and wellbeing of the nation and what a burden this poses for the National Health Service. Surely a ban on the importation of tobacco and manufacture of cigarettes would remove many problems. Smoking would then not be an issue. – Problem solved!

Keith Mannion

CLAPHAM READING GROUP

Clapham Reading Group was formed in May 2004 and at present has eight members. We meet every two months and take it in turns to be the host. At each meeting we choose one or more books to read and then discuss our ideas and opinions about them at the next meeting. We also talk about theatre, film, art or other related subjects brought up by members, but we are not highbrow or intellectual! We find the evenings relaxing and enjoyable and as well as the specific books discussed and chosen we come away with lots of ideas for other things to read, see, visit and explore. Our next meeting is on Tuesday, 8th February and new members would be very welcome. If you are interested please ring Sue Stark on 51684 or Brenda Pearce on 51816

Dive into your local Post Office®



0% commission
on over 50 foreign currencies

- Great exchange rates
- Commission-free buy-back service†

**Kids go free* with
our travel insurance**

- Up to 50% cheaper** than some
high street travel agents
- Instant cover

Ask at your local Post Office® for full details

**Clapham Village Store
& Post Office**
Telephone 51212

POST
OFFICE

**For the little things that make
the big things happen™**



† Excludes some small denominations. Proof of purchase required for sterling travellers cheques and may be required in selected branches for currency buy-back service. * Free cover for dependent children under 18 when travelling with a parent, grandparent, uncle, aunt or legal guardian who has travel insurance from the Post Office®. ** Based on a single trip of 15 days to Europe for two adults and three children. This policy is arranged by Aon Limited for Post Office Insurance Limited. Registered address: Fortis House, Tollgate, Eastleigh, Hampshire SO53 3YA. Registered number 354568 England. Fortis Insurance Limited is a member of the General Insurance Standards Council.

WILDLIFE IN CLAPHAM

Following on from last month, Waxwing hung around the area for a while but the last report was of 5 flying towards Austwick December 19th – or perhaps people stopped noticing them. Sadly one of the Short-eared Owls described hunting over Newby Moor was killed by a vehicle January 9th. However, Stonechat seem to have spent the whole winter on the moors – certainly 4 pair on November 28th and at least 2 January 24th. Winter oddities include Chiffchaff at Ingleborough hall December 17th and what was a Golden Plover doing on top of Ingleborough in the snows of December 19th?

Recent local muck-spreading has attracted flocks of more than a thousand Fieldfare and Redwing, and large numbers of Siskin and Redpoll have spent the winter around Meldingscale farm. The Brambling at the Flying Horseshoe (*not sure what to call it now*) have been 30 strong at times.

Gales, rain and cold may cause us disruption, but birds are not too bothered by bad weather – as long as they can get enough food. The exception is ice, when insects and seeds can't be got at. Feeding birds in your garden (or windowbox!) significantly helps winter survival rates – and goes some way to counter-acting their dismal breeding success in our gardens, compared with a woodland for example.

Anyone who finds interest in these articles there is an excellent new local website www.cravenbirds.co.uk

Records from Tim, Smithy Cottage

Clapham Primary School

60/40 Club

Reminder to all parents and grandparents and everyone else who reads this! If you have not joined up for 2005 please do so now by sending a cheque, for £12 per ticket (you can buy as many tickets as you like) payable to 'Clapham PTA', to J. Marshall c.o. Clapham Primary School, with your address. Please act now and send your money before the 1st draw of the year at the end of January. Don't miss this easy and fun way for you to help your school.

Quiz Night

Friday, 18th February at 7.00 p.m.

In Clapham Village Hall

Tickets £20 for a team of four or £5 each.

Tickets available from Karen Allsopp Tel. 42622

Floodlighting of the waterfall

People were delighted with the floodlighting of the waterfall at the top of the village over the Christmas period. In the darkness a pair of lamps on a tripod threw a bright swathe of light across the fall. Thanks are due to Dr Farrer for this dramatic tableau. The electricity for the floodlighting was provided in an environmentally friendly way through use of the Estate's own hydroelectric plant. Apparently all that rain can serve a very useful purpose! It is hoped this can be repeated in future years.

MELDINGSSCALE

Locally produced
ORGANIC BEEF
delivered to your door
or collect from the farm

Tel: 015242 51345

e-mail: meldingscale@hotmail.com

ORGANICS

Newsholme & Son

(Established 1950)

Electrical Engineers

STATION ROAD, CLAPHAM

Write or phone 015242 51383

Domestic • Agricultural Installations • Security Lighting and Burglar Alarms • Fire Alarm Systems • Additional Electrical Circuits • Faults • Breakdowns • Cooker and Night Store Heater Repairs.

No call-out charges, No VAT, Free estimates

This Free Newsletter aims to keep everyone in Clapham, Keasden and Newby in touch with what is happening in our community. It does, however, cost a not insignificant amount to produce, and advertising is a very necessary aid to the finances.

For Advertising your products and services, please contact Ray Hull on 015242 51492

Articles, News and Ideas PLEASE! for the next issue by **25th March, 2005** to the Village Shop, Chrissie Bell, Sylvia Haxell, Ray Hull or David Sharrod.

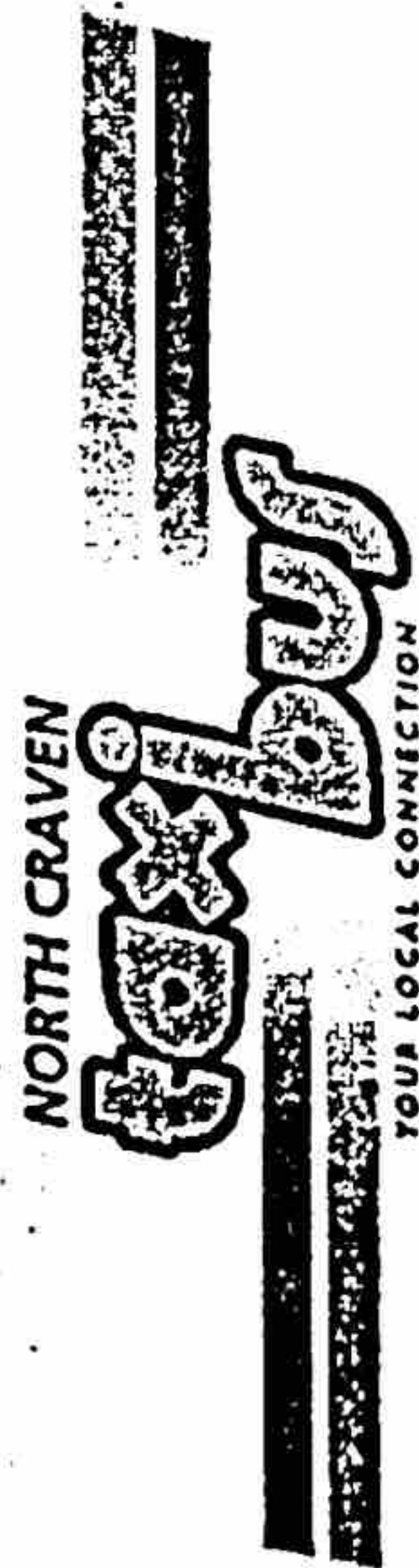
Articles submitted but not included in the present publication will be put in future newsletters.

bus times

for Settle Area

Stationlinks & North Craven Taxibus

from Tuesday 4 January 2005



Services operated by: -

Bentham Community Transport
8A Station Road
Bentham
Lancaster
LA2 7LF

Telephone 01524 262753

traveline
public transport info
0870 608 2608
yorkshire

NORTH CRAVEN TAXIBUS INCLUDING SETTLE AREA STATION LINK

NC1, NC2

Operated by Bentham Community Transport

Monday to Friday

Service No	NC2	NC1	NC1	NC1	NC1	NC1
High Bentham, School Hill	06400820	..	1701
High Bentham, Goodenber Road	..	0822	..	1703
High Bentham, Main Street	..	0824	1602	1705
Ingleton, Community Centre arrive	0650
Ingleton, Community Centre depart	0651
Newby, Lane End	0656
Clapham Village	07000833	1613	1714
Austwick	07050838	1618	1719
Felzor Lane End via Scar Top	..	0842	1622	1723
Lawkland	0710
Giggleswick Rail Station	1740	1800	..
Giggleswick, Four Lane Ends	07180846	1626	1727	1743R	1803	..
Giggleswick, Belle Hill	07200848	1628	1729	1745R	1805	..
Settle, Market Place	07220850	1630	1731	1747R	1807	..
Settle Rail Station	0724

Notes:

R Operates on request only

Funded by Rural Bus Challenge 2001 and operated on behalf of North Yorkshire County Council

NORTH CRAVEN TAXIBUS INCLUDING SETTLE AREA STATION LINK

NC1

Operated by Bentham Community Transport

Saturday

Service No	NC1	NC1	NC1	NC1	NC1	NC1
High Bentham, School Hill	0810	1701	..
High Bentham, Goodenber Road	0812	1703	..
High Bentham, Main Street	0814	1034	..	1534	1705	..
Clapham Village	0823	1043	..	1543	1714	..
Austwick	0828	1048	..	1548	1719	..
Felzor Lane End via Scar Top	0832	1052	..	1552	1723	..
Giggleswick Rail Station	1131	..	1740	1800
Giggleswick, Four Lane Ends	0836	1056	1134	1556	1727	1743R
Giggleswick, Belle Hill	0838	1058	1136	1558	1729	1745R
Settle, Market Place	0840	1100	1138	1600	1731	1747R

Notes:

R Operates on request only

Funded by Rural Bus Challenge 2001 and operated on behalf of North Yorkshire County Council

Additional Flexible Bus Services available with North Craven Taxibus

The North Craven Taxibus operates flexible bus services on Monday to Friday from 10am to 12 noon and from 12.30pm to 3.30pm. These operate like dial a ride services and don't follow a fixed time and route.

Journeys can be made within and between Low & High Bentham, Ingleton, Clapham and Clapham Station, *COLD COTES, NEWBY, MASONIC WRESTHOUSE, THAXTON IN, LONSDALE*

The Taxibus will only go to a pick up point if a booking has been received; it is not possible to flag it to stop on these journeys so you must remember to book your journey.

Booking is easy just pick up the phone and call Bentham Community Transport on 015242 62753 between 8.30am and 4pm Monday to Friday the day before you wish to travel, or up to 12 noon on the same day for afternoon journeys.

Whilst every care has been taken to ensure the information given is correct, North Yorkshire County Council or the operators cannot be held liable for the consequences of any inaccuracy, errors or omissions.



Passenger Transport Group, County Hall,
Northallerton DL7 8AH
Telephone 01609 785668

NORTH CRAVEN TAXIBUS INCLUDING SETTLE AREA STATION LINK

NCI

Operated by Bentham Community Transport

Monday to Friday

Notes	A	
Settle Rail Station	1907	
Settle, Market Place	0745 0850 1630 1909	
Giggleswick, Belle Hill	0747 0852 1637 1911	
Giggleswick, Four Lane Ends	0749 0854 1639 1913	
Giggleswick Rail Station	0752	
Lawkland	0802	1923R
Felzor Lane End via Scar Top	0858R1643R	
Austwick	0806 0902 1647 1926R	
Clapham Village	0811 0907 1652 1931R	
High Bentham, School Hill	0820 0916 1701	
High Bentham, Goodenber Road	0822 0918 1703	
High Bentham, Main Street	0824 0920 1705 1940R	

Note:
A Via Settle School Bus Park on Schooldays
R Operates on request only

Funded by Rural Bus Challenge 2001 and operated on behalf of North Yorkshire County Council

NORTH CRAVEN TAXIBUS INCLUDING SETTLE AREA STATION LINK

NCI

Operated by Bentham Community Transport

Saturday

Settle Rail Station	1900
Settle, Market Place	0845 1107 1145 1605 1902
Giggleswick, Belle Hill	0847 1109 1147 1607 1904
Giggleswick, Four Lane Ends	0849 1111 1149 1609 1906
Giggleswick Rail Station	0852 1114
Felzor Lane End via Scar Top	0858R 1153R1613R
Austwick	0902 1157 1617 1919R
Clapham Village	0907 1202 1622 1924R
High Bentham, School Hill	0916 1211
High Bentham, Goodenber Road	0918 1213
High Bentham, Main Street	0920 1225 1631 1933R

Note:
R Operates on request only

Funded by Rural Bus Challenge 2001 and operated on behalf of North Yorkshire County Council