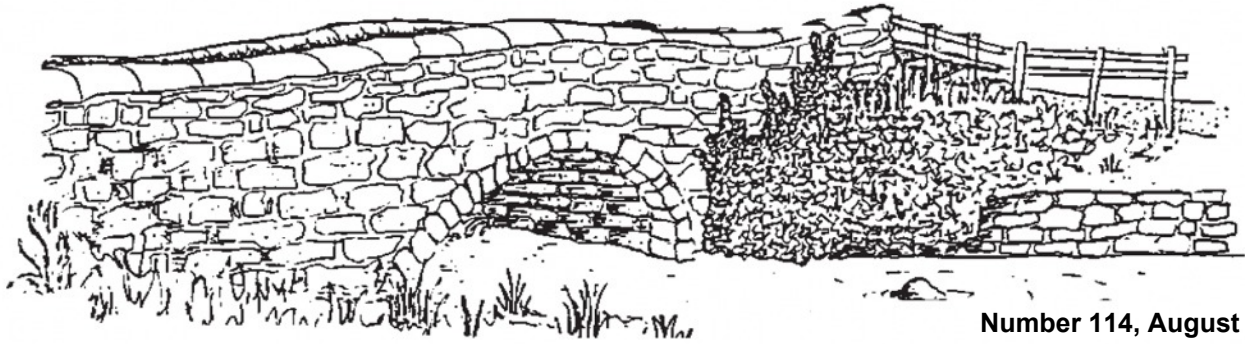


# CLAPHAM & DISTRICT NEWSLETTER



Number 114, August 2018

## Street Fair 2018

Gardeners yearned for rain for two months. Churchgoers prayed for it. Local farmers were spotted in the fields wearing nothing but wellies as they did ritual rain dances. Their wishes were granted. As the first stalls were erected for this year's market the first drops of rain fell but Clapham folk have discovered that skin is waterproof so everything went ahead as planned and the occasional shower did not spoil the day.

There is no wonder they look so well cared for when you realise that every owner also owns a polishing cloth and seems to enjoy using it.

It was good to see the school involved in the fun of the fair as they offered activities for children including a coconut shy.

In the village hall the usual dedicated team of ladies served refreshments made by numerous volunteers.



As always there was a lovely atmosphere on this special day as stallholders from numerous charities displayed the food and crafts which they had made and visitors enjoyed the entertainment provided by Dales Jam, The Batty Moss Buskers and The Flagcrackers of Craven, a mixed Morris team which danced energetically and noisily to the amusement of our residents and visitors who came from various parts of Britain and abroad. The CRO offered challenges to braver souls and there was a superb display of vintage cars and motor bikes in the car park.

The day before the big event there was not enough water in the beck to float a ping-pong ball but the duck race went ahead thanks to the ingenuity of our water engineers who created a channel and ran this classic race over a shorter course.

In the evening the village hall was full as large numbers of helpers enjoyed a superb supper and a free raffle accompanied by wine and intellectual conversation. It was certainly sophisticated talk on our table as we debated the arguments for and against *(Continued on page 20)*







# AIRE VALLEY

## Glass

### Job Done!



**PVC Doors**

**Windows**

**Composite & Stable Doors**

**Bi-Folding Doors**

**Sliding Sash Windows**

**Roofline**

A Family firm established over 35 years, we supply and install top quality windows and doors in a range of colours and Farrow & Ball finishes, as well as Solidor & Rockdoor composite doors, and machined timber Masterdor doors. Call us for a free quotation and no pushy salesmen

**origin**  
DOORS AND WINDOWS

PREMIUM  
INSTALLER  
**Solidor**

Trusted  
**ROCKDOOR**  
Installer.

**CELSIUS**  
SOLID ROOF

**masterdor**  
**craftsman**  
Precision engineered timber doors

Bridge Road, Sutton-in-Craven  
Keighley BD20 7ES

**01535 634788**

[enquiries@airevalleyglass.co.uk](mailto:enquiries@airevalleyglass.co.uk)

Dalesview Business Centre  
Old Road, Clapham LA2 8JH

**015242 51705**

[www.airevalleyglass.co.uk](http://www.airevalleyglass.co.uk)

## Church news

### John's Notes: It's never too late

"I'd like to have my child baptised, but I haven't been baptised myself - what can I do?" It's not unusual for me to find myself in this sort of conversation, and the obvious answer often works for the person concerned: "Perhaps you should think about being baptised with them." Following a conversation of this sort I once conducted a baptism for four generations of a family's women - first the great-grandmother, then the grandmother, then the mum, and then the baby daughter. And why not - it was great! And very meaningful and memorable for the family.

People's relationship with the Christian faith ebbs and flows, often in tandem with life events. When a baby comes into your life the awe and wonder of the birth prompts the desire for some sort of celebration, and many people, suddenly awake to the gravity of the responsibility of nurture are grateful for an occasion which invites the help and encouragement of others in the family and community. Baptism offers all that, and it can be the start of a person's new or renewed appreciation of the role of faith in their life.

The urge to find meaning in life is strong, certainly among our young, trying to build their identity and feeling that the material presented to them by youth marketing, Hollywood and social networking is never quite enough to fulfil all their desires. But people of all ages have unanswered questions, which some will keep searching for. The 'spirituality' shelves of high street bookshops are stacked to overflowing with titles offering succour, advice, self-help suggestions. A lot of this material draws on centuries of Christian practice - meditation and monasticism, healing prayer and iconography: all these are being rediscovered as helpful means towards understanding the inner life. 'Spiritual direction' - a one-to-one conversation of the heart with a wise and trusted other - is growing in popularity all the time.

When crisis hits - through an illness, or accident, the loss of a loved one - people rediscover prayer, find themselves looking for people or places to turn to for guidance and support. And in a global village where cultures and philosophies of all kinds rub increasingly together, many yearn for a mature understanding of life, embracing layers of meaning, maybe complicated and possibly conflicting - and most people on a spiritual search accept this complexity as a good, interesting, energising thing.

It's never too late to ask the questions; it's never too late to take new steps in life and faith. I myself was only confirmed at the age of 37. I welcome and encourage conversation and exploration of these questions: hence the ever-open door in all our churches for those seeking to pray, explore, learn, grow.

*Revd John Davies, Priest in Charge*

*john.davies@leeds.anglican.org. 01524 805928  
More from John at [bit.ly/johndavies-talks](http://bit.ly/johndavies-talks)*

## Church services & dates

### St James' Church, Clapham

#### *August and September*

Every Sunday - Holy Communion at 11am except Sunday 30<sup>th</sup> September when there will be a United Service at Eldroth at 10.30am

### St Matthew's Church, Keasden

#### *August*

5<sup>th</sup> - Holy Communion at 11am

12<sup>th</sup> - no service at Keasden instead Messy Church at Eldroth 11am -1pm

19<sup>th</sup> - no service

26<sup>th</sup> - Evensong at 2pm

#### *September*

2<sup>nd</sup> - Holy Communion at 11am

3<sup>rd</sup> - Keasden PCC meeting at 7.30pm

9<sup>th</sup> - Holy Communion at 2pm

Saturday, 15<sup>th</sup> - Harvest supper and Domino Drive at 7pm at Hammond Head

16<sup>th</sup> - Harvest Festival at 6.45pm

23<sup>rd</sup> - Evensong time to be confirmed

30<sup>th</sup> - United service at 10.30am at Eldroth

### Bethel Chapel, Cross Haw Lane, Clapham

#### *Sundays:*

Junior Church 10.15am, Services 11.00am & 6.30pm

#### *Special Notices for August:*

***Weekdays: no regular weekday activities during August***

1<sup>st</sup> - 5<sup>th</sup> - Sportsreach - football & netball, contact Mark Hutchinson 07968182866

17<sup>th</sup> - Coffee & Dominoes 10.00 - 11.30am.

24<sup>th</sup> - A Treasure Hunt walk & BBQ at 6pm

#### ***Weekdays - September:***

1<sup>st</sup> Thursday Senior Citizens at 2pm,

3<sup>rd</sup> Thursday Fellowship at 2pm,

4<sup>th</sup> Thursday Coffee Evening at 7.30pm

#### ***Children's activities:***

Mums & Tots Friday 9.30-11am

Fortnightly on Fridays,

a) Kmotion (primary school aged children) at 6.00pm

b) Encounter (9 years and up) at 7.30pm

#### ***Special Notices for September:***

21<sup>st</sup> - Family/youth night 7.30pm

22<sup>nd</sup> - Harvest Supper 7.30pm & 23<sup>rd</sup> - Harvest 11am & 6.30pm

Mon 24<sup>th</sup> - Gospel service 7.30pm

Tues 25<sup>th</sup> - Life story evening 7.30pm

Wed 26<sup>th</sup> - Gospel service 7.30pm

Thurs 27<sup>th</sup> - Flower arranging with Ruthie Woodhouse 2pm & Coffee evening & Life story 7.30pm

Fri 28<sup>th</sup> - Family night 7.30pm

Sat 29<sup>th</sup> - Gospel Concert with Michael Ramplin 7.30pm

Sun 30<sup>th</sup> - Family worship 11am & youth service with Bruce Pearson 6.30pm

### Methodist Chapel, Newby

Service - 1<sup>st</sup> Sunday in month at 2pm, all other Sundays at 11am



## School news

The end of the school year has just passed and school has been a hive of productivity over the last few months. Our production of "Joseph and the Technicolor Dreamcoat" was performed in the Village hall on Wednesday 18<sup>th</sup> July and was very well received. It was the full production – not just highlights – and the children worked so hard to learn all the songs and dance routines.



*The children receive their Silver Award from Herbie the Carrot!*

The Year 6 children headed up to bonny Scotland to spend a few days exploring Edinburgh. "Edinburgh was an exciting place to go to. We had an amazing time at Dynamic Earth, the Zoo, the National Museum of Scotland and the Castle. It really was a great adventure."

Gardening Club worked hard to keep all the vegetables and fruit bushes watered in the exceptional weather. Before the end of term, we picked the red currants, blackcurrants and gooseberries. The apples will hopefully still be on the tree ready to pick in the autumn. We had a bumper crop of strawberries - usually eaten during break time!

Our gardening and cooking activities (including work with local farms) enabled us to renew our Silver Food for Life Award (last awarded 2011). The children worked hard over the last two years and received their award at a presentation in Northallerton.

The Friends of Clapham School are preparing activities for the Street Fair. This last week we said lots of goodbyes to different people connected with school. The Year 6 children are moving on to the next stage of their education; Mrs Yardy (NISCU) held her last collective worship before moving to the Isle of Man; and we will sadly say goodbye to members of staff.

Our Leavers' Service at St James' Church held on Thursday 19<sup>th</sup> July celebrated our memories of school life followed by a Jacob's Join in school.

Finally, the last day of term saw the whole school participate in our annual walk up the Nature Trail to Ingleborough Cave.

Before we know it, we will be back at school for another exciting year, when the Vikings might be invading Clapham!

*Jackie Rowe  
Teacher/Staff Governor*

## Craven Accordion Orchestra

On Saturday June 30<sup>th</sup>, St. James' Church Clapham welcomed back the Craven Accordion Orchestra who once again gave a varied programme of music - from the lilting, soft, sounds heard in a Mary Poppins medley to the full rumbustious sounds of the James Bond concert suite. The variety of tone, texture and rhythms surprised those who had not heard the orchestra before, whilst those who had were not disappointed in their expectations. All were treated to a very enjoyable evening of foot-tapping music played by a wide age group to an audience of an equally wide age group including two children from America. The concert concluded with "Always Look on the Bright Side of Life"- a fitting ending to a perfect summer's evening.

*Liz Mason*

## Village playpark

It's great that the playpark is being so well used due to the good weather. Volunteers continue to keep it well maintained through regular mowing, litter picking and emptying the bin. One of the benches needs some repairs doing to it so if anyone can help with that please contact me.

B4RN will be working in the playpark for a couple of days in August laying down ducts to connect nearby properties. For safety reasons the playpark will be closed while the work is happening.

*Don Gamble  
Clapham Park Association  
015242 51775  
claphamplaypark@gmail.com*

## Settle Photographic Group

Our 10<sup>th</sup> Photo Trail & Exhibition is in August. The images will be displayed in Settle shops and businesses from 1<sup>st</sup> - 20<sup>th</sup> August, then transferred to Clapham Village Hall for the exhibition for the Bank Holiday weekend. Vote for your favourite picture.

Monthly meetings are held at Townhead Court, with additional meetings during the winter. Our programme includes talks, visits to local places of interest, demonstrations, photographic challenges and a chance to discuss our work with other members. For further info [www.settlephotos.org](http://www.settlephotos.org)

New members and visitors are always welcome.

**Settle Photographic Group**

**Annual Town Trail**

**FIND THE PHOTOS!**

Search the shop windows around Settle and see how many pictures you can find

**1st - 20th August**

**Settle Photographic Group**

**Annual Photographic Exhibition**

**Clapham Village Hall**

**Bank Holiday Weekend**  
Saturday, Sunday, Monday

**10am - 5pm**

**FREE**

**Refreshments available**

[www.settlephotos.org](http://www.settlephotos.org)

## Steven Hopley 11 March 1972 - 12 July 2018

Steven was born in Keighley. Starting school firstly at Horton in Ribblesdale, he then moved with his parents Beryl and Ian to Austwick. When he was ten his brother Simon was born.

Steven went on to Settle Middle School and High school, then to Keighley College to train as a joiner. He was employed in the family business "Hopleys" and worked there on the tools for a few years before joining his father in the offices. When his father retired Steven took over the business.

Steven and Fiona met in 2002 and were married in 2007, George was born in 2008 and Harry in 2010. They lived for 11 years in Eldroth - Steven bought the barn from John Airey and converted it himself, before moving to Keasden in 2013 to start a new project. Steven always wanted a project to do.

Steven's hobbies and interests included **sled dog racing** from 1994 to 2008 when up to 20 husky dogs were owned and raced all over the UK - Steven won the European championships in Sweden. Time then to retire from sled dogs and spend time with his growing family! From a young child, he was a keen **skier**, his parents often took him to Scotland. Steven became part of the Keasden shoot and he enjoyed the social gathering as much as the **shooting!** **Biking** - Steven enjoyed weekly meets and biking trips to Wales, France and Morocco.



Although chemo had weakened him, by acquiring an electric bike Steven could go out with the "lads" again. He considered being a **pretend farmer**, buying some cows and a bull because he thought they looked nice and he wanted to give farming a go!! Steven loved planning and taking **holidays** At Easter this year his treatment got delayed so the family took a last-minute trip to Wales – the accommodation got booked and the family set off within the hour! Steven loved the **outdoors** (snow and cold particularly) and a **challenge**.

Steven was diagnosed in January 2016 with Ewing's sarcoma - a rare cancer, he had a gruelling year of 14 rounds of chemo, seven weeks of radiotherapy and an operation. In 2017 Steven was cancer free and he worked on building up his fitness again and making lots of memories for George and Harry.

Sadly, in January this year the cancer returned. He proceeded to endure further chemo but unfortunately the cancer got the better of him.

Steven never considered giving up as he didn't accept defeat. He fought to the bitter end with positivity and courage.

Fiona and her family extend their thanks to the Bexley wing oncology department at St James's University Hospital, Ward J45 where Steven spent his last few weeks, Cathy Wallace their assigned cancer nurse, whom they could ring anytime, Settle Health Centre and Settle district nurses, especially Julie and Sue.

## Then and now



Photo: Andy Scott

The New Inn figures prominently in these two pictures of the village centre. The earlier one is from an undated postcard which, from the gent's costume and vehicle, I would hazard to guess at the late 1920's/early 1930's.

If correct, then it shows how little the buildings have changed in the intervening ninety or so years, but what a difference the treeline makes and you can no longer see right over to the Bowland Fells from this spot on Riverside!

*Andy Scott*





FRESH, LOCAL ORGANIC FRUIT & VEGETABLES  
ORGANIC GROCERIES AND WHOLEFOODS  
Come and see our extensive range of organic  
produce in our lovely farm shop, or place an  
order online with FREE delivery!  
**www.growingwithgrace.org.uk**  
Shop open Tuesday – Saturday 9am-5pm

## Settle Chimney Sweep Services



4 Craven Terrace  
Settle BD24 9DB

*Supplier of pots, cowls & bird nets*

Tel. 01729 823683  
Mobile. 07815 285321

Knitting Needle Craft Haberdashery Sewing Card Making

Jewellery Ribbons Buttons Bows

## Cottontail Crafts

VISIT OUR SHOP and WEBSITE

16 Duke Street, SETTLE BD24 9DN

www.cottontailcrafts.co.uk

sue@cottontailcrafts.co.uk

01729 822946

*A Paradise for Crafters*

Jewellery Ribbons Buttons Bows

## Mark Watson Home & Garden Maintenance



Digging, fencing, hedge trimming, mowing,  
paving, planting, power washing, spraying,  
strimming, turfing, gutters cleared. Loft  
insulating, pointing, rendering, painting.

No job too small, reasonable rates,  
estimates given.

07759 680938 • 07759 680943  
Low Bentham 015242 62038

## CLAIRE MARIAN & Co.

NAILS BEAUTY  
MASSAGE

015242 51229

07958 629556

## Home Barn Foods

*Outside catering for all events*

**Lucy Knowles**

Fiach Cottage, Feizor, Austwick,  
via Lancaster LA2 8DF

Telephone:  
01729 825626 or 07738 922 524



Telephone: 015242 51502

Email: davidinclapham@googlemail.com

Domestic (Denise): 07577 620812 Estate (David): 07974 972615

**Over 25 years experience**

Domestic cleaning, DIY, Grass cutting, Strimming, Knapsack spraying,  
Chainsaw / Joinery jobs and more !. . . just ask



*Advice support and social opportunities  
for older people and their carers.*

Cheapside, Settle, BD24 9EW  
Tel: 01729 823066  
www.ageuk.org.uk/northcraven  
Registered Charity number: 1141867

## Parish Council news

### Clapham cum Newby Parish Council met on the evening of 26<sup>th</sup> June, 2018.

A written police report was received which set out details of a number of incidents dealt with by them in the preceding month or so. These included complaints with regard to travellers' horses, four road traffic collisions and two other road-related offences.

In relation to highways matters, the Council received requests for action in relation to the overgrown state of the footpath connecting Old Road, Clapham with Clapham Road, Austwick and the speed limit on the A65 between Clapham and Newby and asked for those matters to be referred to the appropriate authorities. It also noted that issues with regard to erosion by Keasden Beck posing a potential threat to Reeby's Lane, a cross-roads sign at Keasden Cross-Roads, the public footpath at Crina Bottom, travellers' horses and parking in Clapham Village had been reported or otherwise dealt with since the last meeting.

There was information before the Council to indicate that there has been some progress in the long-standing plan to restore the ornamental drinking fountain on Riverside, Clapham. An attempt is to be made to supply water to the fountain from Clapham Beck and pipe has now been purchased to facilitate this.

With regard to planning matters, the Council supported an application for listed building consent for external and internal alterations at Dubsyke and an application to carry out small scale excavations at Clapham Bottoms. It was noted that an application to replace an existing conservatory structure with a new garden room structure, to form a window and to construct a porch at Marridales, Newby, had been granted by Craven District Council and that an application to demolish an asbestos cement building and replace it with a new portal frame building on the same footprint at Home Farm, Clapham had been granted by the Yorkshire Dales National Park Authority.

*For more information on the work of the parish council please click on the 'parish council information link at [www.claphamyorkshire.co.uk](http://www.claphamyorkshire.co.uk) Information on the website includes a list of councillors and their contact details, councillors' interest and minutes of past meetings.*

The next Parish Council meeting will be in the Village hall on Tuesday **25<sup>th</sup> September** at 7.30pm. Everyone is welcome to attend. The Parish Clerk & Responsible Financial Officer Nigel Harrison can be contacted by email: [njhar1957@gmail.com](mailto:njhar1957@gmail.com) or telephone 015242 51165

### The Parish Council met on the evening of 24<sup>th</sup> July 2018.

There was a police representative present and the Council received a report outlining police incidents in the parish in the preceding month. These included a fatal road traffic collision on the A65, a sudden death, a burglary at a local cafe and campers lighting fires.

In relation to highways matters, the Council instructed the clerk to report severe potholing on Keasden Road above the crossroads and some apparently unlawfully placed signs elsewhere in the district. It was noted that the National Park Authority had undertaken to clear the path between Old Road, Clapham and Clapham Road, Austwick and that a letter to North Yorkshire County Council raising the possibility of a reduction of the speed limit on the A65 between Clapham and Newby had received a response indicating that this is not seen as feasible by the County Council or the Police.

The Council decided to commission a finger-post sign to be erected at the top of Henbusk Lane, Newby Cote. It is anticipated that this will be paid for by funds made available through Councillor David Ireton (North Yorkshire County Council and Craven District Council).

Updates were received with regard to the hyperfast broadband project, which is currently set for completion by mid-October, and the neighbourhood planning initiative. The Council was also made aware of progress towards restoring the ornamental drinking fountain. Pipe has been purchased to supply water from Clapham Beck.

There was a number of planning matters before the Council. The Council supported applications for the display of three map boards in Clapham Village, for a change to the initial plans in relation to a previously granted application for a development at Greenways, Newby and for the erection of a three bay oak framed garage at Wenning Hipping. It was noted that Listed Building Consent has been granted by Craven District Council for works at 2, Gildersbank, Clapham and that permission for tree works at 5, Clapdale Way, Clapham and Marton House, Clapham has been granted by the Yorkshire Dale National Park Authority.

## Diary dates

### August

1<sup>st</sup> - 5<sup>th</sup> Sportsreach football & netball school, contact Mark Hutchinson 07968 182866

Saturday, 4<sup>th</sup> Keasden Parish Walk & Barbecue, 6.30pm Clapham Woods Farm, phone Jules on 51376 for info

10<sup>th</sup> - 17<sup>th</sup> Gaping Gill Winch Meet

Saturday, 11<sup>th</sup> Bleak Bank BBQ, 7pm phone John & Judith on 51350 for info

Saturday, 11<sup>th</sup> Kevin McSherry Album preview 7.30pm VH

Friday 17<sup>th</sup> Coffee & Dominoes, 10am BC

Friday 24<sup>th</sup> Treasure Hunt walk & BBQ, 6pm BC

25<sup>th</sup> - 27<sup>th</sup> Photograph Exhibition, 10am-4pm, VH

### September

Tuesday, 11<sup>th</sup> - Newsletter AGM, 7pm VH

Tuesday, 18<sup>th</sup> - Clapham Lectures, 7.15 CS

Saturday, 22<sup>nd</sup> - The Wills Project Exhibition VH

Tuesday, 25<sup>th</sup> - Parish Council, 7.30pm VH

*BC: Bethel Chapel, Cross Haw Lane, LA2 8DZ*

*VH: Clapham Village hall, Cross Haw Lane, LA2 8HR*

*CS: Clapham Primary School, The Green, LA2 8EJ*

# Peter Allen FLOOR COVERINGS LTD

UNIT 2, SOWARTH FIELD INDUSTRIAL ESTATE, SETTLE, BD24 9AF  
**01729 825122**

Mon-Fri 9am till 4.30pm Sat 10am till 12.30pm

[info@peterallenflooring.co.uk](mailto:info@peterallenflooring.co.uk)

**WITH OVER 30 YEARS EXPERIENCE.**

Domestic & Commercial Flooring.

Amtico and Karndean Design Showroom.

Made to Measure Blinds.

Beds and Mattresses.

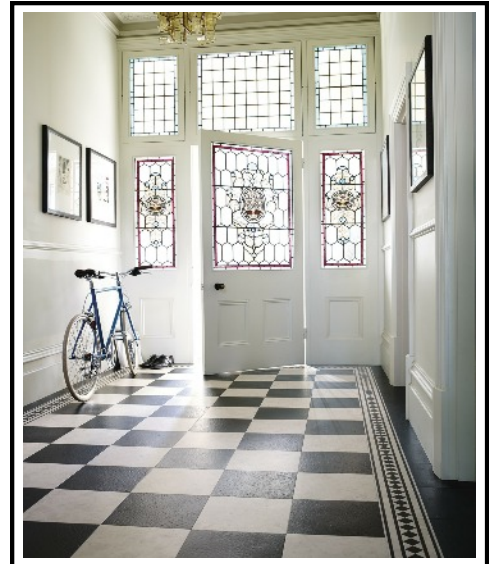
Rugs.

Bespoke Furniture, Harris tweed/Abraham moon.

Solid Oak & Pine Furniture.

We offer a Free measuring service.

Ample Free Parking



Amtico  
One Exclusive  
Retail Partner



Karndean  
Designflooring



## Clapham Village Store

Gift vouchers  
now available  
to purchase!



*the heart of our village*

Summer Opening Hours  
*from Monday 26 March*

Mon to Wed: 8am - 5.30pm

Thu: 8am - 7.00pm

Fri: 8am - 5.30pm

Sat and Sun: 8am - 3.30pm



Main Street, Clapham, LA2 8DP

Tel. (015242) 51524

Email: [info@claphamvillagestore.co.uk](mailto:info@claphamvillagestore.co.uk)

Website: [www.claphamvillagestore.co.uk](http://www.claphamvillagestore.co.uk)

Industrial and Provident Society registered in England and Wales with number IP032434  
VAT Registration No. 199808635



## Fuel bulk buying scheme

### Important Information

After eight years, and with another knee operation on the horizon, Glenys has decided to retire from running the Domestic Fuel Bulk Buying Scheme. Over the past years Glenys has been a marvel at haggling with oil companies and communicating with the scheme's participants, ensuring we get the very best deal for our domestic fuel. The number of contributors to the scheme has grown every year and at the last count there were nearly 100 households on the list.

The last oil order to be organised by Glenys will be in September. Then - unless someone comes forward to take it over - we will be on our own!

I know how much the work Glenys has done on our behalf was appreciated and would like to thank her from us all. I am conscious, too, that over the years many of you have found your own way of thanking Glenys.

If there is anyone who would like to take over running of the Domestic Fuel Bulk Buying Scheme please get in touch with Glenys. She would be very happy to show you the inner workings

*Jill Buckler  
Clapham Sustainability Group*

## Thank you

I would like to thank everybody for all the support and kindness shown to myself and my family following the death of my mother, Audrey, of Shepherd's Croft, Newby.

Thank you all for your cards, flowers, and messages of condolence which were very much appreciated at such a difficult time.

Thanks also to Reverend John Davies and Ian Greenhalgh for the lovely funeral service at St. James's Church, Clapham; to Sue Fairhurst for the beautiful flower arrangements in church; to Home Barn Foods and Bethel Chapel; and to Jimmy Macdonald of B & W Funerals for all his help, support and guidance during the arrangements.

*Sally Dewhirst*

### Bleak Bank BBQ

Saturday, 11<sup>th</sup> August 7pm onwards

Everyone welcome

Ring John & Judith on 51350 to advise numbers or for more info

## Who are Dales folk?

Prior to being badgered by a lot of people, I hadn't really thought a great deal about this question. Who are we and where do we come from? Both are questions that had never previously crossed my mind.

But after talking to a friend, who also happens to be a local councillor, over eighteen months ago I started to give the matter some thought. I was just finishing my Master's degree and a book about the Romans and looking for a new project. Since then, try as I might to consider other ventures, this question keeps being asked of me. It's like the whole thing has momentum of its own, and like everything that comes out of the Yorkshire Dales it is proving stubborn!

Over the next couple of years I hope to find out where we come from. I've already started scouring archives but I really want this to be a community project. I want us Dales inhabitants to do our own family history research and then share the findings. I know I've got Irish and Scottish blood in me as well as Yorkshire genes. But I want to know more.

I'm going to be taking workshops in the village hall, and lots of other halls around the Dales and I'll be encouraging and helping anyone who is interested to trace their family, to research where their ancestors come from and then, knowing what characters we all are and no doubt our predecessors were, I'm going to write a story.

If you have got any interesting stories from your family's history that you would like to share with me please email [robertbullock721@btinternet.com](mailto:robertbullock721@btinternet.com) or call me on 51898.

*Rob Bullock*



JLL Plumbing and Heating Engineers are gas safe and LPG/Natural gas registered. We are based in Ingleton and offer a wide range of plumbing and heating services



Call us: 01524 813 333  
Website: [www.jllplumbing.co.uk](http://www.jllplumbing.co.uk)  
Email: [enquiries@jllplumbing.co.uk](mailto:enquiries@jllplumbing.co.uk)

## Before & After School Club

### Flexible Hours

30 hrs & 15 hrs Funded Places Available

Pick up & Drop off from Local Schools

Holiday club available



Accredited Nursery



Call 01524 241903 for more information-  
[www.kidzdaynursery.co.uk](http://www.kidzdaynursery.co.uk)

## News from the farm - summer bleatings



Those of us that keep sheep on Ingleborough meet once a year in order to set the new season's gathering dates and discuss maintenance of the fell pens plus any other relevant business. As you would expect most of the evening is spent eating ginger biscuits and drinking tea while we compare farming disasters, of which there are many and varied. We then move on to the weather and how terrible it's been. Next up is any current local gossip doing the rounds, some of which we add to which takes a while. Usually a bit of nostalgia creeps in as we discuss some of the farming characters no longer with us, like the chap who farmed on the top road: when he got new boots he walked everywhere on the grass verge in order to preserve the tread and if he needed to cross the road - he took big strides.

The last Monday in June is the first Ingleborough gather and it is one of the fullest, longest days in our farming year. We are on top of Ingleborough mountain for 6am in order to make the most of the cool of the morning for dog, sheep and, of course, humble shepherd. To be on the top for 6 means leaving the farm at 5. Before we leave, the cows have been rudely awoken, milked and returned to their field wondering what all the fuss is about, the calves are fed and the milking area washed out. The only advantage to having cows that don't give a lot of milk is that it doesn't take a lot of getting. I like to think that at Bleak Bank we have huge potential because most of what we do is below average.



the dogs have a well earned break, mostly from frayed tempers and bad language.

Most of the sheep arrive at their correct gathering point because, like me, they know the way home but some do get a bit confused in the heat of battle and are easily led astray. They will appear at the wrong mustering point wondering what happens next, a bit like me in Asda. The next job is to

return these sheep to their rightful owner and this is done during the "shedding" process when sheep are sorted into individual flocks. We have a rota system and one shepherd is responsible at each gather for making sure the stray sheep get home: they are in charge of "stragging".

By the time all the sheep are sorted and have been despatched to their farms it is often knocking on towards dinner time and finally our yard is full of our own sheep and a few dogs, eagerly anticipating what might happen next. They love every minute.

Next, we separate the sheep with lambs from the hogs. A hogg is a lamb born last year, they are the equivalent of a teenager and have not yet experienced the joys of motherhood, unlike some teenagers.

Our next job is to shear these hogs and have them back on the fell for close of play. Nothing makes sweat drip off the nose end quite like shearing sheep. My Dad used to say it wasn't natural to have your head below your backside for much of the day and I think he could be right. We wrap and pack the wool as we go before it is sold to the wool marketing board: often wool from the hardy upland sheep is sold to China where it is made into carpets.



By now it could be approaching dark, bearing in mind we've had a break to do the cow milking thing. Supper time marks the end of the day followed by a bath with about half a bottle of Radox, or whatever can be found. The trick is to stop pouring before the bubbles get over the side of the bath as this can lead to a public enquiry which never ends well.

The adult sheep with their lambs are left for tomorrow. The sheep are sheared and the lambs have a dose of worm drench as well as being given a mineral bolus. We like to leave them "inland" for a few days after this to make sure the family unit is secure. It is always remarkable how, in a field of a few hundred sheep, and often in minutes, each lamb finds mother, and I wonder if the lamb notices the new short back and sides mum is sporting.

By Wednesday or Thursday all are back up the mountain and the yard can be swept.

*John Dawson*



## A secure future for Clapham C of E Primary School

Hello, I'm Michael Ravey, the Chair of Governors of Clapham C of E Primary School. I'd like to take this opportunity to update you on developments at the school. Let me start with the firm and happy statement: 'currently, there are no plans to close the school', so please put aside any rumours you may have heard to the contrary!

Of course there is the old saying that 'there's no smoke without fire' so, with this in mind, the Governors felt it was important to lay the facts on the table and, in doing so, rally the support of the residents for what we feel will be an exciting, new venture for the school, the village and our wider community.

Some of you may have seen the BBC's Country File on 1<sup>st</sup> July, which focused on the plight of rural education, particularly schooling in North Yorkshire. At a national level, the picture for rural schools is challenging with capped budgets, rising costs and dwindling numbers. Our wonderful school has been no exception. Governing bodies have to work hard to demonstrate balanced budgets and over the last year our management team, including the Governors and the Head Teacher, have worked closely with both the Local Authority and Diocese to try to achieve this. Inevitably this has involved some hard decisions, without which the tone of this article might have been very different. However, it has also opened the door to exciting opportunities and a drive to see our school grow and flourish.

The most significant of these difficult decisions was the acceptance of the letter of resignation from Mr. Matthew Armstrong the Head Teacher. The Governors would like to take this opportunity to sincerely thank Mr. Armstrong for his professionalism, guidance and commitment to both the school and the students and we are certain that this is echoed

by the staff, parents and, most importantly, the children.

We will also be bidding a sad farewell to Anne Pybus and her husband Bill who are retiring. Anne's steadfast commitment over many years as School Secretary has always gone above and beyond her immediate remit and she will be greatly missed.

Also leaving us is one of our temporary teaching assistants Lola, whilst Lorraine Wildman will be retiring from some of her duties. Our thanks go out to all staff - past and present - for their dedication and for the way in which they enhance and enrich the lives of our students.

Clearly, the school requires a Head and, as this is such a crucial appointment, the Governors have decided to adopt a considered approach. To facilitate this, we have made an interim appointment: Katherine Marshall will take charge of the school in September and will be with us for at least the first term. We are very excited about working with Katherine, who has been seconded from a large junior school in Skipton. Longer term, we are exploring a number of options regarding the future management of our school and whilst we are not, as yet, able to share any details regarding the progress of our contemplations, we can assure you that this restructuring will provide strong leadership.

It would be naive to think that rural schools will not continue to face challenges but we are working towards a strategy that we believe to be sustainable. A fundamental element of this is that we recognise the need to adopt a more outward-facing approach. There are already moves afoot! As a result of a very positive parents' meeting, a newly-invigorated PTA group, 'Friends of Clapham School', has been out and about forging closer links between the village and school, and planning joint fund-raising activities. The school is looking forward to working in this more open way and to welcome others to share in school activities. We are also advocating for the need to encourage young families to move to the village and become part of our School, examining how better general use may be made of our school facilities and exploring possibilities of support or sponsorship from local business.

Clearly, this vision is in its infancy and is reliant on the continued dedication, enthusiasm and expertise of all concerned. Our school is a happy and excellent school, one that fully deserves its place in the community. Please support us in every way you can.

Finally, but equally important, we wish all children transitioning to new schools this year our very best - the foundations you have built at Clapham will set you on the way to future success. We look forward to welcoming new staff and students in September. In the meantime, a very happy summer to you all.

*Michael Ravey  
Chair of Governors  
Clapham C of E Primary School*



*Anne Pybus receives gifts and flowers to mark her 23 years' service to the school.  
Photo: Andy Scott*

### Gaping Gill August Winch Meet date information

This year, the Craven Pothole Club's Gaping Gill meet is being held slightly earlier than usual.

The winch will be open to the public from Friday 10<sup>th</sup> to Friday 17<sup>th</sup> August inclusive.

Further information can be found at  
[www.cravenpotholeclub.org/index.php/about-gaping-gill/visit-gaping-gill](http://www.cravenpotholeclub.org/index.php/about-gaping-gill/visit-gaping-gill)

# Village Hall Notice Board

## Clapham Art Group



Tuesday Evening

Linda Clemence  
01729 823767

## Parish Council

4th Tuesday  
Evening of the month at 7.30 p.m.



Nigel Harrison 51165 or njhar1957@gmail.com

Unfortunately, the Thursday Dru Yoga class is  
no longer running.

Please watch this space for a possible  
replacement.



## Bowls

Played outdoors in  
Austwick for the summer.  
Returns to the village hall  
in October

## Whist

Friday Evenings  
7.30 p.m.



Elsie Morphet  
07951 295995

## Clapham with Horton W.I.



2nd Wednesday  
Evening  
of the month  
7 p.m.

Jill Walker  
01729 825358

Tai Chi  
Thursdays  
9 a.m. to 10.30 a.m.



Tony Bennett  
c/o 51240



1st Wednesday  
morning  
of the month  
11 a.m.

Brenda Pearce  
51816

# Beckside Yarns & Needlecrafts

A Gallery full of fabulous yarns by:

NORO • COLINETTE

DEBBIE BLISS • ROWAN

BRIGANTIA • LOUISA HARDING

LANG • RYC • GEDIFRA

... and many more

Help and advice always on hand

Call 015242 51122



BECKSIDE GALLERY, CHURCH AVENUE,  
CLAPHAM NORTH YORKSHIRE LA2 8EA

[www.becksideyarns.com](http://www.becksideyarns.com)

[info@becksideyarns.com](mailto:info@becksideyarns.com)

# i print

## YOUR LOCAL DESIGN & PRINTSHOP



20 STATION ROAD • SETTLE • BD24 9AA

**TEL: 01729 823990**



[hello@iprintshop.co.uk](mailto:hello@iprintshop.co.uk)

[www.iprintshop.co.uk](http://www.iprintshop.co.uk)





## Happenings at Ingleborough Hall

We have been extremely busy at Ingleborough Hall during the latter part of the school summer term and have had two special events taking place.



*Photo: Andy Scott*

The first was the North Craven Cluster of schools. This is the third year that we have run this programme for the local primary schools within the immediate area. Spearheaded by Mrs Pearson, head teacher at Bentham primary school, the 2-day event is for year 6 children. It is at a time when their SATs have been completed and they are about to leave their primary education to move to secondary school. Mrs Pearson's aim is to bring the district's schools together to allow the children to get to know each other before moving to their respective secondary schools.

Activities undertaken included caving, gorge scrambling, orienteering and on-site team building. Over 70 children and school staff participated. It was a successful couple of days and the children really benefited from having some time out of the school environment and making new friends.

Ingleborough Hall held its first Open Day for some time on Saturday, 7<sup>th</sup> July. Not put off by the football, we had a



*Photo: Andy Scott*

good turnout of people from Clapham village, our friends who resided at the Hall whilst it was a boarding school, previous visitors from the 80's and some that had been just a few weeks ago. We were truly blessed by the weather, as we have been all summer, which allowed for people to explore the buildings and grounds in their own time. A big thank you to all the staff at Ingleborough Hall for giving up their day and making this event a great success.

*Lee Paskin*

## Anyone for tennis?

Some of you may have noticed a bit of recent activity on Clapham's tennis court. Thanks to Bernard Ashurst's generous work, the court is in great working order and all we need now are a few more players.

The court is owned by the village hall and, thanks to their generosity, some new tennis rackets have been purchased (two adult rackets and two children's) and a number of balls.

Ron has kindly agreed to keep these at The New Inn, along with a key to the court which will be available for a



returnable deposit. For locals, we are suggesting a £2 charge to use the court (£5 for any visitors), with a signing out book for equipment.

Inspired by Wimbledon, we thought we'd have a go at getting the Clapham Tennis Club up and running again if there is enough interest.

We are suggesting a membership fee of £20 a year for family membership, and £10 for individual membership, which would include free use of the courts and free loan of the rackets, balls and key.

If you are interested in having a try-out, or in becoming a member, then please contact me.

*Maria Farrer*  
[maria.farrer@me.com](mailto:maria.farrer@me.com)

## Keasden rainfall report

May 2017	May 2018
4.5" or 114.3mm	1.5" or 38.1mm
June 2017	June 2018
8.75" or 222.25mm	1.25" or 31.75mm





- Fully equipped service & repair workshop
- Demo & hire bikes available from £50
- On site test track
- Free on site parking for local trails – Park & Ride!
- Members of Bike2Work & Cyclescheme
- 0% finance available up to 36 months
- Stockists of Specialized, NS Bikes, Santa Cruz & Whyte



[www.escapebikeshop.com](http://www.escapebikeshop.com)

015242 41226 – Kirksteads, Westhouse, Ingleton, LA6 3NJ

Mon – Fri: 10-5 / Saturday: 9:30-5:30 / Sunday: 10-4



## BRIDGE COTTAGE Bed & Breakfast

This charming 18th-century B&B with its sunny cottage garden is at the heart of Clapham, and has been extensively refurbished to reveal oak beams, window seats and slate floors. Enjoy a good selection of locally-sourced cooked breakfasts, homemade cake and biscuits.

Choose from three bedrooms: two doubles with ensuite showers, plus one twin/superking suite with ensuite bathroom and separate shower.

**From £40 per person.**

We are dog-friendly and are delighted to provide day care to our four-legged guests.

Station Road, Clapham LA2 8DP

Telephone 015242 51506

[www.bridgecottageclapham.co.uk](http://www.bridgecottageclapham.co.uk)

The Original

# LOGSDIRECT

We offer local, independent advice.

**Try our NEW products**

- Coffee Logs • Evening Lighters
- Yorganics Compost • Brackenburn Brackettes

- Mushroom Compost • Top Soil
- Bark • Kiln Dried Logs
- Firelighters • Smokeless Fuel • Pellets
- House Coal • Kindling • Firelighters
- Wood Pellets • Briquettes

Free local delivery (min order required)

Visit us at: Logs Direct Ltd, Brooklands Farm,  
Addington Road, Lancaster, LA2 6PG.

Tel: 01524 812476 Email: [enquiries@logsdirect.co.uk](mailto:enquiries@logsdirect.co.uk)

[www.logsdirect.co.uk](http://www.logsdirect.co.uk) [www.thelogyard.net](http://www.thelogyard.net)



## Westby Dairy

Robert and Janet Townson



**We deliver Milk, Cream and Eggs  
from our family dairy farm.**

*Our families have been producing milk for local delivery for generations, and now, along with the help of our son and daughters we are very proud to provide a great British tradition that is the doorstep milk delivery service!*

**We bottle milk from our own herd  
of cows for delivery to homes and  
businesses the very next morning.**

**Westby Hall Farm, Gisburn**  
**Tel. 01200 445283**



## News from YDMT

### Together for Trees

Trees are vital to so many aspects of life. As well as providing habitats for wildlife, reducing flooding and helping to combat climate change, we know that trees help to reduce stress, anxiety and promote a healthier lifestyle.

The Yorkshire Dales has just 2.7% woodland cover - much lower than the national average of 13%.

Since 1996 we've helped to plant around 1.4 million new trees, creating hundreds of new woodlands across the region, but much more still needs to be done.

We need your help to plant 100,000 native broadleaf trees over the next two years to create beautiful woodlands that everyone can enjoy. A donation of just:

- £6 per month could help protect and manage a woodland to allow wildlife to flourish.
- £15 to dedicate a tree in a young woodland.
- £40 could enable a disadvantaged person or school child to visit the Dales to take part in a woodland activity like bushcraft, tree planting or woodland maintenance, improving their well-being while ensuring that these habitats are understood.

You can find out more and support the appeal at: [www.ydmt.org/together-for-trees](http://www.ydmt.org/together-for-trees)



### Upcoming events - all need to be pre-booked.

- Botanical Drawing & Painting: 21 August, 10.30am-4pm, Chapel-le-Dale. £45
- Supporter Lunch: 20 Sept, 10.30am-3pm, Himalayan Garden & Sculpture Park, Ripon. Free
- Pennine Journey sponsored walk: 29 Sept, Ingleton to Clapham (8 miles) and/or Clapham to Settle (6 miles).
- Choral concert with Cantores Salicium: 14 October, 3pm, Kirkby Malham. £10 (U16's free)
- Guided Salmon Walk: 23 Oct, 10am, Stainforth. Suggested donation £15
- Introduction to Vernacular Buildings: 10 Sept, 9.30am-4.30pm, Chapel-le-Dale. £12.50
- Introduction to Drawing Vernacular Buildings: 11 Sept, 9.30am-4.30pm, Chapel-le-Dale. £12.50
- Flowers of the Dales Festival: 30 nature and wildflowers themed events across the Dales from Aug-Oct. [www.ydmt.org/Festival-2018](http://www.ydmt.org/Festival-2018)

To find out more about any of the above, call YDMT on 015242 51002, email [info@ydmt.org](mailto:info@ydmt.org) or pop into the office Mon-Fri 9am-5pm – we're opposite Clapham Village Store.

*Sarah Pettifer*

## From our sunny Southport correspondent ...

I would like to say a huge THANK YOU to you all for your cards, support and the love I have felt coming my way from everyone.

I'm writing this on 3<sup>rd</sup> July, one month since my fall and I am working hard at getting my legs stronger.

On behalf of David, he has been overwhelmed by the offers of help and hospitality he's received, especially with the house move. Thank you again. How glad we are that we are staying in this most wonderful community.

*Jackie Kingsley*

### Oven roasted chicken

#### Ingredients (to serve 2)

4 tbsp\* marsala (or white wine if preferred)

4 tbsp chicken stock

1 tsp Dijon mustard

1 tbsp olive oil

Free range chicken thighs or skin-on, bone-in chicken pieces

20 seedless grapes

1 tbsp thyme leaves, plus a few sprigs for sprinkling

Carrots and fine beans (depending on quantity required)

Streaky bacon or pancetta to wrap above vegetables

Maris Piper potatoes for mash, and a little butter

Salt and pepper to taste

\*1 tbsp = 15ml



#### Method

Pre-heat the oven to 200C(180C fan) and mix the marsala, stock and mustard together in a jug.

Heat the oil in a frying pan or in an oven dish that will go on the hob.

Fry the chicken, skin-side down, for five minutes to make the skin golden. Turn the chicken skin-side up, add the marsala mixture to the pan and let it quickly bubble up. Add the grapes and sprinkle in most of the thyme leaves. Bring back to a bubble, then transfer to the oven and cook for 20 to 30 minutes until the chicken skin is bronzed and crisp and the chicken is cooked through and tender.

Meanwhile chop some carrots into batons and cook on the hob in a little salted water along with the fine beans. When cooked (but still with a bite) remove and drain. Leave to cool slightly then bundle together and wrap in either mixed or separate parcels using the streaky bacon/pancetta. Place in a roasting dish in the oven to cook.

Prepare and boil the potatoes ready to mash with butter, garlic or mustard when you are ready to serve.

When the chicken is ready, remove from the oven, cover and allow to rest. Then put the juices into a pan and bubble for 2-3 minutes until slightly reduced and thickened to a savoury sauce. Pour around the chicken keeping the skin crisp, scatter with thyme (leaves and delicate sprigs).

Serve with buttery mash and wrapped vegetables.

*Recipe provided by Clapham with Horton W.I.*

## Clapham Hyperfast news

The project to bring the world's best broadband to Clapham is drawing to a close. After four years of planning and over three years of digging, the final work is being done.



Homes and businesses to the east of the beck in the village are currently being connected and this phase will finish by September.

The project has installed fibre across the whole of the parish of Clapham-cum-Newby including remote properties such as Keasden Head, Ingleborough Cavern and Heigh Head.

The aim set by the Parish council was to give the choice of superfast broadband to every property and this has now been achieved. In fact, the project has gone further and installed hyperfast broadband from B4RN which is twenty times faster than the best BT service.

If you want B4RN but haven't yet asked, you should contact [info@claphamhyperfast.net](mailto:info@claphamhyperfast.net) immediately.

**The Clapham Hyperfast project will end in October and after that date property owners will have to deal directly with B4RN.**

There will be an end-of-project party in November, details of which will appear in the next edition of the newsletter.

*Simon Peach  
Clapham Hyperfast Project*

## Shop news

Our community owned village shop held its Annual General Meeting on July 4<sup>th</sup> and those present were able to celebrate another successful year of trading.

Much of this success can be attributed to the hard work of staff and our volunteers. The value of the volunteering input, using the National Living Wage as a benchmark, amounts to a minimum of £41,000.

Thanks go to all who work in the shop. We have also had excellent support from our landlords, the Ingleborough Estate, and external funders such as the Kirkby Foundation.

A highlight of the year was receiving an award for Rural Enterprise and Employment from the Yorkshire Dales Millennium Trust. The money received along with that award has been put to good use, enabling us to make a number of improvements in the shop.

Along with celebrating a successful year we did have the sad duty of saying 'goodbye' to two Management Committee members who have given sterling service to the shop but have decided to stand down: thanks were expressed to Denise Wilson and Angela Peach for their contributions over the years (and, as is the way of these things, to thank them for continuing to volunteer in other ways).

Finally, it was good to welcome two new Management Committee members - John Hibbert and Barbara Yates.

*Sue Mann*



## TEATIME VINTAGE

*Curios, Collectables & Creations*

*Vintage Heaven  
in the heart of the Yorkshire Dales*

Tracey Bilton  
Home Barn  
Church Avenue  
Clapham  
LA2 8EQ

015242 51804  
07534 302135

[Teatimevintage14@gmail.com](mailto:Teatimevintage14@gmail.com)

## CLAPHAM & DISTRICT NEWSLETTER



The newsletter is a community initiative which shares news, announcements and items of interest. It is funded mainly from advertising revenue and relies on volunteers to get it together and distributed. The newsletter is produced in black & white, though we aim to produce one colour edition per year.

It is distributed free to the communities of Clapham, Newby and Keasden. Copies are available in the Village Store and local churches. Electronic versions are displayed on the Clapham Village website (in colour) thus increasing the audience by potentially large numbers.

The intention is that it's both 'for you' and 'by you', so we rely on submissions from readers and the village institutions which make up our community. The next edition is due out at the beginning of **October**. **Copy deadline: 20 September.**

Items should be around 300 words and, if possible, accompanied by a high resolution photo: we can be flexible so contact me. **Contact: Andy Scott Email: [claphamnewsletter@gmail.com](mailto:claphamnewsletter@gmail.com)**

To advertise in six editions (one year) the costs are:

1/8 page - £17.50 : 1/4 page - £35.00

1/2 page - £70.00 : Full page - £140.00

**Contact: Judith Dawson**

**Email: [claphamnewsletter@gmail.com](mailto:claphamnewsletter@gmail.com)**



## Steam update

Just down the line from us (or should that be “up” the line?) the year 1968 saw the opening of the very first of Britain’s preserved railways, the Keighley and Worth Valley Railway (KWVR). This year is its 50<sup>th</sup> anniversary and we here in Clapham have benefited with the movement through the station of a couple of the guest locomotives due to take part in its celebratory gala.

First through, on 19<sup>th</sup> June, was ‘Black Five 45212’ - a locomotive which is owned by the KWVR but on a long loan which often sees it used for the summer-long steam services on the Fort William to Mallaig line. At the end of that same week, she was joined by ‘46100 Royal Scot’ which also passed through here.



*‘46100 Royal Scot’ passing through Clapham on Friday, 22<sup>nd</sup> June en-route to the KWVR 50<sup>th</sup> Anniversary Gala  
Photo: Andy Scott*

Meantime, the station continues to see steam locomotives as they head from Carnforth to Hellifield ready for duties on the Settle and Carlisle line.

The recent dry weather, however, has seriously increased the risk of lineside fires from stray sparks, leading to the majority of such excursions (and positioning movements) being diesel assisted. That way, the engines don’t have to work so hard and thus it lessens the risk. It’s not quite the same thing to watch a steamer passing through the station when she’s facing backwards and sandwiched between a diesel and her support coach. But at least we’re not paying!

Hopefully, it will not be quite so tinder-dry by the middle of August when the Settle and Carlisle line should see a number of tours to mark the anniversary of the end of mainline steam in Britain.

Three separate steam trains are due to tackle the route on Saturday August 11<sup>th</sup> with further excursions during the following week. The locos for these don’t appear to have been finally decided yet, but ‘60163 Tornado’ has already been declared unavailable.

The first proper steam charter that will pass through the station is due on Saturday, 15<sup>th</sup> September when a round trip from Carnforth via Hellifield and Blackburn is planned.

*Andy Scott*

### **Clapham Lecture Group Autumn Programme 2018** Starts Tuesday 18<sup>th</sup> September In Clapham School (With a break at half-term)

**6 lectures by Michael Pearson of  
Austwick Hall  
*followed by*  
4 lectures by Jean Turnbull of  
Kendal Oral History Group**

*Each lecture starts at 7.15pm  
runs for 2 hours with a break for  
refreshments half way through.*

***The fee for the course of 10 lectures is £50.***

## ***Everyone Welcome***

For further information:  
[www.claphamyorkshire.co.uk/visit-clapham/events/](http://www.claphamyorkshire.co.uk/visit-clapham/events/)  
015242 51816 or 01729 823132

## **Settle Country Store**

11 Sowarth Field Ind. Estate, Settle, BD24 9AF

**Agricultural Supplies**

**Animal Feed**

**Animal Health**

**Equestrian**

**Country Clothing**

**Fencing & Gate supplies**

**01729 815070**

**David: 07538 289866 or Rosie: 07398 117269**

**Email: [settlecountrystore@outlook.com](mailto:settlecountrystore@outlook.com)**

**JAMES  
MARSHALL**  
*Joiner & Carpenter*



**Established 1988**

**WHITEFRIARS HOUSE • SETTLE**

**Telephone 01729 554074**

**Mobile 07818 117814**

**Email [jmarshalljoinery@gmail.com](mailto:jmarshalljoinery@gmail.com)**

## Village hall news

What a beautiful summer we are having! We hope to make good use of the fine weather to progress the refurbishment project, starting with the exterior work. The roof is badly in need of repair so work will start there soon. The heating system will also be replaced, as will the glass sealed units in the hall, followed by some damp proofing and redecorating. Without the contributions and grants already received we would not be able to start this work, so many thanks to all for your continuing support. More details in the next newsletter!

The village hall was pleased to host an evening with Ian McMillan and Luke Carver Goss on 6<sup>th</sup> June, which was a great success. We were entertained throughout the evening



with songs and witty tales from the duo. This hilarious night culminated with an anthem dedicated to Clapham, which some of you may wish to sing along to again! Here's how it goes...

*The Clapham Anthem (according to Ian)*

*I can see the twin plinths of Clapham*

*Sitting in the evening air*

*But I see the plinths are empty*

*In fact there's nothing there!*

*Chorus: On the left was a stuffed koala*

*On the right was a grizzly bear*

*Eating chicken tikka masala*

*Redacted chair – redacted chair?.. Redacted chair!*

*It happened back in 58*

*When Ian stole the notice*

*Now Clapham's in a right old state*

*It needs another poultice!*

*Ian was caught short*

*In flagrante delecto*

*It was his wife*

*Respecto!*

Can you all remember the tune? Or were you laughing so much at their antics - as I was!

On a more serious note, I'd like to draw your attention to forthcoming events in the hall. These include:

- A free show by local musician Kevin McSherry to launch his new CD (Saturday, 11<sup>th</sup> August at 7.30pm).
- A Photographic Exhibition (August Bank Holiday weekend) – Settle Photographic Group.
- The Wills Project Exhibition (Saturday, 22<sup>nd</sup> September) – the group has been transcribing the wills and inventories from Clapham Parish from 1541 to 1603.
- The Quiz Night (Friday, 2nd November) - with quiz master Stuart Marshall.
- “Wrong Un” (Thursday, 15<sup>th</sup> November) – by Red Letter Theatre (more info in the next newsletter).

Our AGM will be held on Wednesday, 3<sup>rd</sup> October at 7pm and everyone is welcome to attend. If you would like to get more involved in running the hall and planning new activities, let us know. We're always looking for new ideas. The hall is for the whole community to use, ranging from school activities and plays (the production of Joseph was superb!) to those many welcome 'coffee and a chat' mornings run by various groups. Facilities are available to book throughout the year.

Meanwhile, have a great summer - and don't forget to use the tennis court!

*Angie Martin*

### Clapham & District Newsletter

## Annual General Meeting

**Clapham Village Hall**

**7pm Tuesday 11<sup>th</sup> September**

**All welcome!**

If you would like to find out more about our village newsletter, have ideas about its future direction that you'd like to air, wish to contribute articles or would like to get involved with its management or production, then please come along.

**It's your newsletter - and your newsletter needs you!**

<p>Saturday 11th August 2018</p> <p><i>You Know Me</i></p> <p>Album Preview Party</p>  <p>Kevin McSherry with special guests</p>	<p><i>Clapham Village Hall</i></p> <p>Doors open 7.30pm</p> <p><b>Admission Free</b></p> <p>(Donations towards upkeep of hall welcome)</p> <p>Bar</p> <p><a href="http://kevinmcsherry.bandcamp.com">kevinmcsherry.bandcamp.com</a></p>
---	---

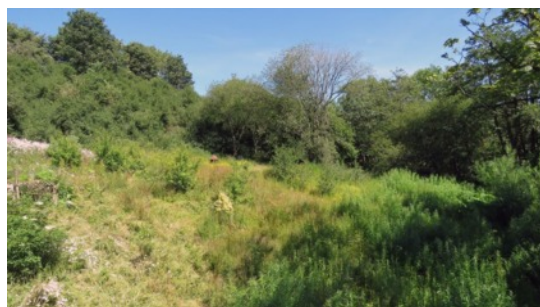


## Wildlife in Clapham

Riverbank Cottage Orchard is a one and half acre plot of land below Clapham railway station. The land is a mixture of the beginnings of a wildflower meadow, a marshy area and a few orchard trees. On the embankment there is a mixture of hawthorn and blackthorn and by the entrance gate a small herb/wildflower garden has been created. A small selection of wildflowers has already appeared over the past year naturally, including primroses, snowdrops, bluebells, red campion, ox-eye daisy, mullein, buddleia and ragged robin, and there are also other wildflowers which I do not know.



In the past eighteen months sixty three species of birds have been seen on the site or flying over. Seventeen species of butterflies and eight species of dragonflies/damselflies have also been recorded; of these one species of butterfly is a new record for the local area. The brown argus which was seen at the orchard on 28<sup>th</sup> May is a species which is spreading northwards slowly. It is similar to the northern brown argus, but that species feeds mainly on rock rose on sunny limestone/chalk areas and the few colonies in Yorkshire are sedentary. The brown argus feeds on wild geraniums which are common on field edges, railway embankments and other wild places. Both species are similar but it is through their different flight periods (the brown argus flies mid-May to mid-June and early July to late August, whilst the northern brown argus flies mid-June to late July), habitat and food plants that they can be separated. The brown argus was only seen on that single day.



Of the sixty three species of birds that have been seen, quite a few breed around or on the site. For summer

migrants we get willow warblers (one pair and two juvenile have been seen this year), chiffchaffs, blackcaps, garden warblers (one pair) and spotted flycatchers (one pair) all of which are attempting to breed.

Seven of the eight dragonflies/damselflies are quite common on or around the orchard, but on 29<sup>th</sup> May a banded demoiselle (damselfly) was found. They breed on slow moving rivers which the River Wenning is when it hasn't been raining heavily. This is only the fourth record I have seen of the banded demoiselle around the local area in the last ten years.

The orchard is open to all locals who are passing by, there is a small seated area by the gate or the marsh/pond

area, but beware there is still work going on beyond those areas.

One spotted flycatcher was seen at Chrissie Bell's house twice at the end of June and one green sandpiper was seen on the River Wenning near the orchard on 15<sup>th</sup> July.

*Tim Hutchinson,  
Smithy Cottage*

*Postscript: Young Sophie Bowker from Kings Langley, who was on holiday here, spotted a red squirrel by the beech tree at Ingleborough cave on 31<sup>st</sup> May at 3pm with the sighting confirmed by her dad.*

*Reported by Liz Mason*

### Advance notice

The village newsletter committee will be staging their first fundraising venture in the village hall so get the date in your diaries now! It will be on:

**Saturday 27<sup>th</sup> October**

and will take the form of a coffee morning with a few stalls.

Please get in touch with **Andy Scott** via [claphamnewsletter@gmail.com](mailto:claphamnewsletter@gmail.com) if you would like to run a stall. Further details next issue.

### HARRISON & CROSS LTD. NICEIC APPROVED ELECTRICAL CONTRACTORS

Unit 6, Sidings Industrial Estate, Settle

#### WHAT WE CAN DO FOR YOU!

##### THE ONE-STOP SHOP

Complete and partial rewires, electrical check on existing installations. Small appliance testing.

Visit our extensive electrical appliance showroom for chest freezers, larger fridges, washing machines, tumble dryers, dishwashers, cookers, microwaves and vacuum cleaners.

##### BRIGHTEN UP YOUR HOME

Our lighting showroom will give you all the latest ideas, we offer a free design service with installation if required.

Telephone: 01729 823423 Email: [harrisonandcross@gmail.com](mailto:harrisonandcross@gmail.com)

### KEVIN CHADWICK

On-site welding

Plant repairs

Vehicle repairs

Tyres & exhausts

Wax oil treatment

Unit 1, Dales View, Old Road, Clapham, LA2 8JH  
Telephone: 07779 081388



second helpings of pie followed later by the pros and cons of a double helping of meringue.

It is now nearly midnight on Street Market Day and I have to submit this report to my editor immediately or I shall be fired.

Alas our deadline comes before the final figures are in but Ron thinks that our takings were about £4,400, a slight

drop compared to last year but an excellent result when we take into account the poor weather.

It is a fitting reward for all the volunteers who put in so much effort under the able supervision of our Street Market Queen, Sue Mann.

*Stuart Marshall*



## Healthy Pet Club

To enable pet owners to spread the cost of routine treatment we have designed our own practice membership scheme

### Features:-

- 🐾 Annual Veterinary Health Check & Booster Vaccination
- 🐾 Annual parasite control
- 🐾 Free nurse clinics
- 🐾 Various discounts



No upper age limit & No joining fee

**01729 823538**

[www.daleheadvetgroup.co.uk](http://www.daleheadvetgroup.co.uk)



Plumbing Heating Renewables

## Howsons LTD

### Specialists in:

- Fire & security installations
- Electrical installations, inspection & testing
- Plumbing & heating installations & servicing
- Renewable installations & servicing
- Wi-Fi installations
- Home automation systems
- Automated gates and access control

E: [info@howsonsltd.co.uk](mailto:info@howsonsltd.co.uk)

W: [www.howsonsltd.co.uk](http://www.howsonsltd.co.uk)

T: 015242 41422



Security

Electrical

WiFi