

# CLAPHAM & DISTRICT NEWSLETTER



Number 119, June 2019

## Queen's Award for shop volunteers

Our shop and its enthusiastic community of volunteers has received The Queen's Award for Voluntary Service, 2019.

This is the highest award given to local volunteer groups across the UK in recognition of outstanding work done in their own communities. It is the MBE for volunteer groups.

Sue Mann, Chair of the Shop Committee said: 'I'm so proud of the community and what we have achieved together, building on the work of those who have helped us create the outstanding shop we have today.'

In just 5 years we have built a vibrant and sustainable community hub. This is an incredible effort and my thanks go out to all those people who have contributed, in so many different ways, to our success.'

In May, two weeks before the official announcement, Sue Mann and Liz Mason, one of the first volunteers, represented the shop at an event at Buckingham Palace which recognised public service across a wide range of fields. All the volunteers' names were put in a hat and Liz's name was picked out.

Liz Mason, who has been a volunteer since the beginning, said: 'It was a real privilege and I was delighted to be asked to represent the community. I really wanted to tell everyone we were going to Buckingham Palace, but we had to keep it secret until the Queen's official announcement in the London Gazette on 2 June'.

Across the whole of Yorkshire & Humberside only a handful of volunteer organisations receive this prestigious award each year, 250 across the country; this is such an

incredible achievement for a small community, such as ours.

Many of the shop volunteers and committee were involved with the inspection visit in January.

Two of the Deputy Lord Lieutenants for North Yorkshire visited the shop on behalf of the Lord Lieutenant, Her Majesty's representative in the county. They came to see the shop first-hand, unfortunately the timing of the visit coincided with the shop being closed for refurbishment. We were all a little despondent and thought it would affect our chances of success. However, we were far too pessimistic, the panel met the Committee and also came to a lively volunteer training session in the village hall and clearly, they went away very impressed with everything they saw.

Sue Mann said: 'This award recognises what we have achieved over the last few years and I am confident

the shop will continue to thrive with the support of our community for the foreseeable future'.

*Iain Crossley  
on behalf of the shop management committee*





# AIRE VALLEY *Glass*

*Job Done!*



- ◆ **PVC Doors** ◆ **Windows** ◆ **Composite & Stable Doors**
- ◆ **Bi-Folding Doors** ◆ **Sliding Sash Windows** ◆ **Roofline**

A Family firm established over 35 years, we supply and install top quality windows and doors in a range of colours and Farrow & Ball finishes, as well as Solidor & Rockdoor composite doors, and machined timber Masterdor doors. Call us for a free quotation and no pushy salesmen

origin  
DOORS AND WINDOWS

PREMIUM  
INSTALLER  
**Solidor**

Trusted  
**ROCKDOOR**  
Installer.

**CELSIUS**  
SOLID ROOF

**masterdor**  
**craftsman**  
Precision engineered timber doors

Bridge Road, Sutton-in-Craven  
Keighley BD20 7ES

**01535 634788**

[enquiries@airevalleyglass.co.uk](mailto:enquiries@airevalleyglass.co.uk)

Dalesview Business Centre  
Old Road, Clapham LA2 8JH

**015242 51705**

[www.airevalleyglass.co.uk](http://www.airevalleyglass.co.uk)



## At home at Hall Garth



It seems a long time ago that a massive tent suddenly appeared in the middle of the village and I suppose it would be fair to say that we have implemented a top-down model of renovation - starting with the roof and ending up with the new residents (both of whom could do with a bit of renovation themselves after their second move in a year!).

Hall Garth has brought with it many considerations - modernisation, environment, practicality, office, home, history and family. Annie's support has been hugely appreciated alongside that of our very long-suffering neighbours and near neighbours. You have all been more than generous and we cannot thank you enough.

JMP architects and Adam Carr's team have been exceptional. They have been a pleasure to work with; always professional, polite and friendly and doing their best to minimise inconvenience to the village. We count ourselves as very fortunate.

Apart from all the work on the house, the team have also done a great job supporting the village shop and we hope they will regularly divert off the A65 to call in and stock up!



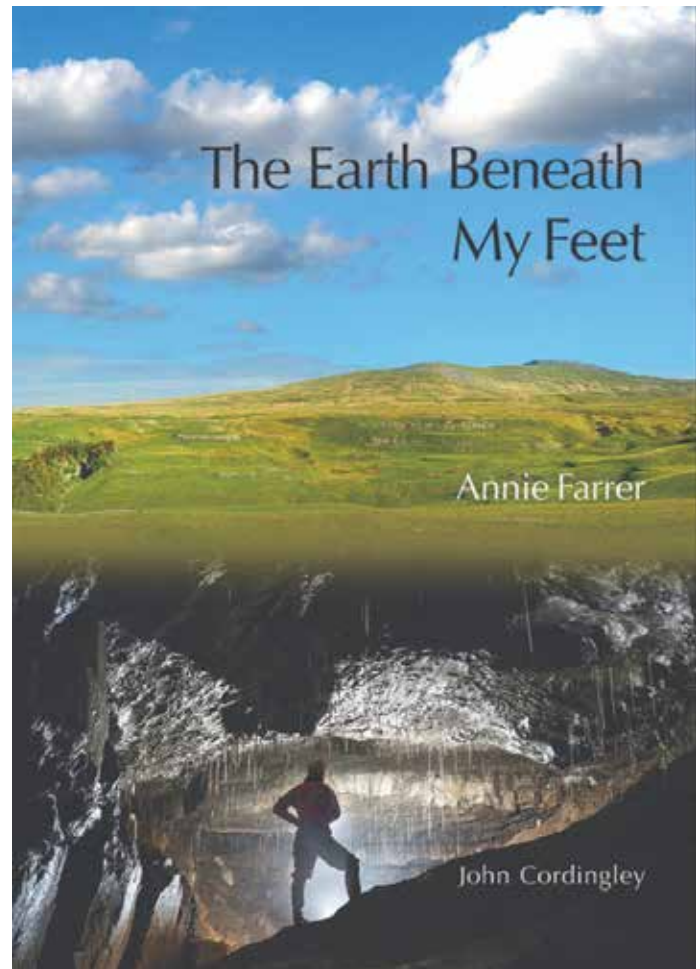
So now the tent has gone, the roof no longer leaks, the front of the house has had a good face-wash and the inside has had a bit of a makeover.

A lot of the main fabric of the house hasn't changed at all and the important architectural features have been maintained. We hope Dr John and Mrs F would approve.

If the gates are closed it is not to keep friends out, but to keep dogs in! Both the Estate Office and the house have already been put to good use for various meetings and the building site has, once again, become a family home. It's been a bit of a process but ... at long last ... we are in!

*Philip and Maria Farrer*

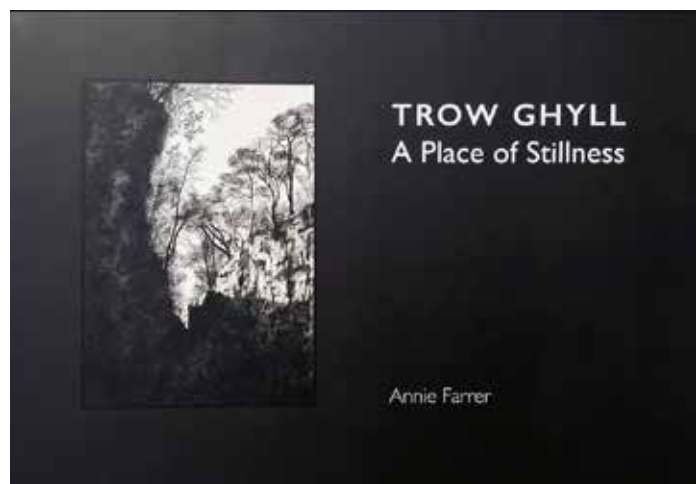
## New books



There are two new books to look out for. Based on the slopes of Ingleborough, **'The Earth Beneath my Feet'** by Annie Farrer and John Cordingley is a concertina type book with writing and drawings overground by Annie and John's text about the experience of cave diving with images by a number of notable cave photographers.

Available from the Millenium Trust priced £24, (£4 to Cave Rescue.

**'Trow Ghyll, a Place of Stillness'**, also by Annie, is a 13.5 feet long concertina type book of intricate drawings of the skyline and cliff face of Trow Ghyll.





Organic Market Garden – Home Delivery  
Farm Shop

[WWW.GROWINGWITHGRACE.ORG.UK](http://WWW.GROWINGWITHGRACE.ORG.UK)

015242 51723

FARM SHOP AND NEW ON-SITE CAFÉ: TUES TO SAT 9-5PM  
A65 Clapham – Follow the carrots! 

## Settle Chimney Sweep Services



4 Craven Terrace  
Settle BD24 9DB

supplier of pots, cowls & bird nets  
Tel. 01729 823683  
Mobile. 07815 285321



Knitting Needle Craft Haberdashery Sewing Card Making Sewing Machines

## Cottontail Crafts

"a paradise for crafters"

Sue & Steve Amphlett

[www.cottontailcrafts.co.uk](http://www.cottontailcrafts.co.uk)  
[sue@cottontailcrafts.co.uk](mailto:sue@cottontailcrafts.co.uk)  
01729 822946

16 Duke Street Settle North Yorkshire BD24 9DN



## Mark Watson Home & Garden Maintenance



Digging, fencing, hedge trimming, mowing,  
paving, planting, power washing, spraying,  
strimming, turfing, gutters cleared. Loft  
insulating, pointing, rendering, painting.

No job too small, reasonable rates,  
estimates given.

07759 680938 • 07759 680943  
Low Bentham 015242 62038

## JAMES MARSHALL

Joiner & Carpenter



Established 1988

WHITEFRIARS HOUSE • SETTLE

Telephone 01729 554074

Mobile 07813 117814

Email [jmarshalljoinery@gmail.com](mailto:jmarshalljoinery@gmail.com)

## Home Barn Foods

Outside catering for all events  
**Lucy Knowles**



Fiach Cottage, Feizor, Austwick,  
via Lancaster LA2 8DF

Telephone:  
01729 825626 or 07738 922 524



## MOPS & MITRES

Domestic & Estate Services 

Telephone: 015242 51502

Email: [davidinclapham@googlemail.com](mailto:davidinclapham@googlemail.com)

Domestic (Denise): 07577 620812 Estate (David): 07974 972615

Over 25 years experience

Domestic cleaning, DIY, Grass cutting, Strimming, Knapsack spraying,  
Chainsaw / Joinery jobs and more !... just ask



Advice support and social opportunities  
for older people and their carers.

Cheapside, Settle, BD24 9EW

Tel: 01729 823066

[www.ageuk.org.uk/northcraven](http://www.ageuk.org.uk/northcraven)

Registered Charity number: 1141867

## Parish Council news

### 23 April, 2019 - Parish Council Meeting

There was no Police representative in attendance but written reports were received setting out details of incidents that had occurred in and around the Parish in the preceding two months. These included road traffic offences, a road traffic collision and several instances of suspicious activity.

In relation to highways matters, the clerk was instructed to report defective road markings on the B6480 on the Southern approach to Clapham. It was noted that North Yorkshire County Council had declined to repair a damaged bridge on the road between Newby and the B6480 and that it had acknowledged a report of dangerous stepping stones on the River Wenning on the path between Crina Bottom and Lawsings Brow. The clerk was instructed to liaise with Craven District Council over the possible siting of extra waste bins in the Parish.

Updates were received about the project to restore the ornamental drinking fountain on Riverside, Clapham and the Neighbourhood Planning initiative. The former is held up for the moment and the pipe which had been placed in Clapham Beck has been rolled up out of sight. The latter is progressing towards the writing of the plan after analysis of survey results.

The meeting was informed that completion of the hyper-fast broadband project is held up because the completion of road crossings is awaited.

### 28 May, 2019 - Parish Council Annual and Regular Meeting

The meetings were well attended with up to eleven members of the public present throughout the proceedings as well as North Yorkshire County Council, Craven District Council and police representatives.

At the Annual Meeting, Cllr Colin Price was re-elected as Chairman of the Parish Council and Cllr John Dawson as Vice-Chairman. Councillors were also assigned various responsibilities involving outside bodies.

At the start of the regular meeting, the Council received an update on behalf of the Friends of Clapham Station. It was informed that more trains are now running in the mid-morning and evening periods.

The police gave a report describing a busy period since the last meeting. They had dealt with seventeen incidents in the locality: animals wandering on the road, reports of suspicious vehicles, three burglaries, an obstruction of the underpass and two instances of violence, one being of a serious nature. Neither of the last mentioned matters involved residents of the parish.

Substantial public concerns were raised regarding visitors from the travelling community being allowed to park in dangerous or obstructive positions without police intervention. The police representative reported that there had only been one complaint and this had been dealt with. Public concerns were raised about crime in the area which has risen substantially in recent months. In the discussions

Councillors have been asked to consider the provision of extra defibrillators in the Parish and were in favour of the suggestion. The clerk was instructed to investigate purchase of the same.

The Council noted that the Internal Audit had been satisfactorily concluded. A donation of £100 was authorized to the Friends of Clapham School PTA.

In relation to planning matters, the Council supported amendments to the previously approved plans for development on Station Road, Clapham. It also supported plans for conversions to dwellings at The Barn and The Dairy, Hammon Head Hall, Hollin Lane.

There was some discussion of the consultation on the closure of Clapham C of E Primary School to which members of the public contributed. It was noted that the Council's response had been submitted and that there had been a good response from the Parish. The meeting was informed that some positive signs were emerging from the process so far.

Before closure of the meeting an update regarding issues connected with Clapham Railway Station was received. This covered arrangements for those who are disabled and travelling towards Lancaster, possible painting of the bridge and installation of artwork on the station.

that followed, a lack of police resources was identified as a problem. The police representative suggested that those affected or interested participate in the Rural Watch initiative. The Clerk was instructed to write to the Police and Crime Commissioner over rising crime rates.

In relation to highways matters the Council noted that the village signs on the approaches to Clapham may require replacing and undertook to assess the state of the signs. It was further noted that a parishioner had complained of obstructive parking in Clapham over the Bank Holiday weekend but concluded that no general restrictions were likely to solve this problem.

The Council carried forward its plan to install further defibrillators in Clapham and Newby.

The Council received the Internal Audit report for the financial year 2018-19.

In relation to planning matters, the Council considered an application for a greenhouse at Dubsyke, Keasden and had no objections to the proposal. It was also noted that permission for the removal of a rowan tree from Clapdale Way had been given by the Yorkshire Dales National Park Authority. Concerns were raised over an application to site a detached house on land adjacent to Fountain House Farm because no notification of the application had been received by the Parish Council. The Clerk was instructed to take this up with Craven District Council.





**SLEEK**  
Hair Design By Carol Lawson  
Mobile Hairstylist

Sleek Hair Design ... with over twenty years of local salon experience I can offer you & all the family the benefits of today's hairstyling in the comfort of your own home.  
For bookings & more information  
Call 078143 23578

**PREP Therapy**

NUTRITIONAL Therapy | LIFESTYLE Management  
COOKERY Consultants | CORPORATE Mentoring



Kirkby Lonsdale & Ingleton  
[www.preptherapy.co.uk](http://www.preptherapy.co.uk)  
[info@preptherapy.co.uk](mailto:info@preptherapy.co.uk)  
@preptherapy  
07515777859

f @ t in

**Beckside Yarns & Needlecrafts**

A gallery full of fabulous yarns by:

NORO  
DEBBIE BLISS  
ROWAN  
LOUISA HARDING  
BERGERE DE FRANCE  
STYLECRAFT  
.....and many more




Help and advice always on hand  
Call 015242 51122  
Beckside Gallery, Church Avenue,  
Clapham, North Yorkshire, LA2 8EA  
[www.becksideyarns.com](http://www.becksideyarns.com) [becksideyarns@gmail.com](mailto:becksideyarns@gmail.com)



**SMART SIGNAL**

Aerial & Satellite Installation & Repair  
Wi-Fi & Home Network  
CCTV Installation



Ben Fawcett  
M: 07950 028 622 • T: 015242 62017  
E: [smartsignal@outlook.com](mailto:smartsignal@outlook.com)  
W: [www.smartsignal.co.uk](http://www.smartsignal.co.uk)

**i print**

**YOUR LOCAL DESIGN & PRINTSHOP**



20 STATION ROAD • SETTLE • BD24 9AA  
**TEL: 01729 823990**

[hello@iprintshop.co.uk](mailto:hello@iprintshop.co.uk)  
[www.iprintshop.co.uk](http://www.iprintshop.co.uk)

f @ t

# Church news

## John's Notes: Prayer - a simple breathing exercise



Dear God.  
These circumstances will change.  
This situation shall pass. Amen

A man sits alone on a park bench, with clouds and stars floating just above him: and a tiny moon, which may be a banana. All these things seem to indicate the man's state of mind. He is gloomy, perplexed, perhaps a little crazed in his mind. But at his feet, on the scrubby soil some tatty flowers bend in his direction and a friendly dog

(or fox?) looks attentively into the man's eyes.

Of all the great prayers in the world many of my favourites are those composed by the Australian newspaper cartoonist Michael Leunig. This is one of them, taken from his book *A Common Prayer - a cartoonist talks to God*. I love them because whilst they are so simple, yet they say so much for us. I suspect that the best prayers are simple. Besides Leunig, the other profoundly simple pray-er-s who I love are the ancient Celts, whose prayers have come down to us via collections such as the *Carmina Gadelica* ('Songs of the Gaels'). These folk, our forefathers and -mothers, would say



God bless the lost, the confused, the unsure, the bewildered, the puzzled, the mystified, the baffled, and the perplexed. Amen

a prayer each morning whilst kindling the fire or making the bed, inviting the Holy Trinity into their day from the beginning; or on leaving the house each morning to tend their animals or take to their fishing boats, they would invoke God for protection on their way. "Bless to me, O God, each thing mine eye sees," they would begin. And

so their whole world became a source of blessing.

Between Ascension and Pentecost the international Christian community is invited to join in something called 'Thy Kingdom Come'. There are many high-profile events taking place for people to attend (in our diocese, one at Ripon Cathedral, 3.30pm on 2 June) but the project is essentially to encourage us all in prayer. Prayer together; prayer alone; prayer at home; prayer in church. Prayer on a park bench or prayer on the bus. Prayer where we are.

Why pray? The hymn writer James Montgomery suggests that for a Christian, prayer is as natural and essential as breathing: "Prayer is the Christian's vital breath, the Christian's native air..." It's what keeps alive and active our connection to God - and the world God has given us to be in here and now. So in this season, how about trying some breathing exercises - they are as simple to perform as Michael Leunig shows.

Revd John Davies, Priest in Charge  
[john.davies@leeds.anglican.org](mailto:john.davies@leeds.anglican.org). 01524 805928  
Read more from John at [bit.ly/johndavies-talks](http://bit.ly/johndavies-talks)

## Anglican Services in June and July

	Clapham	Austwick
Jun 2	Holy Communion at 11am	Holy Communion at 9.30am
9	Holy Communion at 11am	Morning Prayer at 9.30am Holy Communion at 6.30pm
16	Holy Communion at 11am	Holy Communion at 9.30am
23	Holy Communion at 11am	Holy Communion at 9.30am Messy Church 11am-1pm
30	United service at Keasden Church in the Pub - 7pm New Inn	United service at Keasden at 10.30am
Jul 7	Holy Communion at 11am	Holy Communion at 9.30am
14	Holy Communion at 11am	Morning Prayer at 9.30am Holy Communion at 6.30pm
21	Holy Communion at 11am	Holy Communion at 9.30am
28	Holy Communion at 11am	Holy Communion at 9.30am
	Keasden	Eldroth
Jun 2	Holy Communion at 11am	Holy Communion at 9.30am
9	Holy Communion at 2pm	No service
16	No service	Evening service at 7pm
23	Evening service at 7pm	No service
30	United service at 10.30am	United service at Keasden
Jul 7	Holy Communion at 11am	Holy Communion at 9.30am
14	Holy Communion at 2pm	No service
21	No service	No service
28	Evening service at 7pm	Evensong at 7pm

## 'Monday Morning Prayers'

9.00am each week from June onwards

I will be offering time for prayer in Clapham church on Monday Mornings, on an ongoing basis. The format is a simple, spoken service with bible readings, lasting about 20 minutes.

## 'First Sunday' Worship - a simple service for Sunday evenings

Our four churches and Newby Methodist Church are joining together at 6.30 pm on the first Sunday of each month. Meeting for an hour of informal worship - singing, prayer and a discussion (led by either Revd John or Revd Stephen Caddy - Methodist Circuit). Our theme for the first few months is The Beatitudes. First service - **Sunday 7 July** at Newby Methodist Church, with the theme 'Blessed are the poor in spirit'.

## Bethel Chapel, Cross Haw Lane, Clapham

### Sunday services

Junior Church 10.15am, Services 11am and 6.30pm

### Weekdays

1st Thursday Senior Citizens at 2pm

3rd Thursday Fellowship at 2pm

4th Thursday Coffee Evening at 7.30pm

### Children's activities

Mums & Tots Friday 9.30 to 11am

Kmotion (primary school children) fortnightly Fridays at 6pm

Encounter (9 years plus) fortnightly Fridays at 7.30pm

### Special notices

Walks on Friday evenings, if interested - please find us on

Facebook under Bethel Chapel.

14 June - Cupcake Day for Alzheimers 9.30 - 11am

27 June - Coffee evening with Longton Family 7.30pm

5 July - Family Fun night 6.30 - 8pm

31 July to 4 August - Sportsreach soccer school

## Methodist Church, Newby

Usual service pattern - 1st Sunday in month at 2pm, all other Sundays at 11am

# Escapebikeshop

- Fully equipped service & repair workshop
- Demo & hire bikes available from £50
- On site test track
- Free on site parking for local trails – Park & Ride!
- Members of Bike2Work & Cyclescheme
- 0% finance available up to 36 months
- Stockists of Specialized, NS Bikes, Santa Cruz & Whyte



[www.escapebikeshop.com](http://www.escapebikeshop.com)

015242 41226 – Kirksteads, Westhouse, Ingletton, LA6 3NJ

Mon – Fri: 10-5 / Saturday: 9:30-5:30 / Sunday: 10-4

## Bridge Cottage B&B



Five-star rated. Two double bedrooms with en suite shower plus one superking/twin with ensuite bath and separate shower. From £40 per person. Home-baking. Great choice of cooked breakfasts, all freshly made from local produce. All diets catered for. Dog-friendly. Gift vouchers for any amount now available.

Telephone 015242 51506

[www.bridgecottageclapham.co.uk](http://www.bridgecottageclapham.co.uk)  
Station Road, Clapham LA2 8DP

The Original

# LOGSDIRECT

We offer local, independent advice.

Try our NEW products

- Coffee Logs • Evening Lighters
- Yorganics Compost • Brackenburn Brackettes

- Mushroom Compost • Top Soil
- Bark • Kiln Dried Logs
- Firelighters • Smokeless Fuel • Pellets
- House Coal • Kindling • Firelighters
- Wood Pellets • Briquettes

Free local delivery (min order required)

Visit us at: Logs Direct Ltd, Brooklands Farm,  
Addington Road, Lancaster, LA2 6PG.

Tel: 01524 812476 Email: [enquiries@logsdirect.co.uk](mailto:enquiries@logsdirect.co.uk)

[www.logsdirect.co.uk](http://www.logsdirect.co.uk) [www.theologyard.net](http://www.theologyard.net)



- **Tearoom**  
serving lovely homemade food
- **Garden Centre**
- **Reclamation Centre**
- **Luxury Craft Courses**

Wigglesworth, BD23 4SN

01729 840848

[www.BeAGardenMaker.co.uk](http://www.BeAGardenMaker.co.uk)

Find Us on the Settle to Sawley Road



## Congratulations



Congratulations to Anne-Marie Townley and Andrew Talbot as they celebrated their wedding on 3rd May at the Bethel Chapel.

## Keasden Lambing service



*Photo: Ann Sheridan*

The Lambing Service led by Revd John Davies welcomed over 50 people to Wenningside Farm and included the blessing of farmers, sheep, lambs and sheepdog.

## Northern Explorers Forum



On Sunday 7th April, the Village Hall hosted the first ever Northern Explorers Forum where those who are actively involved in looking for and exploring new caves – and extending those already known – could share news of their work and update others on developments.

The event was very well received – over 100 delegates packed the hall for a program that lasted all day and covered all caving areas across northern England, from the hills above Cowan Bridge across to the North York Moors, and from this area to as far north as Alston. Discoveries over the last several years were presented, including a system first entered by lead miners and then forgotten, but recently re-explored and discovered to contain enough passages to be ranked fourth largest cave in the area.

It's hoped to repeat this event every couple of years - hopefully the Village Hall will be able to host the next forum in 2021.

*Andy Scott*

## Neighbourhood Plan: Survey

The Neighbourhood Plan Steering Group would like to express their thanks to everyone who completed the long and detailed questionnaire. 177 were completed out of approximately 350 households in the parish, 18 online.

The Centre for Facilitation has written a draft report. Once the report is finalised it will go live on the Clapham Plan Website ([www.claphamplan.net](http://www.claphamplan.net)).

The report provides the evidence base on which we can build our Plan. For example, it's given us a very good idea of the extent of homeworking in the parish.

It has also raised key issues that the plan has to address. The most significant of these is retention of young people in the area when housing is so expensive and well-paid jobs are so scarce. Here, the steering group hopes to be able to work with CDC and the YDNPA in formulating policies, as both are currently working on initiatives in this area.

Another concern is the lack of housing for older people when they are ready to downsize. Isolation is of increasing concern for the older generation. They should not be compelled to move from a friendly community where many have lived for most of their lives if they do not wish to do so.

We will be contacting stakeholders shortly to move the process forward.

*Ann Sheridan,  
on behalf of the Steering Group*

## Time out

The farming year rolls on and we are now into the early part of summer which is expected to bring with it a different set of agricultural disasters, all equally capable of causing cardiac arrest.

In early summer, the sheep with one lamb have gone onto mount Ingleborough while the sheep with two lambs stay on the inland. There, the grass is of better quality and it makes it easier for her to produce a reasonable amount of milk to keep the twins thriving.

When the sheep have gone up the mountain, it allows us to close off some of the better fields from grazing and use the grass for silage or hay.

Normally preparing for winter takes all summer. When the field is first cleared of sheep, it will be "picked". On our farm that means walking round all the wall sides and any stones that have fallen from the wall are put back in order to avoid them going through the mower or into the baler. Machinery is hugely expensive (like vets and mechanics) and a decent sized stone can stop a baler for the best part of an afternoon while various bits of metal are either replaced or knocked back into shape. The whole thing leads to shocking language and skinned knuckles as a spanner that doesn't quite fit slips. Often by this point the rain has started.

From taking the sheep out to having enough grass to cut can take about four or five weeks and some farmers take this opportunity to have a few days away from the farm, a little break following a long winter and busy lambing time.

Historically, having a holiday in the farming world was seen as being a bit "soft". One of my distant relations was always very proud of the fact that he never missed milking his cows for 22 years (which included his honeymoon) and I never saw a more content chap, burning up the air miles wasn't for him. Certainly, my Dad never travelled over the water and never appeared to want to. He was happy with the occasional day out and home for "cow time". Often the day out was connected to farming, for instance a local agricultural show. It illustrates how the farming life is in the very soul, or farmers are just a bit bonkers.

A farmer on holiday is a sight to behold and usually easy to spot. For instance, up to the elbow their arms are burnt brown from years of wearing sleeves rolled up to that part. Suddenly much more skin is exposed to the Spanish sun and for the first day or so the skin is blindingly white before turning bright pink because he "doesn't believe in sun cream, never uses it at home". On closer examination, the lobster pink hairy legs have a bald patch about the top of his calves where the wellies have rubbed all winter.

Normally the first two days of any holiday are spent

asleep. Sam comes and goes unnoticed, the only criteria is to be in the restaurant in enough time to do the full English justice before breakfast time is finished. By day two or three, with the help of a gallon of aftersun, the pink legs

are calming down and he may venture out to try and find some grass to walk on, although it's not the same in flip flops or sandals (both of which should be banned for the male sex). Before long he is engaging with the locals and soon has a fair knowledge of any local farming, especially if it involves livestock. Farmers all over the world compare notes and not speaking the same language is not considered a barrier. By the end of the week he is happy helping to make silage or drive the combine.

The job at Bleak Bank which I consider marks the beginning of summer is shearing the tups. This can happen in mid-June, weather permitting. It's a desperate struggle and it's never easy to see who is shearing who; it often imitates hand to hand combat. When eventually the tup is on his bum, as he needs to be for shearing, he is as tall and certainly as heavy as the shearer but not nearly as worn out.

It seems to me that wool is a quite remarkable natural sustainable product. It grows for free on mountains such as Ingleborough, it insulates, is fire retardant, carpets made from it can last a lifetime and yet it is of little financial value to the producer, quite remarkable.

*John Dawson*



A WARM WELCOME AWAITS AT



THE NEW INN - OLD ROAD CLAPHAM LA2 8HH

Your fabulous local has undergone a marvellous transformation with great beers and a fantastic new menu freshly prepared to bring you the best drink and dining experience.

**FANCY A LUNCHTIME TREAT?**  
**2 courses for £8.00**

Monday to Friday  
from 12 until 2pm

*why not come and  
meet Chris, Jackie  
and the team and  
enjoy a treat on us?*





## School report

It may have been a very short half term of only 4 weeks but it has definitely been one to remember, not least as a result of the unprecedented decision which was arrived at on 30th April; Clapham C of E Primary School will remain open due to a huge community effort in putting forward a recovery plan which aims to secure the future of the school. I know there is much relief within the entire community and now we are looking forward to facilitating this plan and beginning the work to further develop the school.

This half term has been a hard working one, not least because our Y6 and Y2 children have completed their national tests and other year groups are gearing up for their end of year assessments just after the half term holiday. Alongside all of this we have also managed to squeeze in some enjoyable events and learning. In Class 2 children have been designing and making clay tiles based on their topic work. It has been lovely to see the progression of this work and I'm looking forward to seeing the tiles once they've been professionally fired and glazed. Class 1 have also been developing their artistic skills when they produced their own version of Vincent Van Gogh's painting 'Sunflowers.' To achieve this they used a mixture of watercolour washes and oil pastels which were very effective. Last Friday morning, all the children paid a visit to the Village Hall to view the Clapham Village Art Exhibition – something they were all looking forward to. I am sure they will have found some

new inspiration from the works of art on display there. Also on Friday, the Y6 children embarked on an expedition to climb Ingleborough alongside other local Y6 children from neighbouring schools.

I would like to finish this piece with an update on current school developments from our Chair of Governors to ensure that everyone is aware of the current position of the school. On Sunday 19th May, Michael Ravey wrote:

“The Board of Governors met late last week for the first time since the great news about the consultation. One product of this meeting was our first cut at the strategy for moving the school forward. This involves the development of a number of work streams which will each be led by a Governor. Further meetings have been set for next week to establish terms and conditions for each of these streams. Once this task has been completed I am certain that each of the Governors responsible for a work stream will be looking for people to join their particular group. May I thank, in anticipation, those people from the community who feel they have the skills and enthusiasm to help at this exciting time for the school.”

If you know of someone who you think would be interested in joining us please feel free to contact the school at [admin@clapham.n-yorks.sch.uk](mailto:admin@clapham.n-yorks.sch.uk)

*Katherine Marshall,  
Acting Head Teacher*

## School prepares for the future

On 16 May the school governors met with North Yorkshire County Council and the Leeds Diocese to begin a new future for the school following the successful campaign to stop the closure and keep Clapham Primary School open for future generations of local children.

Now the future is secured, the Friends of Clapham School, which is a registered charity set up by parents and members of the community, want to make speedy progress with the Educational Fund and to support the school with fundraising.

Zoe Richardson, Chair of the Friends, said: ‘We are grateful for all the support we have had from the community and the school governors for the benefit of local children.

The school provides an excellent education for our daughter who benefits from the close support from the teachers.’

The Fund is to enable the school to remain solvent during the recovery period. Some people have asked what happens to the fund if the school recovery plan falters. Obviously, the community relies upon the skill and dedication of the governors - but please be assured the trustees will not release any funds to the school until they have received assurance

from the governors that the plans are progressing. If this is not the case, and the fund has to be wound-up, then any unused funds will be returned to the donors in proportion to the amount they donated.



Iain Crossley has registered the Educational Fund for gift-aid although we have yet to receive formal confirmation from the tax man. In the meantime, we still need donations and promises; anyone wishing to help the school can contact Iain Crossley at Old Manor House, The Green, Philip Farrer at Hall Garth or send an email to [info@friendsofclaphamschool.org.uk](mailto:info@friendsofclaphamschool.org.uk)

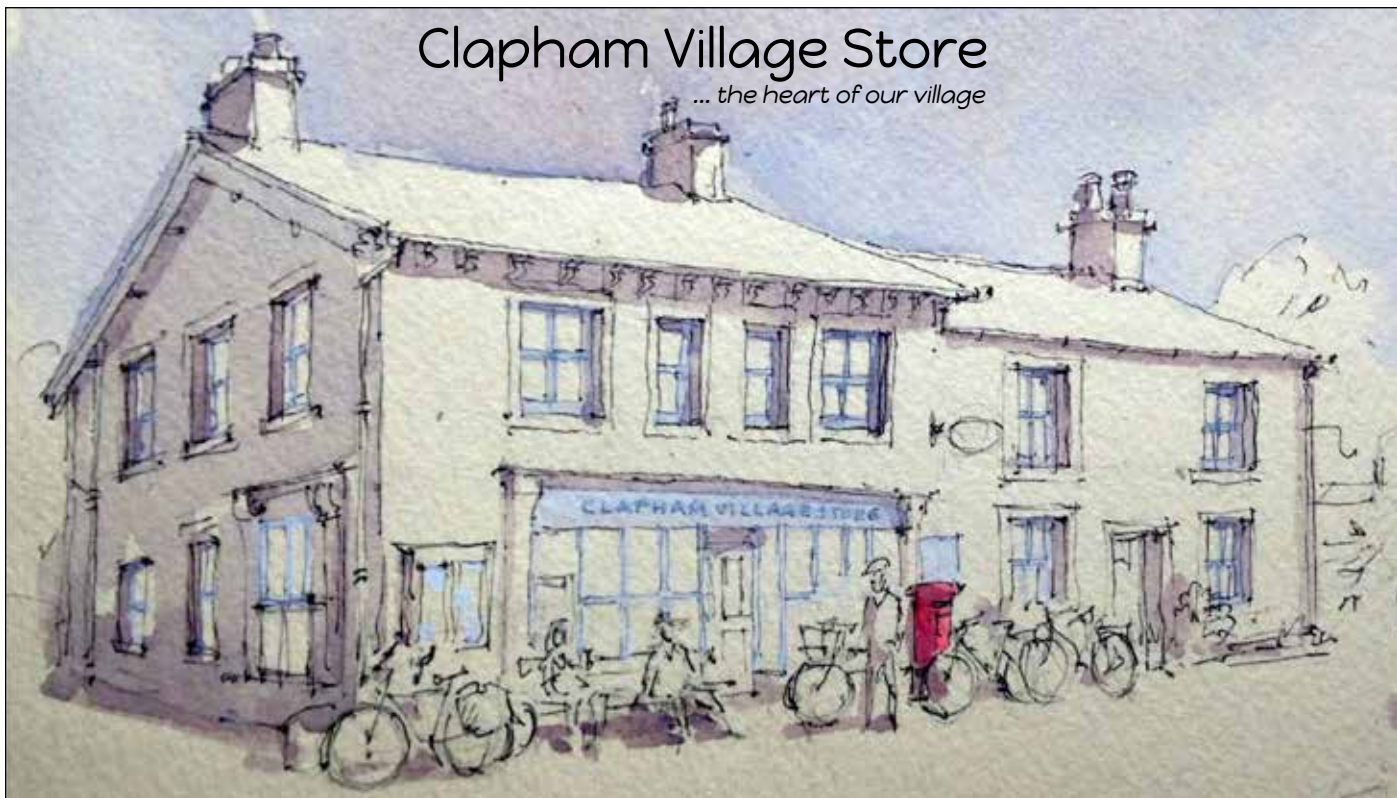
The Friends would like as many members of the community as possible to join and we are looking for a volunteer to be secretary; please get in touch with Zoe Richardson at [info@friendsofclaphamschool.org.uk](mailto:info@friendsofclaphamschool.org.uk) and you can follow us on Facebook - Friends of Clapham School and visit our website: [www.friendsofclaphamschool.org.uk](http://www.friendsofclaphamschool.org.uk)

*Iain Crossley,  
Trustee, Friends of Clapham School*



# Clapham Village Store

... the heart of our village



Summer Opening Hours from April 1<sup>st</sup>  
 Mon, Tues, Wed & Fri: 8am - 5.30pm  
 Thu: 8am - 7.00pm  
 Sat & Sun: 8am - 3.30pm

Main Street, Clapham, LA2 8DP  
 Tel. (015242) 51524  
[info@claphamvillagestore.co.uk](mailto:info@claphamvillagestore.co.uk)  
[www.claphamvillagestore.co.uk](http://www.claphamvillagestore.co.uk)

## Peter Allen FLOOR COVERINGS LTD

UNIT 2, SOWARTH FIELD INDUSTRIAL ESTATE, SETTLE, BD24 9AF  
**01729 825122**

Mon-Fri 9am till 4.30pm Sat 10am till 12.30pm  
[info@peterallenflooring.co.uk](mailto:info@peterallenflooring.co.uk)

### WITH OVER 30 YEARS EXPERIENCE.

- ♦ Domestic & Commercial Flooring.
- ♦ Amtico and Karndean Design Showroom.
  - ♦ Made to Measure Blinds.
  - ♦ Beds and Mattresses.
  - ♦ Rugs.
- ♦ Bespoke Furniture, Harris tweed/Abraham moon.
  - ♦ Solid Oak & Pine Furniture.
- ♦ We offer a Free measuring service.
  - ♦ Ample Free Parking



Amtico  
 One Exclusive Retail Partner



Karndean  
 Designflooring



## The Strong and Steady group



A PROGRAMME DESIGNED TO  
ENCOURAGE PEOPLE TO BE MORE  
ACTIVE AND REDUCE THE RISK OF  
FALLS AND INJURIES



For details on weekly classes  
near you contact  
Jill Eccleston, your local  
qualified instructor:

Tel: 07955 342344  
jilleccleston@hotmail.co.uk

IMPROVE BALANCE & STRENGTH + INCREASE CONFIDENCE & INDEPENDENCE  
IMPROVE STAMINA & ENERGY LEVELS + IMPROVE COGNITION

Specialist postural stability instructor Jill Eccleston is one of 15 partners throughout North Yorkshire chosen to deliver therapeutic exercise classes named 'Strong and Steady'.

North Yorkshire Sport, Age UK, and local GPs and physiotherapists are working with Settle-based Jill to refer eligible participants into any of the weekly classes she now delivers in the Craven area or you can simply refer yourself or a partner in!

The main aim of these progressive and prescriptive classes is to teach exercises to increase physical activity among people aged 65-plus and to reduce the risk of falls and injuries. Class participant's feedback also shows after only a three month attendance a reduction in loneliness and improvement in the mental wellbeing.

Jill also works with individuals with a range of conditions including dementia, Parkinson's and MS in their own homes giving careful 1:1 instruction, sometimes prior to group participation.

### Class details:

Limestone View Lounge, Settle Thursdays 10.45-12noon and Fridays 11.30-12.45 £6 includes equipment, home learning booklet and tea and biscuits.

Clapham Village Hall most Thursdays 1-2.15pm £8 includes equipment, home learning booklet and tea and biscuits.

## Thank you



The Table Top Trail to raise funds for Clapham Primary School on Saturday 25 May was an amazing success with over £800 at time of going to press.

Thank you to everyone for their help and support.

*Trace Bilton  
on behalf of  
Friends of Clapham School*

## Side by side

Can you support people living with dementia whilst doing the things that you love? Alzheimer's Society's Side by Side service in Craven is looking for volunteers to pair up with people affected by dementia who share a common interest. This initiative was designed in response to Alzheimer's Society research that shows that people with dementia are more at risk of loneliness than the general population – with a third reporting to have lost friends since their diagnosis. Two thirds of people with dementia remain in their communities, but many feel trapped in their own homes - with almost one in 10 only leaving the house once a month.

Side by Side has proved so popular with people living with dementia that the charity is urgently calling on more volunteers to be paired up. Do you wish you made a bit more time for your hobbies? Join Side by Side to find that time as well as meeting someone new. Volunteering can be weekly, fortnightly or monthly and can happen in the evenings and at weekends. Activities currently enjoyed by our pairs include theatre trips, gardening, walking and cooked breakfasts!

Loneliness is a real problem for people with dementia, yet we know that one of the most important things for those affected is to remain part of their community and continue to do the things they love – from going shopping to enjoying a football match.

By 2021, over 1 million people will be living with the condition, so it's vital that we all unite against dementia and do what we can to make a difference, such as becoming a volunteer. To find out more call 01274 586800 or email [sidebysideacw@alzheimers.org.uk](mailto:sidebysideacw@alzheimers.org.uk) or contact me, on 07889 603919.

*Kate Woodfield*

Could you help someone with dementia  
do the things they love?

Volunteer for our Side by Side service

01274 586008

[sidebysideacw@alzheimers.org.uk](mailto:sidebysideacw@alzheimers.org.uk)



## Saint James Church, Clapham

**Saturday, 15 June, 7.30pm**

Clapham Village Hall

Poetry, Prose,  
Pies, Peas and Puddings



with John Dawson, John Davies and  
a supporting cast

Tickets £8 from Clapham Shop  
Bring your own drinks and glasses



# B&W Funerals Ltd

James G Macdonald

Private Chapel of Rest  
24 Hour Service



Ingleton, Burton, Bentham, Austwick, Clapham,  
Settle, Wray, Hornby, Caton, Kirkby Lonsdale  
& all the surrounding areas

*We offer our own Funeral Plans on request*

39 Main Street, Ingleton, Carnforth LA6 3EH  
jmfunerals@gmail.com

Tel: Office 015242 41293  
Home: 015242 61370 Mobile: 07758 002260

## ANYONE FOR TENNIS?

Why not come to ...

### CLAPHAM TENNIS COURT

It is situated at the rear of the Dales National Park carpark and you can obtain the key from reception at the 'New Inn'. We can also loan you racquets and balls (returnable deposit required).



Nominal cost of £5 per 2-hour session (£2 for locals) or join the Tennis Club for £20 per year and get your own key so you can play whenever the court is free. For membership information contact David on 51240 or 07711 730819.



## Clapham Community Shop Limited Annual General Meeting

**Wednesday 3 July  
at 6.30pm**

**Clapham Village Hall  
All Welcome**

### Charity Art and Craft Sale

To all you arty and crafty people ... I am organising a sale for two charities, Alzheimers Society and Cancer Research. I have had promises of jewellery, cards, paintings, prints, handmade knits, wood carving and wood turning. I am sure there are more who could produce arts or crafts that could be included in the sale. The proportion of the sale price for each item to be donated can be chosen by the maker.



The sale will take place...

Saturday 7<sup>th</sup> September  
10.00 – 12.30  
Clapham Village Hall

Any queries to Chris Horsewill  
Tel. 01524251716  
E mail ajhnottm@gmail.com



## Clapham & Newby Village Hall Regular Events

Monday  
Afternoons  
1.30 – 4pm

### BOWLS

Mrs Denne  
015242 51617

Tuesday  
Evenings  
7pm  
(Wednesday  
mornings in winter)

### CLAPHAM ART GROUP

Linda Clemence  
01729 823767

4<sup>th</sup> Tuesday  
of the month  
7.30pm

### PARISH COUNCIL

Nigel Harrison  
015242 51165  
njhar@gmail.com

Wednesday  
Evenings  
7pm

### ChirpYOGA

(Trial to determine viability  
– please support!)

Susanne Thomas  
07957 152957  
bookings@chirpyoga.com

1<sup>st</sup> Wednesday  
of the month  
11am

### AGE UK

Brenda Pearce  
015242 51816

2<sup>nd</sup> Wednesday  
of the month  
7pm

### CLAPHAM with HORTON W.I.

Jill Walker  
01729 825358

Thursday  
Mornings  
9 – 10.30am

### TAI CHI

Tony Bennett  
C/o 015242 51240

Friday  
Evenings  
7.30pm

### WHIST

Elsie Morphet  
07951 295995



## YDMT news

Is there a mythical creature lurking around the Clapham area? A new, colourful Trail Tale from Yorkshire Dales Millennium Trust has been launched to find out! The mysterious Clapham Boggart is said to be about 30cm tall, extremely slimy and tends to leave a thick, green trail of gloop wherever he goes. He also has pointy ears with a little bit of fur at the tips and leathery, greeny-brown skin...

To help discover the cheeky character a fun, local story walk for children and the young at heart is now available from YDMT and the Village Store priced at £2. Using the map and guide you can find your way along the 7km circular route (or 4km one way) and spot features from the story to try and find the shy Boggart. It is the first of four 'Trail Tale' leaflets that have been developed with Anja Phoenix through YDMT and the Stories in Stone scheme, which is funded by the National Lottery Heritage Fund, thanks to National Lottery players.

Our Schools Out project brought local schools together to climb Ingleborough on 24th May while the Clapham Nature Trail panels, mentioned in the last newsletter, will be installed by the end of June. And, the dry stone wall repairs on Ingleborough and near Clapham will continue over the summer, bringing more than 3000m of walling back into good condition.

We've announced that Woodland Grants are now available and open to anyone who owns or manages land. They will help the creation of new native broadleaf woodland of any size including the costs of fencing and access.

Finally, do you want to connect and be inspired with the

heritage of the Yorkshire Dales? Then we could have the ideal course for you. They cover four areas – Arts, Botany, Archaeology and Heritage Skills – and there is something for everyone and of all ages.

17 June - Tree identification with Edward Mills - £18

22 June - Thorns: an abandoned settlement guided walk with David Johnson - £15

27 & 28 June - (2 day course) Watercolour Landscapes with Kevin Brown - £69

2 July - Air photo and LiDAR interpretation with Alison Deegan - £30

9 July - Vernacular building guided walk: Langcliffe with Alison Armstrong - £10

10 July - Hay meadow flora with Sarah Robinson - £12.50

16 July - Vernacular building guided walk: Austwick with Alison Armstrong - £10

18 July - Scything for beginners with Steve Tomlin - £40

19 July - Improvers scything with Steve Tomlin - £40

20 July - Vernacular building guided walk: Clapham with Alison Armstrong - £10

24 July - 3D Photogrammetry with Doug Mitcham - £30

2nd August - Raised bog flora with Colin Newlands - £12.50

Places are limited; to find out more and to book go to the Stories in Stone website:

[storiesinstone.org.uk/Events-Training/Upcoming](http://storiesinstone.org.uk/Events-Training/Upcoming)

You can also call YDMT on 015242 51002, email [info@ydmtd.org](mailto:info@ydmtd.org), visit [www.ydmtd.org](http://www.ydmtd.org) or pop into the office Mon-Fri 9am-5pm.

*Mike Appleton*

### The Clapham Boggart

A family story trail around Clapham, Yorkshire  
By Anja Phoenix



Easy to Follow Map & Story  
Includes: Map, Photos & Search for clues on the way

Tale

## Age UK Group

We are looking for new members for our group, which is getting a bit thin on the ground.

If you are fairly newly retired you probably don't think you're old enough yet. I thought the same until I had my arm twisted, but we are actually quite a lively bunch.

Every first Wednesday in the month we meet at 11 a.m. in the supper room at the Village Hall where we have tea/coffee and biscuits.

Usually we have a speaker and plan where to go for the trip the following week, when we have the use of the Age UK minibus. After the meeting if it's termtime we go to school for lunch. There's always a vegetarian option and at least two choices of puddings. In the holidays we go to the Reading Room where Sue makes us very welcome.

The next meeting is on Wednesday 5th June and we would be delighted to see you. If you would like to stay for lunch I need to know beforehand in order to give Lorraine the numbers, so please give me a ring on 51816. Do give us a try!

We shall look forward to seeing you.

*Brenda Pearce*

## Design our new masthead

The Newsletter Committee would like to try a new format for the Newsletter's "Masthead" to reflect our move to colour and would like to invite you to design it!

You'll need to keep to the current size (180mm x 60mm), include the "Clapham & District Newsletter" as a title, and leave space for the date and issue number, but the rest is up to you.

There's no prize – just the kudos of being in print. If you'd like to give it a try then please send your design to us by **20 July 2019**.

Send to: [claphamnewsletter@gmail.com](mailto:claphamnewsletter@gmail.com).

Good luck with your entries!

## Keasden rainfall report

	2018	2019
March	5½" or 13.97cm	15" or 38.1cm
April	4¾" or 12.06cm	3¾" or 9.525cm



# Lay of the Land

garden centre & cafe



*we stock:*  
Perennials, Alpines  
Roses, Shrubs  
Conifers, Vegetables  
Pots and Planters  
Baskets and Bedding  
Seeds, Tools  
Sprays and Composts  
Bird Care, Gifts,  
Seasonal Decorations  
National Garden Gift Vouchers  
*and more!*

The Old Joiners Shop,  
Kings Mill Lane, Settle, BD24 9BS.  
(Access off Sowerth Field ind est)  
tel: 01729 824247  
[www.layoftheland.co.uk](http://www.layoftheland.co.uk)



## TEATIME VINTAGE

*Curios, Collectables & Creations  
Vintage Heaven  
in the heart of the Yorkshire Dales*

Tracey Bilton  
Home Barn, Church Avenue  
Clapham, LA2 8EQ  
015242 51804 or 0791 719 8625  
[Teatimevintage14@gmail.com](mailto:Teatimevintage14@gmail.com)

## CLAPHAM & DISTRICT NEWSLETTER



This newsletter is a community initiative and it is funded mainly from advertising revenue and volunteers' fundraising. It relies on volunteers to get it together and distribute it. The intention is that it's both 'for you' and 'by you', so we rely on submissions from readers and the village institutions which make up our community. More committee members needed now!

The next edition will be distributed for the beginning of August.

**Copy deadline: Saturday, 20 July 2019.**

Articles should be around 300 words and, if possible, accompanied by a high resolution photograph. For further details contact Andy Scott.

The newsletter is distributed free to the communities of Clapham, Newby and Keasden. Copies are available in the Village Store and local churches. If you would like to help with distribution in your patch - get in touch. Electronic versions are displayed on the Clapham Village website, thus increasing the audience by potentially large numbers.

**Contact: Andy Email: [claphamnewsletter@gmail.com](mailto:claphamnewsletter@gmail.com)**

### Advertisements

Advertising rates start from £10.

Contact Judith Dawson for further details.

We are able to print in **colour** thanks to generous sponsors and supporters.

December 2018 edition - Glencroft

February 2019 edition - the parish council

April 2019 edition - Ingleborough Estate Nature Trail

June 2019 edition - Ward Member's Grant, Craven District Council

We would love to hear from you if you, or your business, would like to advertise or sponsor **colour** printing in a future edition.

**Contact: Judith Email: [claphamnewsletter@gmail.com](mailto:claphamnewsletter@gmail.com)**

## Settle Photographic Group

Monday 17 June 7.30pm Townhead Court, Settle

**Practical Evening - Cameras**

**Gallery:** News and Views

Thursday 20 June 10.30am Colt Park

**Visit to Colt Park, near Ribbleshead - 10.30am at Colt Park**

A chance to take photographs of hay meadows.

Monday 15 July 7.30pm Townhead Court, Settle

**Practical Evening - Syndicates**

Small group discussions on photographic issues

**Gallery:** Class

Wednesday 17 July 2pm near Helwith Bridge

**Visit to Dry Rigg Quarry**

~~~~~

**Settle Photographic Group Annual Town Trail**

Wednesday 31 July - 19 August 2019

**Settle Photographic Group Annual Exhibition**

**Clapham Village Hall**

Saturday 24<sup>th</sup> August - 26<sup>th</sup> August 2019

Full details about these events in the next edition.

**For further information see our website**

[www.settlephotos.org](http://www.settlephotos.org)



## Open Studios

**NORTH  
YORKSHIRE  
OPEN  
STUDIOS**



**DAVID COOK   ANNIE FARRER   HEATHER COOK**  
**SHOWING RECENT WORK**

**SATURDAY SUNDAY JUNE 1.2 AND 8.9. 10am - 5pm.**

**HALL GARTH BARN. CROSS HAW LANE. CLAPHAM. LA2 8DZ**

**FURTHER INFORMATION @**

**info@nyos.org.uk**

**www.nyos.org.uk**

### Other local Open Studios

#### **Newby, The Old School House**

Sarah Smith, Susan Calverley Parker, Norma Stephenson and Jill James.

#### **Malham, High Barn Cottage**

Katharine Holmes.

## Spring has sprung

We love this time of year at Growing with Grace – it's so exciting to see the greenhouses alive again with abundance and colour.

Tender young salad leaves, kales and greens, baby roots and fresh green onions are currently available, as are broad beans and our wonderful asparagus. Soon we will harvest the first peas and green beans, as well as our sweet figs, peaches and cherries.

Tomato Day is a key date, and this year it was a huge success: over 20 volunteers helped plant out hundreds of tomato plants on Saturday 11 May, and also helped with many essential greenhouse tasks.

We are grateful to our dedicated volunteers, who help us year-round. If you're interested in getting involved as a volunteer do get in touch – no prior experience of growing is needed.

This year our annual **Open Day** is on **Saturday 13 July, 11am – 4pm**. This is a chance for anyone to come along, visit the greenhouses and learn about our organic stock-free growing methods. There'll be activities for children (and adults!), live music, and a chance to sample our produce. Our new café – Elephant & Camel Café will be open all day serving drinks, vegetarian and vegan lunch, cakes and other sweet treats. You are very welcome to bring your own lunch too.

The farm shop and café are currently open 9-5 Tuesday–Saturday – pop in and see us at Clapham Nursery (on the bypass by the turning for Station Road), or get in touch on 015242 51723/ info@growingwithgrace.org.uk. You can also find us on Facebook.

*Ellie Parker*

## Street Fair – 27 July, 2019

Plans are underway for the Street Fair which celebrates its 40th anniversary this year. Since Jean Claughton organised the first event in 1979 some things have not changed. It's still the major fundraising event for Saint James' Church; there are still many other charities and community groups who rely on it to raise valuable funds for their own good causes; it's still a great place to meet people, some of whom you haven't seen since last year's Street Fair; we still spend anxious days in the build-up praying for fine weather for, at least, part of the day.

Anyway, on we go. The entertainment is booked. We have many of the things you will be expecting to see – Classic Cars, Children's Tent, Morris Dancers, Buskers, many stalls and, of course, the Duck Race. This year we will have some new entertainment in that we are welcoming a Ukulele Band – the Bryce Street Strummers which features, among others, Jean Claughton's daughter, which is a nice touch.

If you want to find out more, including how to book a space to raise money for your own charity or community group, please contact me on 51792.

*Sue Mann*

## Village hall news

We are delighted to announce that the response to our "Chair Appeal" has been very positive and, so far, we have received pledges - or even been paid! - for 25 chairs at £25 each.

This is a great project to show a lasting commitment to our Village Hall, so a massive thanks to everyone who has already donated, and we hope a few more will join in on this project.

Also a few more families have joined the Tennis Club which, at £20 per year for virtually unrestricted use must be one of the best value clubs in the country. For your £20 you get a free key so you have access whenever the court is not actually in use: great for families and friends when they come and visit.

Alternatively you can pay for individual sessions at the New Inn and borrow the racquets and balls. For these, locals pay £2 and "offcomedons" pay £5 plus a deposit for the key and equipment.

Duck Race tickets are available from me and other members of the committee so you don't have to wait until the day of the Street Fair to buy them, and you can pick your duck. Mine is yellow with a red beak.

*David Kingsley*



## HARRISON & CROSS LTD.

NICEIC APPROVED ELECTRICAL CONTRACTORS

Unit 6, Sidings Industrial Estate, Settle

### WHAT WE CAN DO FOR YOU!

#### THE ONE-STOP SHOP

Complete and partial rewires, electrical check on existing installations.  
Small appliance testing.

Visit our extensive electrical appliance showroom for chest freezers, larger fridges, washing machines, tumble dryers, dishwashers, cookers, microwaves and vacuum cleaners.

#### BRIGHTEN UP YOUR HOME

Our lighting showroom will give you all the latest ideas, we offer a free design service with installation if required.

Telephone: 01729 823423 Email: harrisonandcross@gmail.com

## SETTLE COUNTRY STORE

11 Sowarth Field Ind. Estate, Settle, BD24 9AF

Agricultural Supplies

Animal Feed

Animal Health

Equestrian

Country Clothing

Fencing & Gate supplies

01729 815070

David: 07538 289866 or Rosie: 07398 117269

Email: settlecountrystore@outlook.com



JLL Plumbing and Heating Engineers are gas safe and LPG/Natural gas registered. We are based in Ingleton and offer a wide range of plumbing and heating services



Call us: 01524 813 333

Website: [www.jllplumbing.co.uk](http://www.jllplumbing.co.uk)

Email: [enquiries@jllplumbing.co.uk](mailto:enquiries@jllplumbing.co.uk)

## KEVIN CHADWICK

On-site welding

Plant repairs

Vehicle repairs

Tyres & exhausts

Wax oil treatment

Unit 1, Dales View, Old Road, Clapham, LA2 8JH

Telephone: 07779 081388



## Healthy Pet Club

PUPPY & KITTEN PLANS



**01729 823538**

Station Road, Settle, BD24 9AA  
Main Street, High Bentham, LA2 7LE

[www.daleheadvetgroup.co.uk](http://www.daleheadvetgroup.co.uk)

Plumbing

Heating

## Howsons LTD

Specialists in:

- Fire & security installations
- Electrical installations, inspection & testing
- Plumbing & heating installations & servicing
- Renewable installations & servicing
- Wi-Fi installations
- Home automation systems
- Automated gates and access control

E: [info@howsonsltd.co.uk](mailto:info@howsonsltd.co.uk)

W: [www.howsonsltd.co.uk](http://www.howsonsltd.co.uk)

T: 015242 41422



Security

Electrical

WiFi

## Steam update

Many have, no doubt, heard of the steam locomotive 60163 Tornado: she is a regular on the Settle and Carlisle line and was the engine used for the steam-hauled regular service trains run over that route by Northern Rail (the Plandampf) in early 2017.

Some will also know that Tornado is not a repaired and refurbished original locomotive, but was instead a “new build” - meaning that she was built completely from scratch using modern manufacturing methods.

This was done because none of the other members of her class – the LNER’s “A1 Class” designed by A H Peppercorn - had survived into preservation thus leaving a big gap. However, Tornado will soon cease to be alone in this – several other “new builds” are also underway

The Darlington-based A1 Locomotive Trust is already undertaking another project. This time they are creating an LNER class P2 locomotive which will be called Prince of Wales. The original P2s were designed by Sir Nigel Gresley (of Mallard fame) and were the most powerful passenger steam engines ever built in the UK. Only six were completed, and all were later converted and then scrapped. It is hoped that the project will be completed in 2021.

Their follow up project is already taking shape and they propose to build an LNER class V4 locomotive once Prince

of Wales is completed. And - on paper at least - that will be followed by an LNER class V3. All these engines will be unique as none of the original members of those classes survived once withdrawn from service.

Over in Llangollen, work is well underway by a different



*On 13th April, LMS Jubilee class no 45690 Leander hauled the Pennine Blackpool Express steam special past Field House with the flanks of Ingleborough looming behind.  
Photo: Andy Scott*

team to build an LMS Patriot class engine, to be called the Unknown Warrior. This is at an advanced stage and may be completed during the coming year. The Patriots were workhorses of the Midland region up to the 1960’s though none of them could be rescued from the scrappers’ yards. Like the Darlington team, the Llangollen one also has a further project in the wings for when the Unknown Warrior

is completed – they hope to start on an LMS Class 4P locomotive.

Elsewhere there are a number of other new-builds underway. Some will be built from scratch but others reuse components from engines which were rescued from scrap but too far gone to be considered for restoration. In a couple of cases, near-complete engines have been converted to something other than what they originally were. For all though, the results should be that we can see or ride behind a piece of history that would otherwise have been impossible.

*Andy Scott*

## Then and now



Just over 60 years separates these two pictures of Newby. The buildings are instantly recognisable but a close look will see a number of subtle changes, though the railing round the tree in the right foreground hasn’t changed at all.



There are cars in the village today where none were before, but the biggest change in this view is perhaps in the number and size of the trees.

*Andy Scott*

## Wildlife report

### Pied flycatcher – *Ficedula hypoleuca*

The pied flycatcher is about the same size as a house sparrow. The male is a mixture of black and white with a prominent white wing bar whilst the female is a duller brown and grey but also has the wing bar.

It is a summer visitor which starts arriving in this country from mid to late-April, and then migrates south back to Africa in the early autumn. They breed in mature deciduous woodland and use holes in trees for their nesting places,

though they will also use nest boxes if they are available. As the name suggests, the pied flycatcher sits on tree branches then darts out for any insect that is flying past, before returning to another perch. Locally their main strongholds are Strid Woods at Bolton Abbey and in Barbondale. At Strid Woods nest boxes have been put up to help them with their breeding.

Here at Clapham a pair of pied flycatchers has been seen in the Trow Gill area for the last four years: there might be more pairs as there are quite a few mature deciduous trees there and on the Nature Trail. The first returning male pied flycatcher was seen at Ingleborough Hall on 21st April. A male was seen near the Show Cave on 3rd May, and a week later one was heard singing on the Nature Trail, near the folly.

The other flycatcher species to breed in this country is the spotted flycatcher. It is a pale brown in colour with slight streaking on its breast hence its name. This bird is also a summer visitor, but more common than the pied flycatcher and it arrives back in this country slightly later than the pied. Three spotted flycatchers were seen at Trow Gill on 11th May and two more were seen near Meldingscale Farm on 12th May.

The other species of bird which has a good breeding population at Trow Gill is the redstart. Two males were seen there on 3rd May and four were there on 11th May.

The first sand martins were seen over Riverbank Cottage orchard on 31st March; this was followed by a swallow seen

over Ingleborough Hall on 9th April, then house martins were seen over Clapham on 18th April and finally swifts returned to the local area on 8th May. The above four species were slow arriving back in numbers due to the cold spell we had at the end of April/beginning of May.

Chiffchaffs are normally the first warblers to arrive back. The first was heard singing at Ingleborough Hall on 24th March and their numbers increased slowly throughout March and April. One blackcap was seen at the Hall on

8th April, with two there on 9th April. The first willow warbler was heard singing on 11th April and, by the middle of May, blackcaps and willow warblers could be seen and heard singing everywhere locally.

The first cuckoo of the year flew over Ingleborough Hall on 30th April and another was heard singing near Clapdale Farm on 11th May.

Sedge warblers and grasshopper warblers seem to be increasing at Hardacre Moss and Newby Moor recently. One sedge warbler was seen at Newby Moor on 28th April, with seven there on 6th May. Two grasshopper warblers were seen and heard reeling in the same area on 28th April and 6th May, and another was seen at Hardacre moss on 6th May.

Wheatears returned to the upland areas on 29th March with numbers increasing throughout April and early May.

One red kite was observed flying over Clapham by Dave Crutchley on 21st April, and it or another was seen soaring over Park Fell, near Ribbleshead, on 11th May. A female marsh harrier flew east over Clapham Moor on 19th April.

The first dotterels of the year (1 male and 2 females) were seen on Ingleborough on 11th May.

*Tim Hutchinson  
Smithy Cottage*

*A "stocktake" of the rookery at Flying Horseshoe has shown an increase in the number of nests. In 2017/2018, there were c13 nests to be seen. In 2019 the figure has risen to 38. At least one species is doing well in the area. Andy Scott*



*A male pied flycatcher  
Photo: Tim Hutchinson*

### Before & After School Club

#### Flexible Hours

30 hrs & 15 hrs Funded Places Available

Pick up & Drop off from Local Schools

Holiday club available



Accredited Nursery



Call 01524 241903 for  
more information-

[www.kidzdaynursery.co.uk](http://www.kidzdaynursery.co.uk)