





## Welcome to your newsletter

Welcome to the June edition of your local newsletter. As always, we are grateful to all who have contributed articles and photographs, advertisers and sponsors.

As you can see from this edition some activities are beginning to re-start and we would encourage everyone to continue supporting all our local businesses.

If you want to contribute to the next edition, please do get in touch with news, views or announcements: [claphamnewsletter@gmail.com](mailto:claphamnewsletter@gmail.com)

*The Newsletter Committee*



## August 2021 edition

Deadline date: 20th July

Email: [claphamnewsletter@gmail.com](mailto:claphamnewsletter@gmail.com)

## Newsletter information

**Editions** are produced for February, April, June, August, October and December. **The next edition will be produced for August. Deadline: 20 July.**

### Articles

If you want to submit an article it should be c300 words and, if possible, accompanied by a high resolution photo. We reserve the right to edit copy.

**Contact Andy:** [claphamnewsletter@gmail.com](mailto:claphamnewsletter@gmail.com)

### Advertising and Sponsorship

Advertising rates start from £10. We are able to print in colour thanks to sponsors. We would love to hear from you if you, or your business, would like to advertise or sponsor colour printing.

**Contact Judith:** [claphamnewsletter@gmail.com](mailto:claphamnewsletter@gmail.com)

### Distribution

If the printed edition is usually delivered to your home and you haven't received one by the 5th of the publication month - please collect one from:

Clapham Village Store, the porch at St James Church Clapham, the porch at St Matthew's Church Keasden, Newby Methodist Church, and the waiting room at Clapham Station. Distribution points will have copies available on the 1st of every publication month.

*Distribution procedures may have to change during Covid, but newsletters will be available from the distribution points.*

### Website

For ongoing news updates and more see: [clapham-news.net](http://clapham-news.net)

## Clapham Village Store

... the heart of our village



Check out our new website - coming soon  
[www.claphamvillagestore.co.uk](http://www.claphamvillagestore.co.uk)

### Opening Hours

*please refer to our website for any further changes*

Mon to Fri: 8.30am – 5.30pm

Sat & Sun: 8.30am – 3.30pm

Main Street, Clapham, LA2 8DP

Tel. (015242) 51524

[info@claphamvillagestore.co.uk](mailto:info@claphamvillagestore.co.uk)

[www.claphamvillagestore.co.uk](http://www.claphamvillagestore.co.uk)

*Find us on Facebook and Twitter*



## Playpark news



First of all, we would like to thank Rosie for baking the cakes which were sold outside Park View and Christine and Martin's house a couple of weeks ago. This raised a donation of £231.50!

We would also like to thank 1st Clapham and Austwick Brownies for their good thinking. You may have seen our new recycling bin which was installed after the Brownies suggested we got one to become more eco-friendly.

We have also been given a lot of equipment from the old Primary school which has been donated to the park - so watch this space!

We are still fundraising for the zip wire - if anyone can help, please donate at: [www.gofund.me/9c3f6b83](http://www.gofund.me/9c3f6b83)

*Amy North-Johnson*

## Answers to April's puzzle

ACONITE, APRIL SHOWERS, AWAKENING, BIRDSONG, BLUEBELL, BRIMSTONE, BUNNY RABBIT, CALVES, CAR WASHING, CATKIN, CELENDINE, CHERRY BLOSSOM, CHICK, COMING INTO BUD, CROCUS, CUCKOO, CURLEW, DAFFODIL, EASTER EGG, FROGSPAWN, HOUSE MARTIN, JASMINE, LADY'S SMOCK, LAMBING, LAWNMOWER, LIGHTER EVENINGS, LONGER DAYS, MARCH HARE, MAYFLOWER, NARCISSUS, NEST BUILDING, OYSTERCATCHER, PEACOCK, PRIMROSE, PUSSY WILLOW, QUEEN BEES, REBIRTH, RENEWAL, SEEDLING, SKYLARK, SNOWDROP, SPRING-CLEANING, SWALLOW, SWIFT, TAX RETURN, TORTOISESHELL, TULIP, VERNAL EQUINOX, VIOLET, WARMER WEATHER.

Kudos goes to Brenda Pearce again for the most complete answer - even though I managed to spell "Celandine" wrong!

Here's the list of Spring-like words and phrases you should have been able to find.

ACONITE, APRIL SHOWERS, AWAKENING, BIRDSONG, BLUEBELL, BRIMSTONE, BUNNY RABBIT, CALVES, CAR WASHING, CATKIN, CELENDINE, CHERRY BLOSSOM, CHICK, COMING INTO BUD, CROCUS, CUCKOO, CURLEW, DAFFODIL, EASTER EGG, FROGSPAWN, HOUSE MARTIN, JASMINE, LADY'S SMOCK, LAMBING, LAWNMOWER, LIGHTER EVENINGS, LONGER DAYS, MARCH HARE, MAYFLOWER, NARCISSUS, NEST BUILDING, OYSTERCATCHER, PEACOCK, PRIMROSE, PUSSY WILLOW, QUEEN BEES, REBIRTH, RENEWAL, SEEDLING, SKYLARK, SNOWDROP, SPRING-CLEANING, SWALLOW, SWIFT, TAX RETURN, TORTOISESHELL, TULIP, VERNAL EQUINOX, VIOLET, WARMER WEATHER.

*Andy Scott*

## Books and bacon butties



The scent of bacon wafting from Cross Haw Lane, plus the opportunity to select your summer reading from the vast 'library' in the Hearse House, proved to be a great draw to people on Saturday, May 22nd.

However, the key attraction was the opportunity to meet one another face to face after such a long time and there was certainly a lot of catching-up going on alongside the coffee, cake and bacon butties! The demand for the latter was such that the supplies of bread and bacon ran out and John Dawson had to rescue the situation by purchasing extra supplies from the shop (twice!).

For a number of people who came along this was their first 'village event' and it was lovely to MEET them - we don't think we put anyone off!

Many thanks to all who helped on the day, especially Liz for loaning her garden and Ken and Brenda for their hard work keeping the Hearse House Library going.

However, above all thanks to everyone who came along to make it such a great 'reunion' (and contribute so generously to church funds).

*Sue Mann,  
on behalf of the PCC*

## Village quiz #2



By popular request Marshall Peach Productions agreed to host another quiz night via Zoom on Friday 9th April.

Twenty households took part tackling Stuart's wonderfully varied questions; Simon and Angela provided the technology - which worked without a hitch. Unfortunately, Quiz #1 champs were unavailable to defend their title. It was an entertaining evening and quite a close fought battle. This time the winners were David Crutchley and his Image Blenders team. A bottle of bubbly was delivered to the victors and a good time was had by all. Our thanks to all who took part.

Let's hope the next village quiz can be held 'in person' in the village hall.

*Angela Peach*



Organic Market Garden - Bakery  
Farm Shop - Home Delivery

[www.growingwithgrace.org.uk](http://www.growingwithgrace.org.uk) 015242 51723

Open 10am-5pm (closed Sundays & Mondays)

A65 Clapham - Follow the carrots!



## Settle Chimney Sweep Services



4 Craven Terrace  
Settle BD24 9DB

supplier of pots, cowls & bird nets  
Tel. 01729 823683  
Mobile. 07815 285321



Knitting Needle Craft Haberdashery Sewing Card Making Sewing Machines

## Cottontail Crafts

"a paradise for crafters"

Sue & Steve Amphlett

[www.cottontailcrafts.co.uk](http://www.cottontailcrafts.co.uk)  
[sue@cottontailcrafts.co.uk](mailto:sue@cottontailcrafts.co.uk)  
01729 822946

16 Duke Street Settle North Yorkshire BD24 9DN



## Mark Watson Home & Garden Maintenance



Digging, fencing, hedge trimming, mowing,  
paving, planting, power washing, spraying,  
strimming, turfing, gutters cleared. Loft  
insulating, pointing, rendering, painting.

No job too small, reasonable rates,  
estimates given.

07759 680938 • 07759 680943  
Low Bentham 015242 62038

## JAMES MARSHALL

Joiner & Carpenter



Established 1988

WHITEFRIARS HOUSE • SETTLE

Telephone 01729 554074

Mobile 07813 117814

Email [jmarshalljoinery@gmail.com](mailto:jmarshalljoinery@gmail.com)

## Home Barn Foods

Outside catering for all events  
and NEW meal delivery service

:: Gluten free Mondays :: Tray Bake Tuesdays ::  
:: Wagon Jobber Wednesdays ::

See Home Barn Foods Facebook page for more details

Lucy Knowles  
Fiach Cottage, Feizor, Austwick, LA2 8DF



07738 922524



Domestic & Estate Services

Telephone: 015242 51502

Email: [davidinclapham@googlemail.com](mailto:davidinclapham@googlemail.com)

Domestic (Denise): 07577 620812 Estate (David): 07974 972615

Over 25 years experience

Domestic cleaning, DIY, Grass cutting, Strimming, Knapsack spraying,  
Chainsaw / Joinery jobs and more !... just ask

## SLEEK

Hair Design By Carol Lawson

Mobile Hairstylist

Sleek Hair Design ... with over twenty years of  
local salon experience I can offer you & all the  
family the benefits of today's hairstyling in the  
comfort of your own home.

For bookings & more information

Call 078143 23578



## Focus on local sustainability



### Can we really make a difference here in our small rural parish?

This is the first of a series of articles on how local residents and businesses are turning their minds

to matters of environmental awareness and sustainability.

I am sure many of you, like me, sometimes wonder how on earth we can really make a difference. If the world is to achieve net-zero carbon emissions, there are a lot of big and hard questions that need to be asked and currently the answers often seem totally out of reach of us mere mortals.

It's a hard one isn't it? We recycle. We turn off unnecessary lights, we put on an extra sweater when it gets cold and maybe we use eco-friendly household products. Some are looking at buying an electric car or at greener alternatives for powering our homes. All this helps. ALL of it. And hats off to those who are going further.

Our first sustainability champions are the McNicholas family at The Beeches in Clapham. During lockdown they built a multi-purpose 'solar shed' in the garden. Powered by solar panel technology, it is entirely self-sufficient. Robin says, "Solar panel technology has come on leaps and bounds in recent years. You just need daylight to create power and they are getting more and more efficient each year." While "Costa del Yorkshire" doesn't always have the right kind of sunshine, we do, at least, have daylight!

While Robin concedes that it wasn't the cheapest way of getting power to the shed, he highlights the satisfaction of knowing that the energy is 100% renewable and that the whole system is portable should they move. He is happy to chat through the set-up to anyone who is interested.

In the car park, it's great to see Yorkshire Dales National Park (YDNP) have put in a couple of electric charging points. And down by the tennis court, a team from the Clapham Sustainability Group has been expertly tending their meadow, a great asset for pollinators and ecological diversity.

There will be a Sustainability Exhibition in the village hall on September 11th. If anyone would like to contribute or has any specific areas of interest, please let Jill Buckler know via email below.

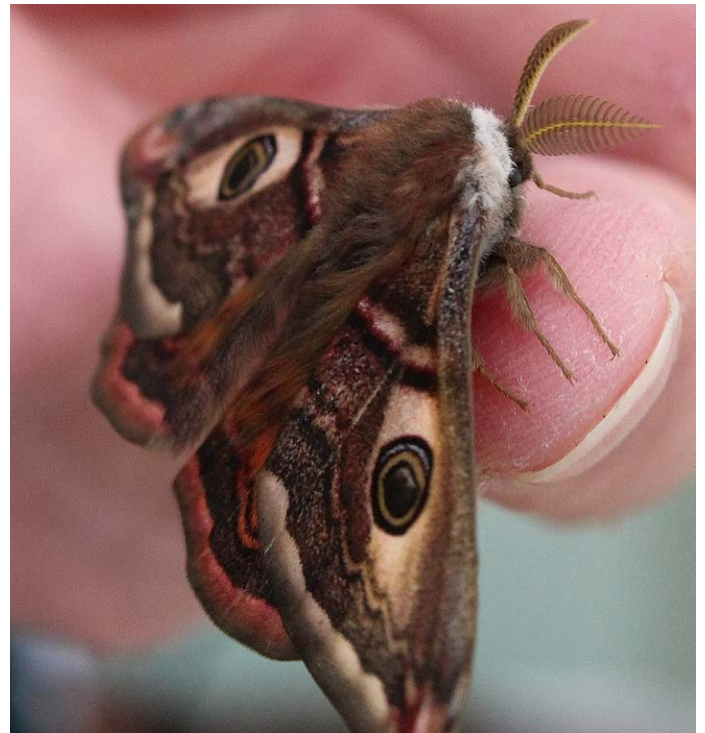
In addition, St James's Church in Clapham, in collaboration with the Sustainability Group, will be starting a library of useful resources to be shared by all. Again, any specific requests or information of interest would be welcome.

I am sure there are many out there with interesting eco-projects and it would be great to hear from you.

Next up I am talking to Edward Sexton at Glencroft about their drive and associated challenges for sustainability and visiting Colin Price on his farm to see what steps he has been taking.

Please contact [claphamsustainabilitygroup@gmail.com](mailto:claphamsustainabilitygroup@gmail.com) with interesting projects, ideas or questions.

*Maria Farrer*



*A male emperor moth, newly emerged from its pupa and one of a number raised from some of last year's caterpillars and then released.  
Photo: Angie Martin*

### Clapham Lecture Group

#### **A G M**

*7pm Tuesday 29th June*

*Clapham Village Hall*

*~~ All Welcome ~~*

*Look out for further details*

The group plans to restart lectures  
in September 2021,  
covid restrictions permitting

### Save the date!

Clapham Community Shop Ltd  
Annual General Meeting

Wednesday 14 July 2021 at 6.30pm  
at St James's church, Clapham

**All welcome!**

## SETTLE COMMUNITY LIBRARY HOME LIBRARY SERVICE



### Can't come to the library? We'll come to you.

We are still delivering during the Covid-19 outbreak.

We look forward to hearing from you.

Kath Cochrane: [kjcochrane70@gmail.com](mailto:kjcochrane70@gmail.com)  
01729 825683

Margaret Gray: [ianandmargaretgray@hotmail.com](mailto:ianandmargaretgray@hotmail.com)  
01729 822465



## Village hall news

We are pleased to open our doors once more to permitted groups following the relaxation of the government guidelines. In May, this included our Tai Chi and Yoga classes and, as restrictions are eased, we are hoping to run craft classes too.

The hall is a community asset and we look forward to seeing our more regular users, young and old, as the restrictions relax over the coming months. To help our regular groups get back to viable numbers post-covid, and to help new community groups to get established, we are halving the hall hire fees until the end of December. For any information and enquiries regarding hall bookings, please email [claphamcumnewbyvillagehall@gmail.com](mailto:claphamcumnewbyvillagehall@gmail.com)

At the last committee meeting it was decided to canvass opinions from the community as to what they would really like and expect from their Village hall.

Historically, we have had representatives from a number of different local groups, covering all ages and interests, who have had their say in how they want their hall to be run. As we follow the roadmap out of covid, we thought this was an ideal opportunity to ask what sort of activities you would like us to consider.

A working party has been set up to progress this, and in the next issue of the newsletter we will include a questionnaire to find out your opinions. We will also include more information about your hall, how it is run, and who can use it.

We are really looking forward to receiving this feedback so that we can adjust our operations accordingly. We would be grateful if you could take the trouble to respond when the questionnaire comes out.

If you would like to attend the next committee meeting to find out more, you are welcome to do so. We will be meeting on Wednesday 7th July at 7pm. This will probably be in the Village hall but we may have to resort to Zoom or have a 'blended' meeting dependent upon restrictions.

Just contact us for further details if you would like to join us.

email: [claphamcumnewbyvillagehall@gmail.com](mailto:claphamcumnewbyvillagehall@gmail.com)

*Angie Martin*



We cover all aspects of:

- Groundwork
- Fencing
- Forestry
- Mole ploughing
- Agricultural contracting
- 10-ton winch tractor

We also hire out machines such as:

- Diggers
- Rollers
- Dumpers

Contact us for a free, no obligation quote!

Michael Johnson: 07815500442

[Michael@jandnservices.co.uk](mailto:Michael@jandnservices.co.uk)

[Amy@jandnservices.co.uk](mailto:Amy@jandnservices.co.uk)

[www.jandnservices.co.uk](http://www.jandnservices.co.uk)

Like us on

Facebook at: J and N Services

Instagram: @jandn\_services



## Update on tree management work

Work on dealing with Ash Dieback disease continues. I know many, like me, will be sad to see the felling of the ash around the old Toll Bar plantation on the road out of Clapham towards Austwick. This is being undertaken on advice from experts with regards to the dangers posed by dead and dying trees.

As ever, the news is not all bad. The felling is already uncovering many other species including beech, copper beech, sycamore and oak and the whole area will be replanted in the autumn. Work is underway to replace lost roadside and field trees and the ashes that had to be felled on the edge of Clapham Beck. Re-planting will take place later in the year, at a time which most favours the survival of new trees.

*Maria Farrer*

## First chance to read the Neighbourhood Plan

The first draft of the Clapham-cum-Newby Neighbourhood Plan is now complete, and we would like you to read it and provide us with your initial comments. We need to make sure it fits with your views and is a coherent, sensible plan for the Parish. We also need to hear your opinions on the sites allocated for potential development. The Plan can only progress with the support of parishioners.

You can read it online at [www.claphamplan.net/draftplan](http://www.claphamplan.net/draftplan). Alternatively, you can email us to request a digital copy.

We recognise that some people may prefer a printed version and we are awaiting a grant to pay for these, and to set up future focus groups. We intend to have printed copies available to review at the next draft stage in early autumn.

### Why do we need a Plan?

When approved, the Neighbourhood Plan will give our community an early voice in planning decisions. With upcoming changes to the planning system, this has never been more important as it will help ensure that developments are relevant and appropriate both for their location and to help the parish flourish.

In short, our Neighbourhood Plan will provide clear direction on what the community believes is, and is not, appropriate development. This will act as a guide for the planning authorities and must be considered for any new planning applications.

### Why read it?

This is your plan, so you need to check it at every stage of its development.

In 2019 we held a series of events and carried out a household survey to find out what you wanted included in

the Plan. The draft Plan is based on these responses. This is your first chance to check the policies reflect your views and are appropriate and realistic. Given the timeframe and “new normal” forced upon us by Covid, it is also a chance to add any new ideas. You will see that some of the ideas raised by the survey do not fall within the remit of the Neighbourhood Plan. Rather than ignore these, we have developed a separate Community Action Plan to ensure these continue to be considered. This document can be found in the Plan’s Appendices.

### What do you need to do?

For now, we would like you to comment on the draft Plan. You can do so by emailing us or calling Ann Sheridan on 07866 096215. Once we have your comments, we will work on any areas of the draft that need updating.

In late summer/early autumn, we will launch an official 6-week statutory consultation period where you will be asked to comment on the second draft of the Plan. At this point we will also invite you to join a focus group to further refine the Plan and its policies. Following this consultation period, the Plan will be submitted to the local authorities for review, assessed by an independent Inspector, and will then be the subject of a community referendum. Once it has passed all of these stages it will be used to determine planning decisions.

We look forward to reading your opinions. Thank you.

*The Neighbourhood Planning team  
email: [Info@claphamplan.net](mailto:Info@claphamplan.net)*

## Ask the experts - Tuesday 22nd June 7pm-9pm



My name is Andy Fox and I am the Financial Abuse Safeguarding Officer attached to the Economic Crime Unit at North Yorkshire Police.

With fraudsters continuing to target victims with ever more sophisticated scams this is an opportunity to learn about the

tricks the scammers use and how to spot them.

North Yorkshire Police are hosting an online event in partnership with HSBC Bank which will be your opportunity to learn about the types of online banking fraud currently operating, how to spot them and how to stay safe.

HSBC Bank will be giving a presentation and then there will be a panel of experts to answer all your fraud queries. This is not restricted to online banking but may be about any fraud concerns you may have.

My primary role in the unit is to visit victims of fraud and offer safeguarding advice to reduce the likelihood of that

person becoming a repeat victim. I often see first-hand the misery that being such a victim of fraud can bring.

I have on previous occasions organised information evenings, either at Police HQ in Northallerton or at Aviva offices in York, however due to current restrictions this is not possible.

I am keen for these evenings to continue so I have organised an online event. This will be conducted over Microsoft Teams. Do not worry if you do not have Teams installed on your computer. Anyone wishing to participate will be sent an full details in an email prior to the event and you will join the meeting through your web browser.

This is the fourth of these types of events I have organised. They have been well attended and attract positive feedback.

This online event will take place on:

**Tuesday 22nd June 7pm – 9pm.**

If you wish to participate please use the following link: [bit.ly/bankingsafely](https://bit.ly/bankingsafely)

I hope you are able to make it.

*Andy Fox  
Financial Abuse Safeguarding Officer  
North Yorkshire Police*



# THE New INN

 TheNewInnClapham  
 thenewinnhotel  
 015242 51203  
 email us...  
[info@newinnclapham.co.uk](mailto:info@newinnclapham.co.uk)



  
 Open 7 days a week,  
 bar, restaurant & hotel!

## FOOD SERVICE

Monday - Saturday  
 12-3pm - 5:30pm - 9pm  
 Sunday  
 12-4pm - 5-8pm

Last bar orders at 10pm everyday  
 Please always book if you can!



Call us on 07876 205361 or email  
[andrew@septic tanksnorthwest.co.uk](mailto:andrew@septic tanksnorthwest.co.uk)

**BESPOKE SOLUTION, SERVICE & INSTALLATION FOR EVERY SITE**

**ASSURED QUALITY & RELIABILITY EVERY TIME**

**Septic tanks**

**Sewage treatment systems**

**Soak aways**

**Drainage fields**

*We are happy to help*

# i print

**YOUR LOCAL  
DESIGN & PRINTSHOP**



20 STATION ROAD • SETTLE • BD24 9AA

**TEL: 01729 823990**



[hello@iprintshop.co.uk](mailto:hello@iprintshop.co.uk)  
[www.iprintshop.co.uk](http://www.iprintshop.co.uk)





## Parish Council news

### Parish Council Meeting of 27th April 2021

The Parish Council met online on the evening of 27th April 2021 with eight members of the public in attendance.

There was no police representative present but a written report had been provided and was read to the meeting. This set out details of eighteen matters that had required police attention in the preceding month or so. These included two alleged breaches of the Covid-19 regulations, an instance of alleged anti-social behaviour and two road traffic infringements.

In relation to highways matters, the Council had been asked to consider lending its support to a proposed reduction of the speed limit in Clapham to 20 miles per hour, particularly on Riverside. After discussing the matter, the Council concluded that it was not so minded but asked for a request to be made for "Children Playing" signs to be put in place. The Council also asked for preliminary enquiries to be made as to the possibility of its funding cycling proficiency training for children in the parish.

It was noted that the recurring issue of noisy motorcycles had again been raised with the police and that potholes on Station Road and Keasden Road and a gap in the wall bordering the A65 between Clapham and Newby had been reported to the relevant authorities.

The Council received an update with regard to the Neighbourhood Planning initiative and was informed that progress has been held up because of the Covid 19 situation. This has led to an unspent grant paid to the Council in the last financial year having to be returned. An application for re-issue of the grant is to be made in the current financial year.

An update in relation to climate emergency matters was also received. The meeting was informed that there have been three meetings of the Clapham Sustainability Group since the Parish Council passed its climate emergency motion.

Various projects are envisaged: the continuation of regular litter-picking, a library of information to be held at Clapham Church and an event to be held on 11th September, 2021 which will focus on the reduction of carbon emissions.

A combination of ongoing Covid 19 restrictions, the unavailability of the Village hall for Parish Council meetings until late June and the ending of the power to hold remote meetings led the Council to modify its scheduled meetings. It decided that no Annual Parish Meeting will take place this year and the ordinary Parish Council meeting of 25th May, 2021 was cancelled.

There were only two planning matters before the Council. It was noted that an application for a single storey extension at Green Close Farm had been granted by Craven District Council.

It was also noted that an application for conversion of two barns into three dwellings and an extension of existing outbuildings to form one new dwelling at Fountain House Farm had been before the Craven District Council Planning Committee on 12th April 2021 and had been unanimously approved.

### Annual Meeting of Clapham cum Newby Parish Council 25th May 2021

The Parish Council held its Annual Meeting at Longbank Farm, Keasden on the evening of 25th May 2021. There were two members of the public present.

The Council unanimously re-elected both Councillor Colin Price as Chairman and Councillor John Dawson as Vice-Chairman.

Further matters dealt with were the re-appointment of Yorkshire Internal Audit Services as internal auditors for the current financial year and the appointment of Councillors as representatives to outside bodies.

The latter were as follows:

- Councillor Elphinstone - United Charities/Aid in Sickness Fund and the Clapham Association;
- Councillor Kay - Clapham Village hall committee;
- Councillor Price - The Forest of Bowland Area of Outstanding Natural Beauty Joint Advisory Committee; and
- Councillor Sheridan - Yorkshire Local Councils Associations.

---

For more information on the work of the parish council please click on the parish council information link at [www.claphamyorkshire.co.uk](http://www.claphamyorkshire.co.uk)

Parish Council meetings will generally be on the fourth Tuesday of each month. The remaining meetings in 2021 will take place on the following dates at 7:30pm and should be held in the village hall.

Tuesday 22nd June  
Tuesday 27th July  
Tuesday 28th September

Tuesday 26th October  
Tuesday 7th December

The Parish Clerk & Responsible Financial Officer Nigel Harrison can be contacted by email: [njhar1957@gmail.com](mailto:njhar1957@gmail.com) or telephone 015242 51165



# Lay of the Land

garden centre & cafe



*we stock:*

Perennials, Alpines  
Roses, Shrubs  
Conifers, Vegetables  
Pots and Planters  
Baskets and Bedding  
Seeds, Tools  
Sprays and Composts  
Bird Care, Gifts,  
Seasonal Decorations  
National Garden Gift Vouchers  
*and more!*

The Old Joiners Shop,  
Kings Mill Lane, Settle, BD24 9BS.  
(Access off Sowerth Field Ind est)  
tel: 01729 824247  
[www.layoftheland.co.uk](http://www.layoftheland.co.uk)



## SETTLE ANTIQUES CENTRE

*Antiques, vintage and collectables  
Over two floors  
in the heart of the Yorkshire Dales*

Tracey Bilton  
Market Place  
Settle  
BD24 9ED  
01729 823494  
0753 430 2135

[Teatimevintage14@gmail.com](mailto:Teatimevintage14@gmail.com)



Ground works & Landscaping services

Commercial or Domestic

Driveways, Footings, Gardens

Drainage, Tracks & Paths

Salt spreading & Snow ploughing services

Kindling & logs produced, sold & delivered

Contact: [Bradtooke@googlemail.com](mailto:Bradtooke@googlemail.com)

0792 010 6341 or find us on Facebook

Professional, & Reliable

Honest Work Guaranteed



# McConnell

HOMES LIMITED

**Dalesview Close  
Clapham • LA2 8JH**

[www.dacres.co.uk](http://www.dacres.co.uk)

Traditionally built new homes now available  
in the beautiful conservation village of Clapham.






Dacre, Son & Hartley  
New Homes



Photo: Andrew Fletcher



## Church news

### John's notes: That's what friends are for



At St James's Church we are thankful for our friends. There are many here and you, reader, may well be one of them. Those who tend the churchyard,

clean the building, create floral and other sorts of wonderful displays throughout the year and especially on festive or commemorative occasions we all share.

Many, of course, have been involved in the annual Street Fair which is a 'Clapham thing' organised by the Church and our main fundraising event of the year. Although, as a result of Covid, the church will not be running the Street Fair again this year, we have decided to organise a small event focused on the church and churchyard itself on Saturday, July 24th. We'll have a couple of stalls - books, jam, cakes plus teas, coffees and the 'famous' bacon butties. There will also be an exhibition in church featuring the 'Lockdown Thoughts' of people from the North Craven area, and it will be an opportunity to meet with friends you may not have seen for some time.

We will also use this opportunity to tell people about a new organisation called The Friends of St James's Church. We know that the church is special to many people: for some it was where you got married, or had children baptised; for others it's where the village gathers for special occasions both solemn and happy; for some it's somewhere quiet to sit and think, perhaps remember; and for others it's a source of friendship. Many who don't attend or share the Christian faith nevertheless may think it an important part of village life.

You may know that the church depends almost entirely on voluntary giving to maintain a substantial historic building, and - after the year that every voluntary organisation has had - you'll appreciate that is an increasing struggle.

So the idea of The Friends of St James is very simple. It's a way in which the wider community, our friends, can contribute financially towards maintaining and developing the church building. We'll be launching it during the Open Day on Saturday, July 24th, sharing more details then and inviting anyone interested, Clapham residents past and present, and anyone with a desire to wear your friendship on your sleeve, to become part of the ongoing life and development of the church in our community. I hope to see you there; and would be very happy to talk it over with anyone who'd like to know more in the meantime.

*Revd John Davies*

*The Vicarage, Clapham Road, Austwick, Lancaster,  
LA2 8BE*

*01524 805928; john.davies@leeds.anglican.org  
Notes from a small vicar: bit.ly/johndavies-talks*

### Church Services in June

All our churches are now open every day for individual prayer.

#### Sunday 6 June

9.30 Eldroth

Shorter Holy Communion

11.00 Clapham

Shorter Holy Communion

#### Sunday 13 June

9.30 Austwick

Shorter Holy Communion

11.00 Keasden

Shorter Holy Communion

#### Sunday 20 June

11.00 Clapham

Shorter Holy Communion

6.30 Eldroth

Evening Prayer

#### Sunday 27 June

9.30 Austwick

Shorter Holy Communion

7.00 Keasden

Lambing Service - see below

For up to date details of our services and events from July onwards, please see church noticeboards or our weekly newsletter which is available online at: [bit.ly/churches-newsletter](http://bit.ly/churches-newsletter).

#### Celebrate Lambing at Keasden Sunday 27 June, 7.00pm

A little later in the year than usual, but, all being well, Keasden Church invites you to our annual Lambing Service. A time to come together with friends and neighbours to celebrate this year's lambing and the life of our farming community. An added feature this year is that we will begin the service at the New Burial Ground which is being created by the church for the community, on land adjacent to St Matthew's Church. Come and see the excellent work which has been done so far on walling and preparatory pathwork, and take in the wonderful views from this new site. There will be refreshments. All welcome.

#### Support Gavi

Our appeal continues in support of Gavi (the global international vaccine alliance) in their aim of guaranteeing fair and equitable access to the Covid-19 vaccine for every country in the world, in particular low- and middle-income countries. Donations please to: [bit.ly/clapham-gavi](http://bit.ly/clapham-gavi) or cash donations in envelopes marked **Gavi Appeal** to Austwick Vicarage. Thank you!

---

#### Methodist Church, The Green, Newby

Services are planned to restart by the end of June. Please see the church noticeboard for further details.

The Revd Stephen Caddy can be contacted by phone: 015242 61257 or by email: [Stephen.f.caddy@gmail.com](mailto:Stephen.f.caddy@gmail.com)

---

#### Bethel Chapel, Cross Haw Lane, Clapham

Sunday services are taking place at our chapel at 11am and 6.30pm.

We are still supporting the Foodbank. We plan to hold Sportsreach (children's football and netball) from 4th to 8th August, if guidelines allow.

For further updates, please visit us on Facebook or our Bethel Chapel website: [www.bethelchapelclapham.org](http://www.bethelchapelclapham.org)

## A life well lived

In the words of her cousin's Australian god daughter, Elga was "such an angel, so kind and gentle". And so she was. She helped others in every way she could for as long as she could. She was also quite a private lady who did not talk about herself a great deal.

Yet we now know that she had a difficult start in life, with some hard knocks. When her friends had to clear 'Greenbank', the house in which Elga lived for 46 years, they found letters and papers which enabled them to put together what they believe to be an account of her life.

Elga was born in Leamington Spa in June 1932, a long 9 years after her parents married. Tragically her father had died 10 weeks before she was born, their first and only child. Mother and child soon moved to the Heysham area where Elga's grandmother lived. There Elga thrived, gaining a Junior Scholarship to Lancaster Girls' Grammar School in June 1943. Tragedy struck a second time when her mother died just two months later, leaving her an orphan. Fortunately her grandmother took on the role of carer and guardian to Elga who then moved to live with her grandmother and continue her schooling in Lancaster. In 1948 she gained her School Certificate. Sadly her grandmother died a few months later, in January 1949 when Elga was only 16 years old.

This left her homeless and alone in the world – apart from a cousin Pat in Bingley.

It is not known how or why or even when but Elga then seems to have left school and moved to Low Bentham to live at The Ridding with a Mrs. Cooper Hilliard who was a physiotherapist and a committed vegetarian. Here Elga earned her keep by looking after a large greenhouse, doing any decorating that needed doing and, in Elga's words, "any job going". She told of the enormous amounts of paint and emulsion which she applied over the years to the walls and high ceilings of the house, described in the architectural literature as being built "in the Scottish baronial style". Elga presumably received bed and board free of charge in return though she was discouraged from developing a social life or forming close relationships with young men. In 1957 Elga became a bridesmaid and companions at The Ridding suggested that she would be the next blushing bride, to which the quick response was that she was far too useful to the household for that. Nevertheless she found time to become a Sunday school teacher in Bentham where her pupils took

part in amateur dramatic performances.

She began to learn from Mrs. Cooper Hilliard the techniques and skills of physiotherapy and she seems to have been allowed to keep for herself any earnings gained from her growing practise. But in 1968 or 69 when Elga had lived there for 20 years Mrs. Cooper Hilliard unexpectedly sold The Ridding with vacant possession. This meant that Elga had just 24 hours in which to find a new home. Fortunately

Mrs Cooper Hilliard gave her physiotherapy practice to Elga and this became Elga's profession for the rest of her working life.

When she suddenly became homeless Elga, now 36 years old, turned to her cousin Pat and went to live with her in Bingley. Here Elga claimed unemployment benefit for a while before deciding to return to the Bentham area where her skills were known. She tried to buy a house in Bentham but was substantially out-bid. Instead, she again looked for help, this time to Dr. and Mrs. Farrer, whom she had perhaps encountered through her practice as a physiotherapist and had learned that they had a number of houses to rent in Clapham.

She rang and spoke to Joan Farrer, asking whether they had a house in which she could set up as a physiotherapist. Joan told her that a suitable house had become available "that morning". On 8 July 1973 Elga was offered the tenancy of Greenbank. She

accepted, moved in, and created a treatment room from which to run her practice. The house, said Elga, had everything she needed.

The practice seems to have been very successful. Elga had several grateful clients or patients living in Clapham, many from local farms and others from as far afield as Scotland. Many patients were surprised by her modest charges and suggested that she increase them. Several brought other members of the family when they came for treatment, becoming firm and grateful friends who sent cards every Christmas, wrote many letters of appreciation and implored her not to retire when that time came. She was heavily involved in the establishment of a local branch of the Arthritis and Rheumatism Council. She also formed a close relationship with the Farrers with whom she holidayed from time to time. At one point she enjoyed a holiday in Kenya.

One aspect of her life did not go quite so well. In 1980 Elga was involved in a three vehicle accident near Swinden Quarry while a passenger. Elga sustained broken ribs and a head injury.





## A life well lived

She experienced another accident in 2010 while driving near Crooklands, this time involving a lorry and a third vehicle. Witnesses confirmed that she was not at fault.

Elga was a kind and gentle soul, she was also a lady and a diplomat. The tale is told of a farmer who had back trouble; his wife insisted that he put on clean underwear before visiting Elga for treatment. She was too much of a lady to tell him as he lay on her couch that he had put his underpants on back to front.

In her free time Elga was an active member of Settle Creative Writers Group tutored by Peggy Hewitt. Some of her writing was published in 1992 and more some years later. For many years she checked the proofs of the Clapham Newsletter. She also loved her garden, growing flowers, salad items and soft fruit as well as running the plant stall at Clapham's annual Street Market for many years. She enjoyed ballet and classical music

In 2009 Elga's cousin Pat died intestate after a long episode of schizophrenia during which she completely rejected Elga. Because Pat was believed to have no surviving relatives her estate was handled by Social Services. It was only the chance finding of a card from Elga to Pat that led to the discovery that she was in fact Pat's only surviving relative. She later inherited virtually the whole of Pat's considerable estate.

Elga retired at last in 2011 at the age of 79, in spite of protestations from many clients. She converted her treatment room back into a comfortable sitting room and began to enjoy a busy life in retirement. She continued as secretary/treasurer of the Clapham branch of the WEA (later to become the Lecture Group) of which she was a

member for 42 years). She was a member of the Parish Church Council and an authorised eucharistic assistant, was an active member of the local history group and of a local book group, as well as helping to run the Clapham Age UK group and tending her large garden with help from Kirsty and John. For several years she devoted many hours day and night to supporting her friend Valerie who lived nearby and became increasingly dependent. Elga contracted shingles from Valerie and was seriously ill for some time.

When the Games Club started Elga became a regular member. From 2015 she supported the newly re-opened Clapham Village Store, both financially and practically; she laundered the shop's aprons, tea towels etc. and tended the basket of flowers outside the shop as well as flowers in the churchyard.

On 26 February 2019 Elga was taken to Lancaster R.I. following a fall and stroke in her bathroom at Greenbank. This was followed by 4 more strokes and falls over the next 18 months. She moved back and forth from hospital to Abbeyfield, to Airedale, to Bradford R.I. as successive strokes took their toll and her condition became more precarious. For a short while she was supported by Ribble Care.

Finally she was admitted to Anley Hall in Settle where she died peacefully in her sleep at 8.30 am on 23 April 2021. It had been a long life well lived.

*Ken Pearce*

*Elga was also a long-serving member of this Newsletter's publication team and the whole committee would like to record their special appreciation of the work she did for the group. She will be truly missed.*

---

## Then and now



Our pictures feature the former outhouses and cottages at the rear of the Flying Horseshoe. At one time, these buildings were used by the Bradford Pothole Club as a club hut and tackle store - The Dump as it was known. Our 'then' picture shows the scene at around this time of year in 1954, with a tractor load of equipment brought back down off the fell from a Gaping Gill Winch Meet. These meets had started a few years earlier when the Craven Pothole Club reported that they no longer had the manpower to run their own winch and the Bradford Club stepped up to fill the gap.



Unable to secure a long-term lease from The Shoe's owner, Hammonds Brewery, the BPC had moved out in the early '60s when Brackenbottom, near Horton-in-Ribblesdale, became their new Dump. The pub itself is no more of course, converted into flats, and the outhouses and cottages have likewise been converted and modernised to provide residential accommodation as our "now" picture shows in the same scene today.

*Andy Scott*

**WITH OVER 30 YEARS EXPERIENCE**

- ♦ Domestic & Commercial Flooring
- ♦ Amtico and Karndean Design Showroom
  - ♦ Made to Measure Blinds
- ♦ Settle's largest Bed and Mattresses Display
  - ♦ Rugs
- ♦ Bespoke Furniture, Harris Tweed/Abraham Moon
  - ♦ Solid Oak & Pine Furniture
  - ♦ Gifts for the Home
- ♦ We offer a free measuring service

**Amtico**  
*One* Exclusive  
Retail Partner

**Karndean**  
Designflooring

UNIT 2, SOWARTH FIELD INDUSTRIAL ESTATE, SETTLE, BD24 9AF

**01729 825122**

7 DUKE STREET, SETTLE, BD24 9DU

[info@peterallenflooring.co.uk](mailto:info@peterallenflooring.co.uk) [www.peterallenflooring.co.uk](http://www.peterallenflooring.co.uk)



*Peter Allen*  
**FLOOR COVERINGS LTD**



**Kidz** Forest Schools  
**DAY NURSERY**  
& PRE-SCHOOL

**Ofsted**  
Good  
Provider



**Funded  
Places  
available  
15 & 30  
Hours**



**Day Nursery & Pre-School, Ingleton**

- Open 7am – 6.30pm Mon – Fri
- All Staff Paediatric First Aid trained
- Places for children age 3 months – 8 years
- French, music and dance sessions
- Before and After school Clubs



**Call: 01524 241903 for more information** [info@kidzdaynursery.co.uk](mailto:info@kidzdaynursery.co.uk)  
[www.kidzdaynursery.co.uk](http://www.kidzdaynursery.co.uk)



## Eric Mason

Eric was born at Smithy Cottage on Christmas day 1931. Sadly, his father, a blacksmith, had been killed in a motor bike accident four months prior to his birth, which left his mother to bring up Eric, and his two brothers, by herself. Times were hard but she received help and support from neighbours to make things a little easier. Eric never forgot the kindnesses he received then and throughout his life. He and his brothers John and George had a carefree life around the village, but sometimes looking after "our Mas" - as he was known then - was a bit of a bind as they were five and ten years older than he. On one occasion, when on "pram duty" walking up the grounds, they decided to let go of the pram. Eric hurtled down the banking but lived to tell the tale.

Eric attended Clapham Primary school from the age of 3, having been given special dispensation because of his mother's need to work to support the family. There were no state benefits in those days! He then went on to attend Ingleton school where he much enjoyed woodwork. On leaving school at fourteen he would have liked to do joinery on the estate but George was already there meaning there was no vacancy. So, instead, he started work at the local garage in Clapham. However, he wanted to learn more than just pumping up tyres and so applied to become an apprentice motor engineer with Ribblesdale Motors in Settle. In this he was successful and he went on to work for them for fifty years.

Apart from his two years national service, Eric lived in Clapham all his life and became a fount of knowledge in the village for future generations. He could remember all the number plates of land rovers and which farmer owned them. When on holidays he would spot a land rover far from home and tell me its ownership history. Eric, like all the Mason family, was keen on sport and played billiards, cricket, tennis, badminton and road-trial motor-bikes. In 1969 I arrived as a teacher at Ingleborough Hall and joined the Badminton club. The rest is history.

We married on April 1st 1972. Eric was a true gentleman and quietly supported me in all my work and activities. Clare was born in 1975 and Eric became the most caring and supportive dad anybody could have. He arrived home with a two wheeler bike when she was 6 weeks old as it was

too good a bike to miss! Just the night before his stroke, I asked him how he had learnt to be such good father when not having one himself but he said that he had had caring uncles.

As a family we enjoyed holidays together and, with Clare's friend, visited families of exchange students in France, Bulgaria and in Austria where he became known as "the English dad". Prior to meeting me, going to the TT races on the Isle of Man was a "must" and his interest on that front never waned. He was also very proud of his eldest brother's service on Lancaster bombers and I was taken many times to Lincoln to see the airfields.

He was a caring grandpa to Aimee and Erin and enjoyed their company when they came for their holidays. Admittedly, latterly, they would be getting up just as he was going back to bed for his sleep! He was a loving uncle to Joan and Kathleen and their children, and an uncle figure to many friends.

Eric had been an organ blower, a church "locker up",

a member of the PCC and, for many years, manual winder of the church clock - that kept him fit. He enjoyed walking around the village and chatting to people. His deafness was a real hindrance to him in later life and at times he became very frustrated as he could not properly follow the conversation. He was always interested in others and asked after them and their families. He warmly welcomed people into the village and had seen many changes in his lifetime. His passing is the end of an era. He appreciated the many kindnesses he received - he was spoilt rotten - but deserved it.

Clare and I would like to thank people for all their kindness and appreciative words about Eric. We all miss him so much but have very happy memories.

*Liz Mason*



## Keasden rainfall report

	2020	2021
March	5¾" or 14.6cm	10¼" or 26.03cm
April	1" or 2.4cm	Nil

# B&W Funerals Ltd

James G Macdonald

Private Chapel of Rest

24 Hour Service



Ingleton, Burton, Bentham, Austwick, Clapham,  
Settle, Wray, Hornby, Caton, Kirkby Lonsdale  
& all the surrounding areas

*We offer our own Funeral Plans on request*

6 Chapel Lane, Ingleton, Carnforth LA6 3FX  
jmfunerals@gmail.com

Tel: Office 015242 41293  
Home: 015242 61370 Mobile: 07758 002260

# SMART SIGNAL

Aerial & Satellite Installation & Repair

Wi-Fi & Home Network

CCTV Installation



Ben Fawcett

M: 07950 028 622 • T: 015242 62017

E: smartsignal@outlook.com

W: www.smartsignal.co.uk

Plumbing Heating Renewables

## Howsons LTD

Specialists in:

- Fire & security systems installation & servicing
- Electrical installations, inspection & testing
- Plumbing & heating installations
- Boiler servicing and repairs
- Renewable installations & servicing
- Wi-Fi installations
- Home automation systems
- Automated gates and access control

E: info@howsonsltd.co.uk

W: www.howsonsltd.co.uk

T: 015242 41422



Security

Electrical

WiFi



## We provide a range of Local Services & Activities

Complying with the Government Covid-19 regulations  
we are offering :

- A confidential Information & Advice Service
- Digital help with Mobiles, I-pads & Laptops
- A Telephone Befriending Service
- Independence Support
- Signposting to Hubs & Local services
- A Volunteer Transport Scheme for Hospital and Doctor appointments
- Two shops, our Age UK General Shop and Second Time Around, our Furniture shop.
- We can help and advise on many things and are only a call away ...

### Opening times are :

Mon - Sat 10am - 4pm and Sun 12noon - 4pm

Office times Monday - Friday 9am - 1pm

Office Hours Mon-Fri 9am - 1pm

(A message can be left at other times)

Age UK North Craven

Cheapside

Settle

E: info@ageuknorthcraven.org

T: 01729 823066

Web: ageuk.org.uk/northcraven

Second Time Around

8 High Street

Settle

E: info2@ageuknorthcraven.org

T: 01729 824009



## News from the farm

By the month of June we are well into the rainy season and grass, along with nettles, thistles and weeds of all kinds are growing in a rampant manner all over the farm. I am often reminded of my Grandad who pointed out to those who complained about the weather that “it is rain that keeps old England a green and pleasant land.”

Grandad was not very good with machinery; he didn't trust it and considered it too clever for its own good. One day, years ago, he was baling hay while his two sons made a start on moving the bales to the barn because rain was threatening. The baler went out of sight in a certain part of the field and the two lads went to investigate when it didn't come back into view as expected. Obviously they expected a breakdown which was as common in those days as it is now. (Don't even consider buying a baler.) Anyway, the baler was stationary and they found Grandad had sneaked off to the house to check the cricket score on the wireless as he thought the lads were stacking bales in the barn and they would never know. He was removed from baling duties and put to work with a fork, which probably suited him better.

Our meadow grass is coming along nicely and is already providing cover for ground nesting birds such as curlews. We like to watch for them landing in the long grass and then pop a small peg in the ground near to the nest. Then, if the eggs are not hatched by the time it comes to cut the grass, we can easily go around and leave them undisturbed. None of this seems to bother the prospective parents who, as you would expect, sit tight and do their duty.

Nowadays many of the really big and more professionally managed dairy herds are housed all year round. This is partly because more cows can be kept and partly because management can be very closely monitored as margins are squeezed ever tighter. These herds are really well looked after: the modern dairy cow wants for nothing and is free to fulfil her huge potential. Luckily we are very much amateurs and our cows go out to graze each summer. My own view is, if the cows don't go out in summer then what is there left in life for the peasant farmer to look forward to? One of my favourite jobs is bringing cows in for milking. Our cows have a fifteen minute walk on the road to get home in an afternoon and occasionally we delay, for a few moments, a cyclist or walker. Conversation often follows and I see it as my duty to inform the general public about the finer things in life such as the dairy cow or the importance of chocolate in a healthy diet.

One particular lady was very interested in the reproductive cycle of our cows. She was fascinated that I artificially inseminated our cows, saw many of them born and was responsible for their wellbeing practically their whole life. I suspected she thought I was a cold and heartless farmer, forcing them to breed against their will.

So I explained that each cow could only be mated when in season and would have one calf per year, just as she would were she not domesticated. Also that her standard of living was far higher than mine: for instance, our cow feet get a level of care mine can only dream of. I pointed out that I had held more cervixes and tickled more fancies than I cared to remember and was probably responsible for more babies being born than Boris Johnson and Rupert Murdoch put together. It turned out she had no children as “she didn't have the time”. I told her that in my experience it didn't actually take that long, but I don't think she understood.



*Billy Shorthorn out with the ladies  
Photo: John Dawson*

We calve cows in every month of the year but most of them calve between July and October. So, when the cows go out for summer, we “dry off” those due to have babies between the end of June and the end of August, which is about one third of our cows. It is their holiday: they may sit under a tree or stretch out in the grass. Effectively they are sat by the pool, sweating and sipping cool drinks in some foreign clime but without the air miles.

Agriculture has fared better than some industries during the pandemic with much of the work going on as normal. Even auction marts have managed to stay open, albeit with very strict protocols including not leaving your vehicle when on their premises. The social aspect of the agricultural world should not be underestimated. Not having the mart café open as a place to share farming disasters has been felt by many, particularly those who spend much time working alone, although it has saved me a fortune.

Agricultural shows are as close to attending a rave as the average peasant is likely to get and, with this in mind, it was a really difficult decision to cancel Bentham show which was to have been held in September. Discussion went back and forth, round and round and up and down but having looked at all the regulations required to go ahead, we unanimously decided it would be too much to ask of a small band of willing helpers.

I hope the café is open soon ...

*John Dawson*

## HARRISON & CROSS LTD.

NICEIC APPROVED ELECTRICAL CONTRACTORS

Unit 6, Sidings Industrial Estate, Settle

### WHAT WE CAN DO FOR YOU!

#### THE ONE-STOP SHOP

Complete and partial rewires, electrical check on existing installations.

Small appliance testing.

Visit our extensive electrical appliance showroom for chest freezers, larger fridges, washing machines, tumble dryers, dishwashers, cookers, microwaves and vacuum cleaners.

#### BRIGHTEN UP YOUR HOME

Our lighting showroom will give you all the latest ideas, we offer a free design service with installation if required.

Telephone: 01729 823423 Email: harrisonandcross@gmail.com

## SETTLE COUNTRY STORE

11 Sowarth Field Ind. Estate, Settle, BD24 9AF

Agricultural Supplies

Animal Feed

Animal Health

Equestrian

Country Clothing

Fencing & Gate supplies

01729 815070

David: 07538 289866 or Rosie: 07398 117269

Email: settlecountrystore@outlook.com

## KEVIN CHADWICK

### Welding and Garage Services

All makes of vehicles serviced and repaired

Tyres and exhausts

Clutches and cambelts

4 Wheel alignment

Chassis welding and repairs

Small body-work repairs

Pre MOT checks

Waxoil underbody protection

Recovery service

Unit 1, Dalesview, Old Road, Clapham, LA2 8JH

For enquiries ring Kevin

015242 51639 or 07779 081388



## Healthy Pet Club

PUPPY & KITTEN PLANS



**01729 823538**

Station Road, Settle, BD24 9AA  
Main Street, High Bentham, LA2 7LE

[www.daleheadvetgroup.co.uk](http://www.daleheadvetgroup.co.uk)

## LAKE HOUSE

FOOD & DRINK

REAL ALES & CIDERS CRAFT BEERS

WINES & SPIRITS

SPECIALITY PIZZA SNACKS

HOT & COLD DRINKS

Thursday 3 - 6

Friday 12 - 7

Saturday 12 - 7

Sunday 12 - 6

The Old Manor House, Church Avenue, Clapham LA2 8EQ

Telephone 01524 805665



## Wordsearch

This issue, the task is to find the 40 Yorkshire rivers hidden in the square. Each is one that either rises or forms from the merger of other watercourses in the county, reaches the North Sea somewhere along the Yorkshire Coast, or forms part of the county's boundary. As usual, they can be found vertically, horizontally or on the diagonal, and either forwards or backwards. Each has a minimum of 4 letters so, sadly, there's no place for the Doe, Esk or Ure. Good hunting but no prizes!

*Andy Scott*

E	P	D	J	F	R	I	C	C	A	L	L	F	X	R	T	J	K
N	D	S	V	Y	A	E	X	N	Q	A	A	O	Y	U	L	E	R
L	I	E	B	R	A	E	D	P	E	V	S	B	T	E	L	O	O
O	Y	M	R	I	L	F	H	L	X	E	U	T	V	B	R	L	T
C	Q	X	R	W	Z	K	D	S	A	R	R	E	B	E	J	L	H
A	T	E	R	G	E	B	Y	D	N	C	N	I	V	F	E	E	E
Y	E	L	X	O	L	N	D	L	I	G	R	O	O	R	G	K	R
S	S	I	W	T	T	A	T	R	E	N	C	S	A	W	N	S	W
S	W	T	T	L	E	G	E	B	O	I	S	F	O	M	I	E	I
P	Y	A	L	T	E	J	M	E	C	F	R	R	K	D	N	H	S
H	N	U	L	R	S	L	L	U	U	I	T	W	Q	O	N	N	K
S	H	R	X	E	I	V	O	R	K	H	F	R	I	V	E	U	E
E	W	O	U	M	R	V	H	S	W	E	N	T	E	E	W	F	Z
S	H	U	M	B	E	R	E	N	E	V	E	S	X	H	R	W	K
U	T	T	O	F	H	H	J	L	L	V	K	D	E	A	R	N	E
O	N	I	A	B	M	S	Y	X	I	E	K	R	H	L	G	N	G
I	J	A	W	P	R	A	A	C	T	N	Q	W	V	W	Q	W	G
Z	Q	J	G	R	N	O	D	W	W	H	Q	O	H	S	P	E	N

## Neighbourhood Alert - scams to watch out for

### Bogus police officer calls scam

This scam keeps re-emerging in different forms and with different 'police officer' names but continues to frighten its victims into parting with their cash. The caller claims to be a police officer and says that they are aware that your bank details or bank card have been stolen. The caller states your money will be safe if you either transfer it to a safe account (details given by the caller) or if you attend the bank and withdraw your money from your account to be collected and taken to a safe place by the police. **If you receive a call like this then hang up immediately.**

The police or your bank will never call and tell you to pay or transfer money. Check how to verify a police officer from our website: [bit.ly/NYPfraud](http://bit.ly/NYPfraud)

### National Insurance Number scam

There have been reports recently about scam calls concerning National Insurance numbers. These calls appear to come from either landline or mobile phone numbers and the callers claim to be from the police or National Crime Agency. They are usually recorded messages telling the receiver there has been a problem with their National Insurance number: either it has been stolen or compromised and there is a fee to pay in order to receive a new number.

Some victims have been told they will be arrested if they don't follow the instructions whilst others have been told to press a number on their keypad. **If you receive a call like this, hang up immediately and report it to the police.**

### Royal Mail/courier delivery notification scam

You receive an email or a text message claiming to be from Royal Mail or DPD advising that a parcel is waiting to be delivered but requires a small fee to release it. This is followed by a link to a fake website into which you are asked to enter your payment card details.

In the following days the scammers contact you claiming to work for your bank. They will try to convince you that there has been some suspicious activity on your account and that you need to move your money to protect your assets. You will then be given a sort code and account number to make the transfer and it will look as if a new account has been set up in your name, but it is actually under the criminal's control. **If you receive an email like this, you can forward it to: [phishing@ncsc.gov.uk](mailto:phishing@ncsc.gov.uk) or if it is a text then send it to 7726 and then delete it. Do not click on any links.**

*Neighbourhood Alerts Team,  
North Yorkshire Police*



E.Bike, Mountain, Hybrid, Road, Gravel,  
Folding, BMX Bikes

Spares / Accessories / Clothing / Gifts  
Fully equipt & qualified workshop facilities

Hire bikes

Cyclescheme.co.uk / Bike2Work

0% Finance upto 36 Months on selected purchases

Kirksteds, Westhouse, Ingelton, LA6 3NU  
T:015242 41226 E:sales@escapebikeshop.com  
Tue-Sat 8.30am-5.30pm



- **Tearoom**  
serving lovely homemade food
- **Garden Centre**
- **Reclamation Centre**
- **Luxury Craft Courses**

Wigglesworth, BD23 4SN

01729 840848

[www.BeAGardenMaker.co.uk](http://www.BeAGardenMaker.co.uk)

Find us on the Settle to Sawley Road

The Original

 **LOGSDIRECT**

We offer local, independent advice

Try our NEW products

- Burner Firestarter Firelighters • Hotblocks
- Coffee Logs • Evening Lighters

- Mushroom Compost • Top Soil
- Bark • Kiln Dried Logs
- Firelighters • Smokeless Fuel • Pellets
- House Coal • Kindling • Firelighters
- Wood Pellets • Briquettes

Free local delivery (min order required)

Visit us at: Logs Direct Ltd, Brooklands Farm,  
Addington Road, Lancaster LA2 6PG

Tel: 01524 812476 Email: [enquiries@logsdirect.co.uk](mailto:enquiries@logsdirect.co.uk)

[www.logsdirect.co.uk](http://www.logsdirect.co.uk)



Ruthie Woodhouse

Floral Designer

&

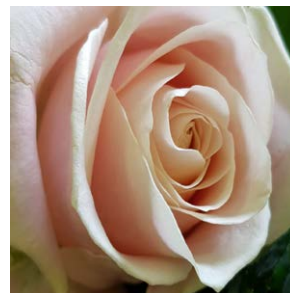
Bridal Flower Specialist

For a personal, professional  
and bespoke service for  
all your floristry needs...  
please give me a call.

Mobile: 07814 838369

Home: 015242 51157

Email: [ruthiewoodhouse@outlook.com](mailto:ruthiewoodhouse@outlook.com)



**clapham-news.net**

for up to the minute news and articles,  
plus more from our advertisers and sponsors



## Steam update



Mock steam engine near Levisham on the North Yorkshire Moors Railway.  
Picture: Angie Childs



Flying Scotsman completes the reverse curves as it passes Lawkland.  
Picture: Andy Scott

Steam has reappeared at the station after a very frugal period for “spotters”. Over the last couple of weeks we have seen a number of movements: on Tuesday 11th May, Black Five No. 44871 passed on route from Carnforth to Grosmont where the engine will be on loan for the season at the North York Moors Railway, and on Sat 15th No. 60103 *Flying Scotsman* drew the usual crowds as it went out on a test run before travelling down to London to haul a series of excursions out of Victoria and Paddington.

As I am writing this, No. 46115 *Scots Guardsman* has just passed on route to Hellifield where it will haul the first of this season’s “Dalesman” excursions over the Settle and Carlisle. Indeed, steam services on the latter have restarted with some gusto, and between now (20th May) and when this issue comes through your letter boxes at the start of June, there will have been a further seven such runs, from York, Leicester, Euston, Lancaster, Crewe and Liverpool.

Looking ahead into June and July this busy picture on the Settle and Carlisle line continues, with excursions on most Tuesdays and Thursdays plus the occasional Saturday. Whenever these are due to pick up their steam traction from

Hellifield, then it is likely that the engines will pass Clapham station as they move to take up their positions at the start and end of each run. The easiest way to find out what is running and when is currently the “Railadvent” website: [www.railadvent.co.uk/steam-locomotives-on-the-mainline](http://www.railadvent.co.uk/steam-locomotives-on-the-mainline).

Heritage lines are also beginning to reopen, but a couple of our local ones have been busy already, with film crews able to exploit the underused facilities. Filming for the next instalment of the popular *Mission Impossible* franchise has been underway on the North York Moors Railway, where a train roof fight has been staged. For this, a completely mocked up steam engine was used as a prop whilst the train was actually propelled from the rear using a diesel.

Nearer to home, the Railway Children have come back to the Keighley and Worth Valley Railway which hosted the original film back in 1970. The new film - *The Railway Children Return* - is a sequel to the original but set during the Second World War. Jenny Agutter even plays the grown up version of her original character Bobbie. The film is due to be released in April 2022.

Andy Scott

**You are invited!**

**Lambing Service**  
starting at  
Keasden New Burial Ground

**Sunday 27th June, 7.00pm**



A celebration of lambing and  
an opportunity to view the  
new burial ground being  
created adjacent to  
Keasden Church

**Refreshments will be provided**

## Bentham Community Primary School

**Is your child aged 3+? Are you looking for Nursery provision locally?**

Bentham CP School has a Nursery class for children aged 3+, led by a qualified teacher

15 hour Universal Funding available (9.00am-12.00noon every day)

30 hour funded places available (9.00am—3.00pm every day, option to extend to 3.30pm)

Transition to a Reception class in any school will be accommodated, including to Bentham CP School.

Come and visit us in action 015242 61412

Headteacher: Mrs Claire Pearson



# AIRE VALLEY *Glass*

PVC | Aluminium | Hardwood



A Family firm established over 35 years, we supply and install top quality windows and doors in PVC and Aluminium, as well as Composite Doors, Sliding Sash Windows, Bi-Fold Doors, Roofline & Conservatory Roofs

Bridge Road, Sutton-in-Craven  
Keighley BD20 7ES

**01535 634788**

[enquiries@airevalleyglass.co.uk](mailto:enquiries@airevalleyglass.co.uk)

Dalesview Business Centre  
Old Road, Clapham LA2 8JH

**015242 51705**

[www.airevalleyglass.co.uk](http://www.airevalleyglass.co.uk)



## Settle Pool - back in the swim



As the covid lockdown regulations are gradually eased, Settle Area Swimming Pool – the community pool which serves this part of the Dales – is increasing its number of weekly sessions. We are now also able to restart the popular Aqua Aerobics and Hydrolates sessions. However, sessions still need to be booked on-line in advance and there are strict regulations to ensure covid safety, such as the need to arrive wearing your swimwear under outer clothing and to wear a mask whilst in the entrance area.

Not surprisingly all sessions are proving popular so do visit the website: [www.settleswimmingpool.co.uk](http://www.settleswimmingpool.co.uk) and book your session well in advance.

Despite this increased usage, the number of swimmers allowed in the pool at any one time still remains severely limited and the costs of keeping the pool open are high. As a result, our fund raising efforts are more important than ever and of course we are extremely grateful for the donation from Clapham cum Newby Parish Council reported in the April newsletter.

The charity shop in Duke Street also continues to be a really important source of income to help keep the pool afloat – so to speak – so do call in when you are in the

town. We also continue to need more helpers, particularly for Sundays when we hope to open at a time when there are a lot of people around. If you are able to give a few hours on a regular basis – or even just cover occasionally as holiday relief – then do get in touch with:

Anne Galloway on [anne.gal@hotmail.com](mailto:anne.gal@hotmail.com)

Traditionally the pool's other important source of income was the paper recycling scheme. Sadly that had to close in March 2020 at the start of the first Covid lockdown and we have not been able to resume due mainly to a shortage of volunteers. If you are reasonably active, are able to give a few hours a week and want to find out more about what's involved please contact:

Ian Gray on [ianandmargaretgray@hotmail.com](mailto:ianandmargaretgray@hotmail.com)

Finally and most significantly we hope soon to be able to make an announcement on our ambitious plans to extend the pool, including revamped changing facilities and a new dry space.

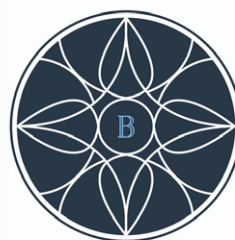
The above picture is an artist's impression of what we are hoping to achieve.

*Mike Smith*

## Thank you

The Friends of Clapham School charity held its final AGM in May and has now been dissolved as a charity. The Trustees would like to say a HUGE thank you to absolutely everyone in the village and beyond who has supported the charity over the years - it was a real powerhouse of fundraising! The Trustees are really pleased to have been able to make a final substantial donation to Clapham Play Park to support their fundraising drive for new play equipment. Thank you everyone.

*Zoe Richardson*



**BRAVE YOGA**  
Strong. Balanced. Brave.

*Yoga for every body...*  
**Offering classes 6  
days a week in  
Clapham and  
Settle. Outdoors,  
indoors, and  
online.**

[WWW.BRAVEYOGAYORKSHIRE.COM](http://WWW.BRAVEYOGAYORKSHIRE.COM)  
[YOGA@BRAVEENTERPRISE.COM](mailto:YOGA@BRAVEENTERPRISE.COM)

## Nature notes

Mistakes happen. Sometimes over and over again. And occasionally they happen so often that, in time, they stop being mistakes at all. Take, for example, those purple aprons worn by the volunteers in our community shop.

The word apron is derived from the Old French *naperon* – a small tablecloth. In English this eventually became *napron* but, at a time when the spoken word was much more prevalent than the written one, no one really knew whether they were wearing a *napron* or an apron and, as is so often the case, it was the mistake that endured.

By now you might well be wondering why on earth I'm waffling on about aprons when I'm supposed to be concentrating on the local flora and fauna. The fact is that my most fascinating wildlife encounters over the past month or so have been with creatures who have been similarly misnamed. The Old English word for a serpent – any serpent – was *nadder*. Now try telling someone you've just seen a nadder. It's not difficult to see how Britain's only venomous snake got its name.

Adders are relatively common in our part of the country. They like rough grassland, heath and moorland, and that striking zig-zag pattern offers ideal camouflage among fronds of dead bracken. It also helps if there are lots of sheltered open areas to bask in the morning sun and the odd tasty vole. That said, despite being surrounded by ideal adder real estate, many of us have spent a lot of time walking on the hills and moorland around Clapham without ever seeing one.

This year, though, has been a little bit different. I'm not entirely sure why but in recent weeks I've come across more of these fascinating vipers than I have ever done before. Perhaps it was all those frosty April nights followed by dry sunny mornings. Adders are ectothermic, which means that they lack any internal biological means of regulating their temperature: after a cold night they must re-charge their batteries by basking in the open. For them, sun-bathing is a matter of life and death. They are, quite literally, solar powered.

However, just as they need the sun to warm up, they need shelter and shade to cool down. This means that in the heat of the summer months (wishful thinking?) these shy reptiles are even more elusive. If you do come across one in June or July it's likely to be a pregnant female harnessing

the sun's energy to help the eggs inside her to develop. Like all vipers, she will give birth to live young that have hatched inside her, offering them a head-start and a much greater chance of survival.



A solar powered adder.  
Photo: Brian Christian

medical help in the unlikely event that you do get bitten, and to keep your dog on a lead if you think there might be adders about (ground-nesting birds will be much happier too!).



Goldfinch, siskins and sunflower hearts.  
Photo: Brian Christian

Closer to home, I wonder how many of you have been enjoying the sight of some particularly colourful spring-time visitors to your bird feeders recently? Goldfinches have been feasting on sunflower hearts throughout the winter but latterly they've faced some stiff competition. In April and May the local siskins must have found supplies of conifer seeds running short and it has been a real treat to see so many in our gardens. One of the smaller finches, the yellow/green siskin is easily identifiable – particularly the male with his jaunty black cap – and, if we are lucky, they might soon be accompanied by hungry little ones.

Thank you to all who have been in touch with interesting or unusual sightings. There were quite a few reports of swallows flying through in early April, but I think Simon Coultherd can claim to have spotted the first of them to settle back here on April 10th. Similarly, Tim Hutchinson noticed the first swifts passing overhead as early as April 25th but it wasn't until May 10th that they started swooping and screaming around the village in earnest. And the first calling cuckoo? I think that may have been on Newby Moor on *Star Wars Day*, May the fourth. We also have the first fledglings of the year popping up all over the village right now so do keep an eye out for them and let me know what you see.

Brian Christian

Colin Price got in touch to report his first sighting of a swallow on 6th April, whilst down by the station, the rookery has grown quite a bit larger this year and now sports 47 nests. Andy (Ed.)